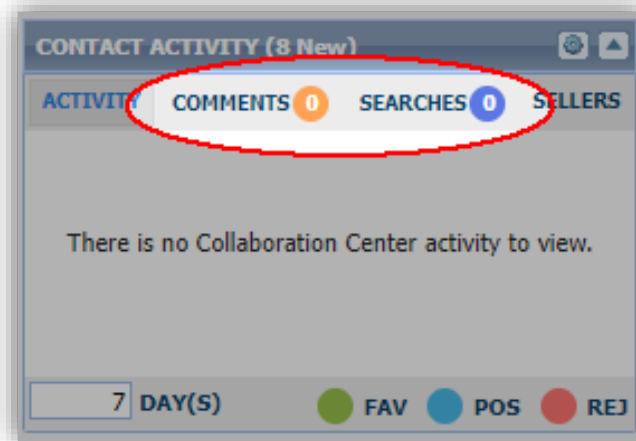


## 5.87 Release Enhancements (Feb 2022)

### Paragon MLS

- **Updated Colors on Contact Activity Widget**

We updated the colors for Comments and Searches at the top of the Contact Activity widget on the Paragon Pro home screen to match the colors used in Paragon Connect.

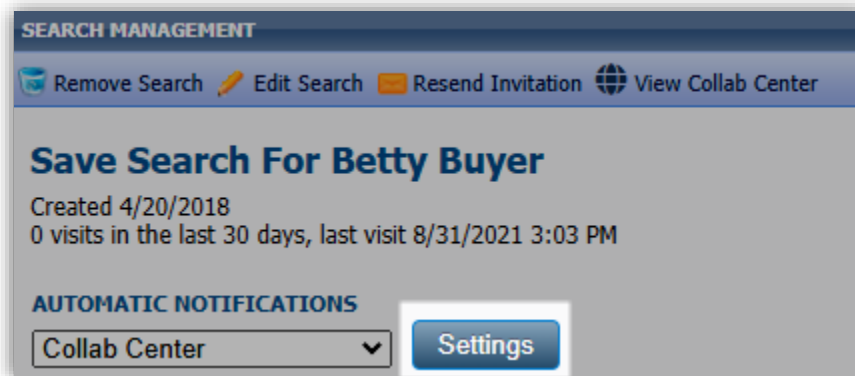


- **Forced Tax Autofill by Board**

Forced Tax Autofill is a feature that redirects users to the tax autofill screen when a user adds a new listing. This feature was using a global MLS setting so if it was ON it was on for everyone in the MLS. This became an issue recently for a customer with multiple boards where one board has tax autofill and the others do not. To resolve this, we have enhanced the configuration to be at the board level so that it only applies to members of a board where it is required.

- **Default Options for Collaboration Center Emails**

We cleaned up the help text for attaching the email Message Body to Collaboration Center notifications and fixed an issue where the selected message body would display on the initial Welcome email, but was missing on subsequent notification emails.



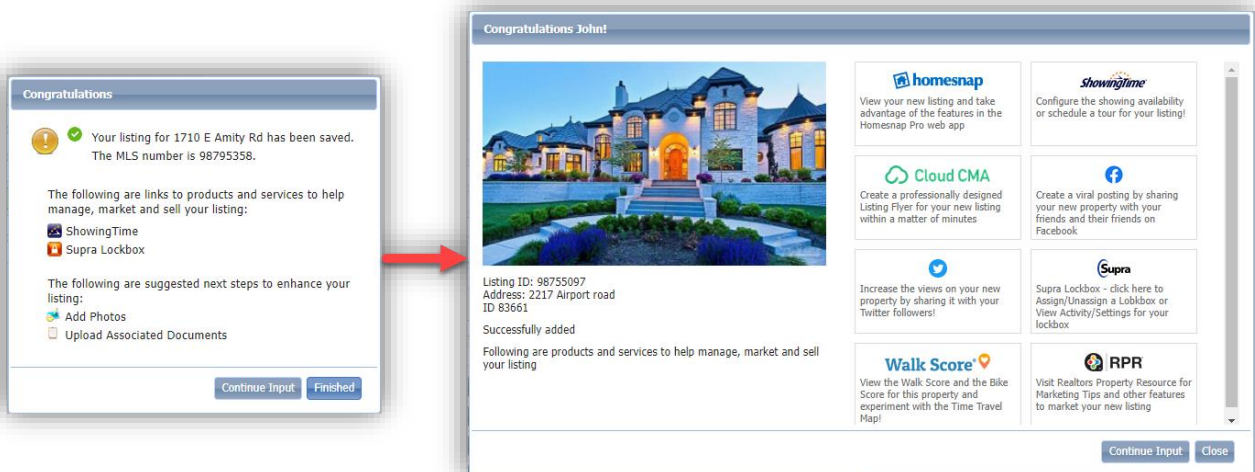
## Advanced Email Options

### CLIENT EMAIL OPTIONS

Select a Message Body to include in your Collab Center Client email notifications. [Message Body](#)

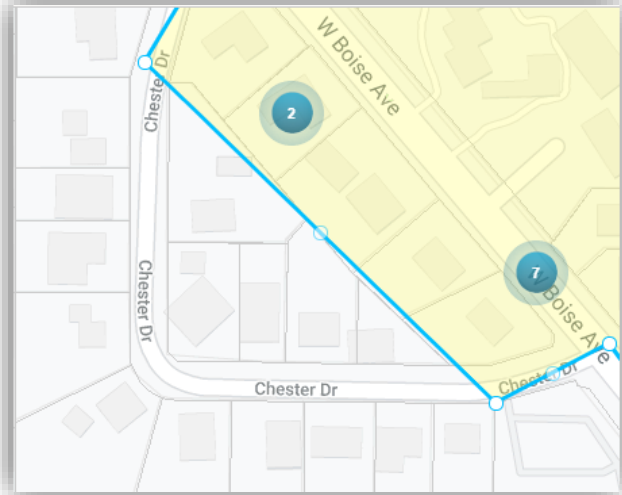
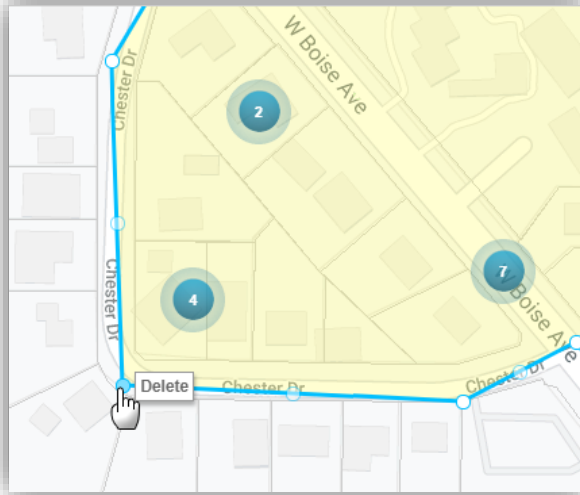
- **Enhanced Listing Congratulations Modal in Listing Input**

The Listing Congratulations Modal has been enhanced to give your members more information about the property and the integrated services. This includes displaying the primary photo of the property, more space for the third-party vendor's logo and up to 100 characters for the description or call-to-action text. Paragon also has the ability to add a custom sort to the integrations so if you have a vendor that you want promoted to your membership, it can be moved to the top of the list.



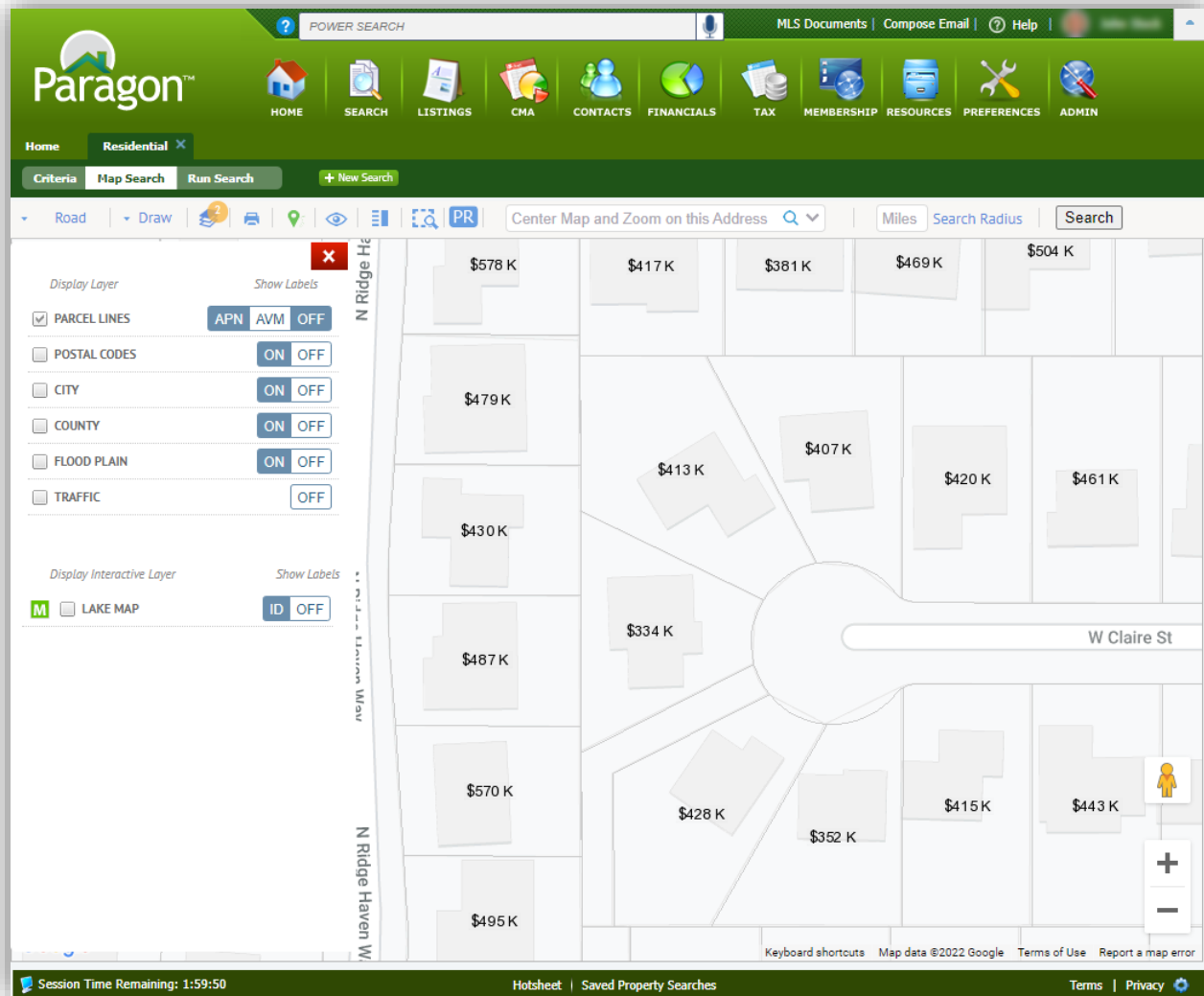
- **Ability to delete a point in Polygon Map Drawing Tool**

A new feature was added to the Polygon drawing tool to allow users to delete end points. Previously, if a user wanted to modify their polygon, they had to either move the respective points to reshape the drawing OR start over because moving all or some of the points was more work. With this enhancement, users can right-click on an endpoint and a “Delete” option will pop up. Selecting the option removes the point and the drawing updates based on the deleted point.



- **Mapping – AVM Data on Parcels**

Paragon Map Search has been enhanced to support AVM labels on parcels bringing Paragon to par with some of the top real estate platforms including our own partner, Homesnap. Agents will no longer have to click on the parcel to see the AVM. The labels will display by default for customers that have the BK EZ Value AVM enabled. Agents can toggle them ON/OFF from the layers panel or set their own default from User Preferences > Search Options > Parcel Layer.

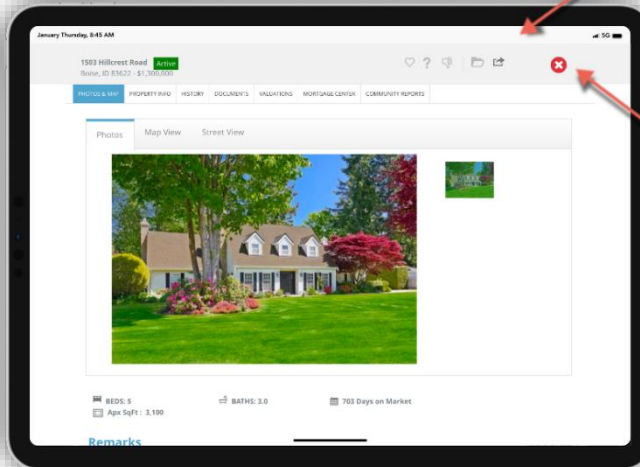


## Collaboration Center

- Detail Report Updates**

A few minor changes were made to the top header section of the Collaboration Center detail report. The header's height was reduced, icons grouped and aligned to the right. The close button was updated, and the price was grouped with the address information.

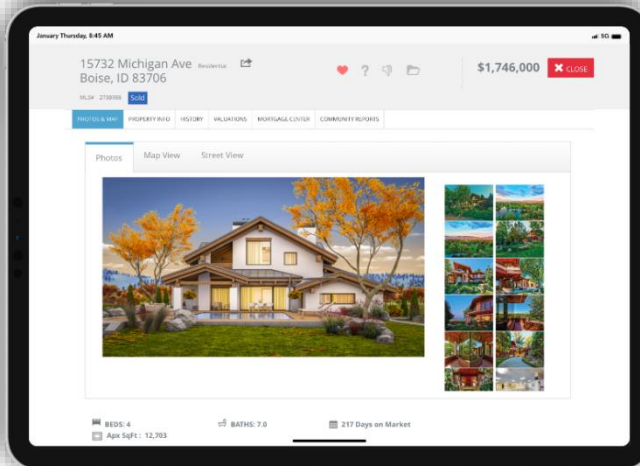
**Reduced Header**  
Top header has been reduced in size to allow more content to be viewable



**Actions Grouped**  
All actions grouped together and moved to the right of the header.

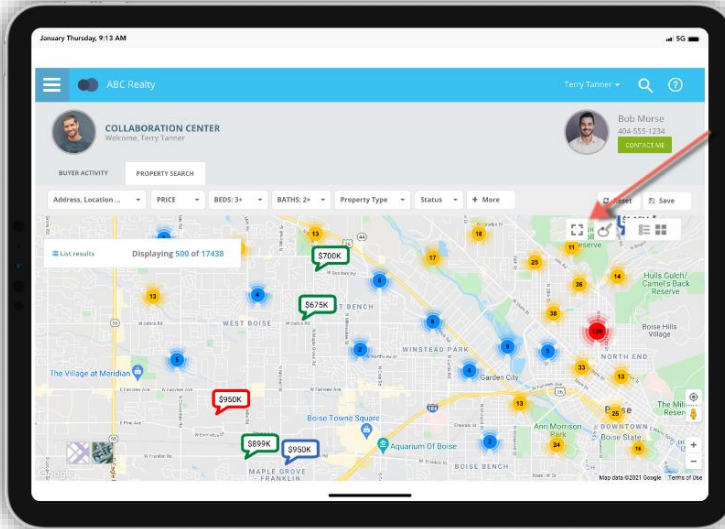
**Close Icon**  
Updated close icon. Keeps the close options consistent.

**Previous Header**  
This was the previous header. You can view the changes that were made.



- **Expanded Full Screen**

The search feature in Collaboration Center was recently moved into one of the primary tabs on the dashboard. A new expand option is now available for those who want to search in full screen mode. Once in full screen mode, the expand icon changes to a reduce icon that when activated takes you back to the default layout.

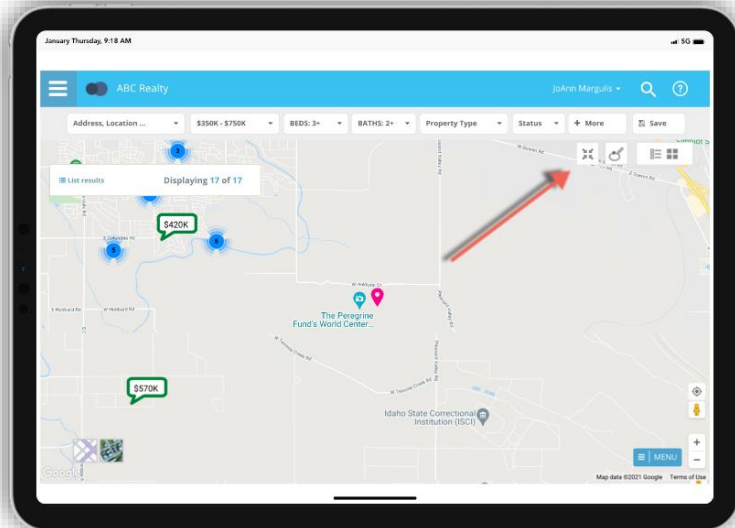


**Expand Search**

An expand option is now available that allows your prospective buyers to take the property search to full screen.

**Reduce Icon**

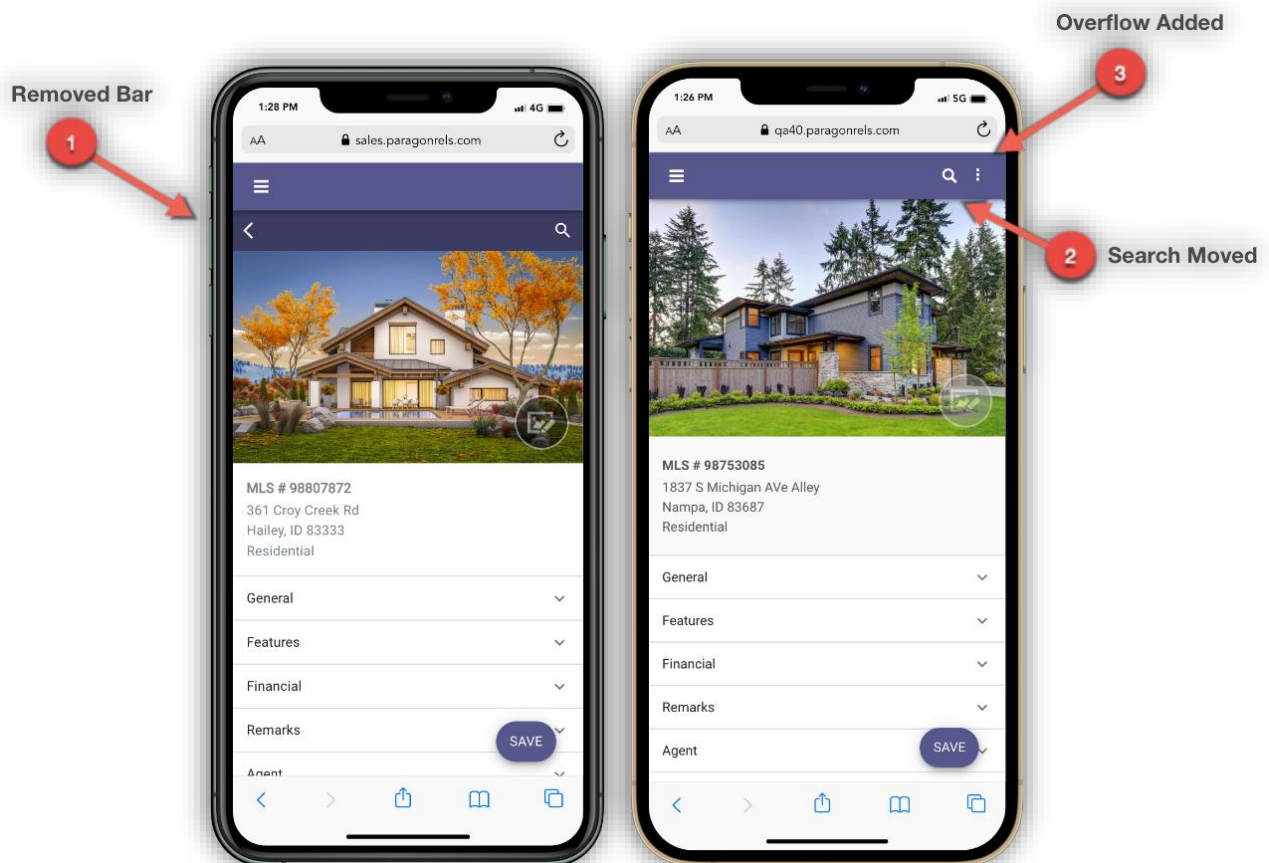
Once in full screen mode, you can click or tap on the reduce icon and it will return you to the default tab layout.



## Paragon Connect

- Listing Edit Updates**

A few exciting changes are coming to full listing edit. The first, was to remove the secondary navigation bar located below the top app bar. This module now allows you to use your browser controls to move back, forward, or even refresh. The second, was to move the search feature to the top app bar. This will now utilize our standard search component. The final update made to this module is the addition of an overflow menu (three dots). This will house all our future LIM features. Examples: change geocode, embed videos, tour and open house, etc.



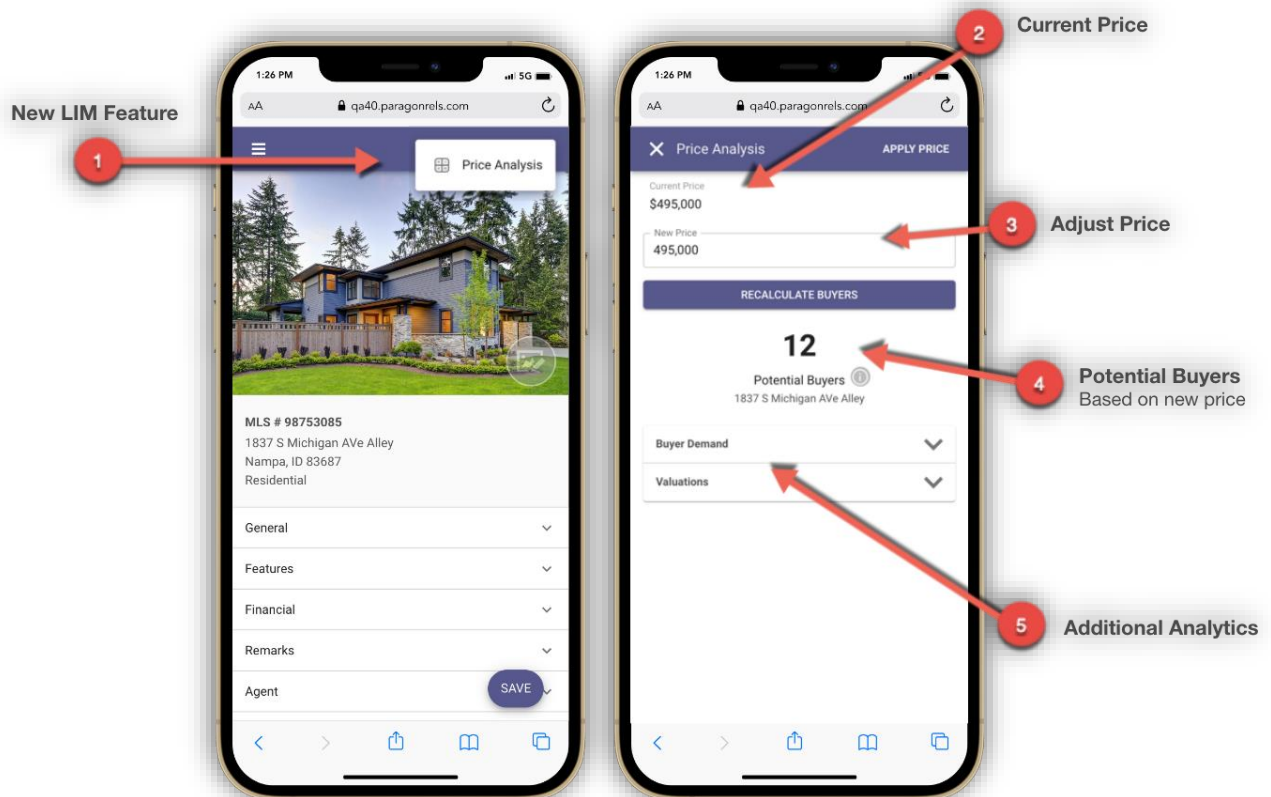


- **Price Analysis**

The Price Analysis feature that was introduced in 5.86 to Paragon Professional, it is now available inside of Paragon Connect. It can be used by agents to determine pricing by viewing the Potential Buyers and any available AVMs if enabled. The feature can be accessed from the overflow icon in the top app bar of the full listing edit.

The Potential Buyers are based on current Paragon and Paragon Connect saved searches that would include the property and are assigned to clients who are prospecting, i.e., they are set up for auto-notifications.

Armed with the Potential Buyers and the AVMs, agents can enter a New Price into the interactive widget and click the Recalculate Buyers to determine the effective change on potential buyers.

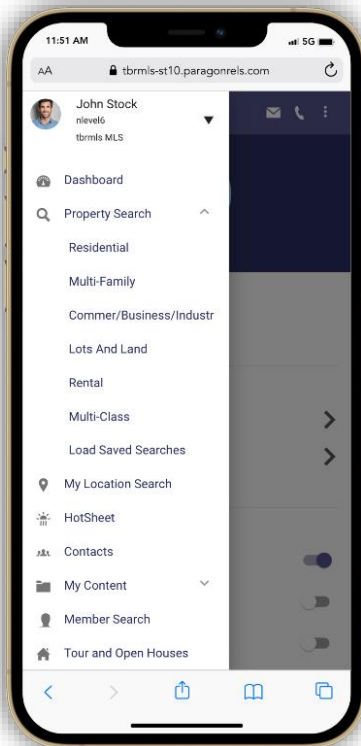




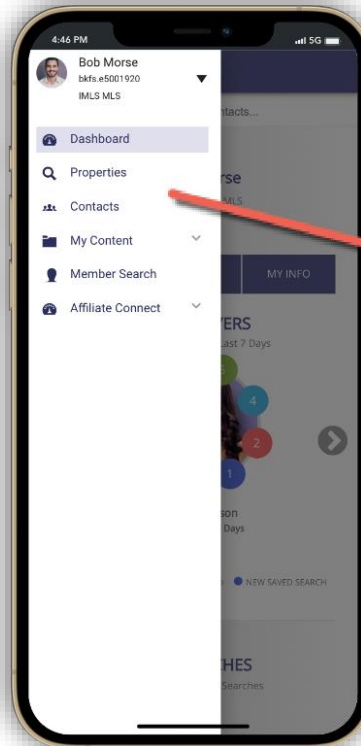
- **Menu Updates**

To prepare for features in Paragon Connect, Black Knight has made some adjustments to the overall left navigation. The tree structure found in the left navigation today is a frowned upon solution for mobile applications. To accommodate for more menu items, the tree structure was removed in favor of a new top-level page. This allows us to keep the primary navigation simple but allows for room to expand the additional content on the top-level page.

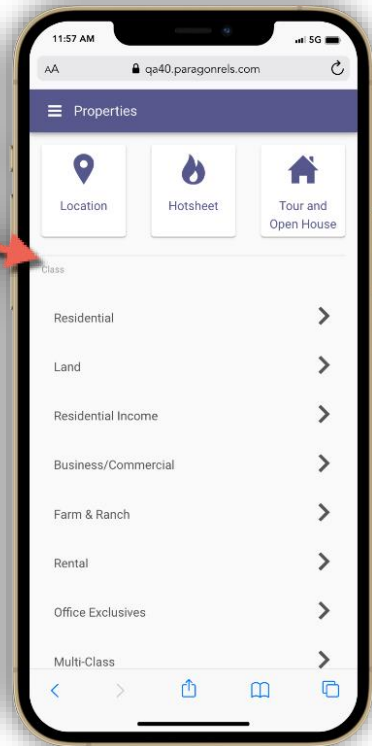
Black Knight also consolidated all the different search options available in Paragon Connect into one single menu called "Properties." This means you have a single location now for Class based searches, location search, Hotsheet, tour and open house, etc.



Old Menu



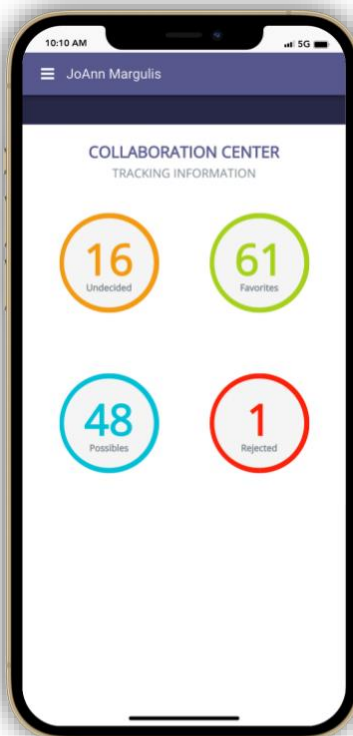
New Menu



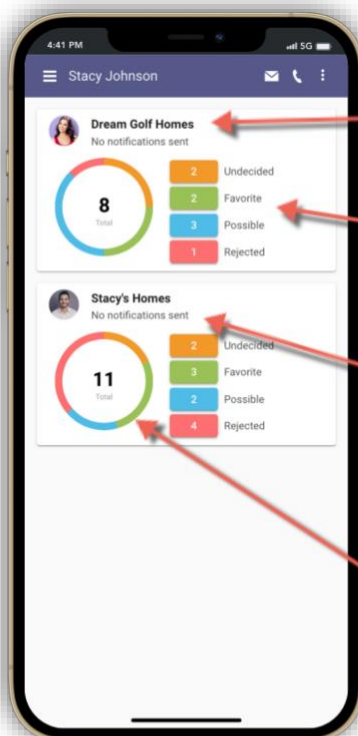
- **Contact Buyer Activity**

The buyer section within the contact viewer is getting a major upgrade. Prior to this release, the buyer activity would take you to four circles where you would find the total number of undecideds, favorites, possible, and rejected listings for a specific contact. This was a sum of all searches and archived matches, and there was no option to filter these by saved searches. Now you will see each search is broken down into its own card. You can see the total number of listings, plus the different categories for each search. You can see who created the search (Agent vs Client). When the last notification was sent. You can also click on each category to see the results within each card.

This is just the beginning. Soon, you will be able to modify these searches, update the notification settings, and create a new search from this location. Below is a breakdown of a few new features.



Old Format



New Format

**Name of Search and Creator**

The agent photo represents that the saved search was created by the agent. If you see a client photo, it represents a search created by the contact. Also the name of the search is displayed next to the photo.

**Category**

Each search is broken down to display each category of undecided, favorite, possible, and rejected listings. You can click or tap on each category to view those listings.

**Last Notification**

The last notification sent to your contact will be represented here. In this example, the notification was just set up but it will display the date of any notification updates sent to your client.

**The Ring**

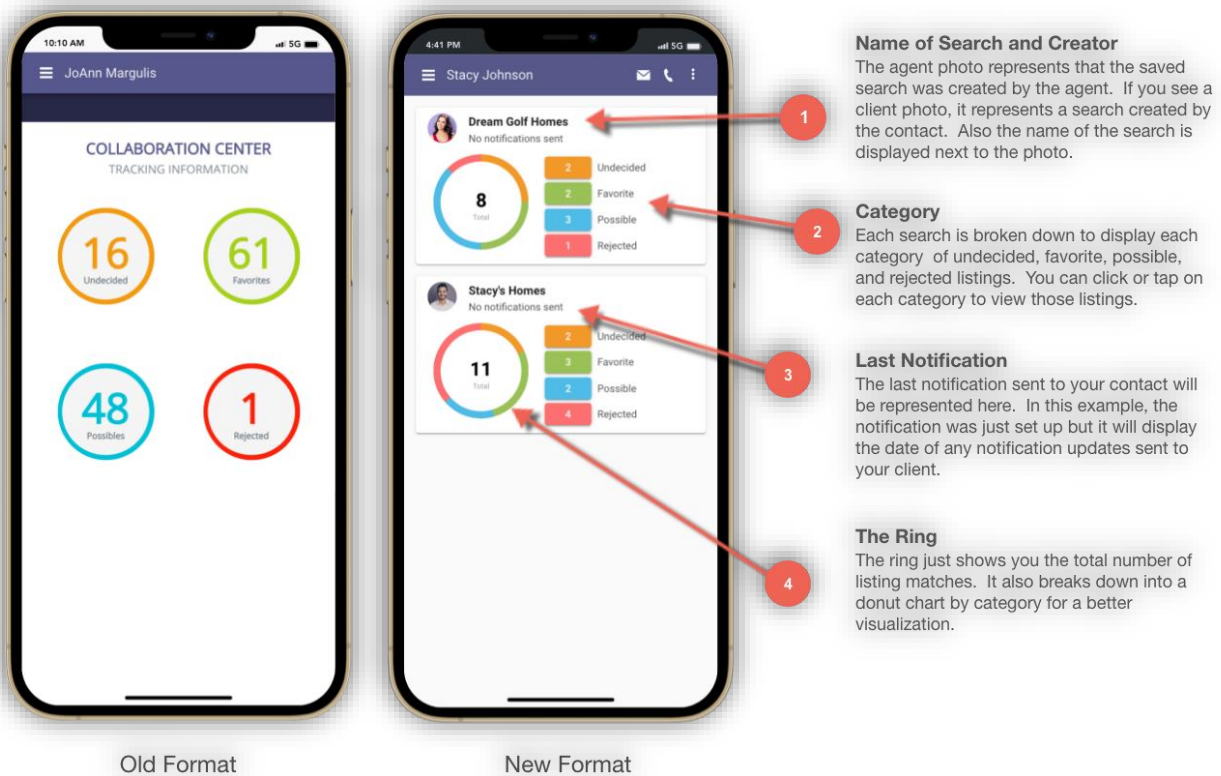
The ring just shows you the total number of listing matches. It also breaks down into a donut chart by category for a better visualization.

- **Contact Buyer Activity Updates**

There are additional features included with the buyer activity that are worth noting. Notifications that are disabled are displayed on page, but the counts and links are disabled. In a future release, end users will be able to enable/disable the from Paragon Connect.

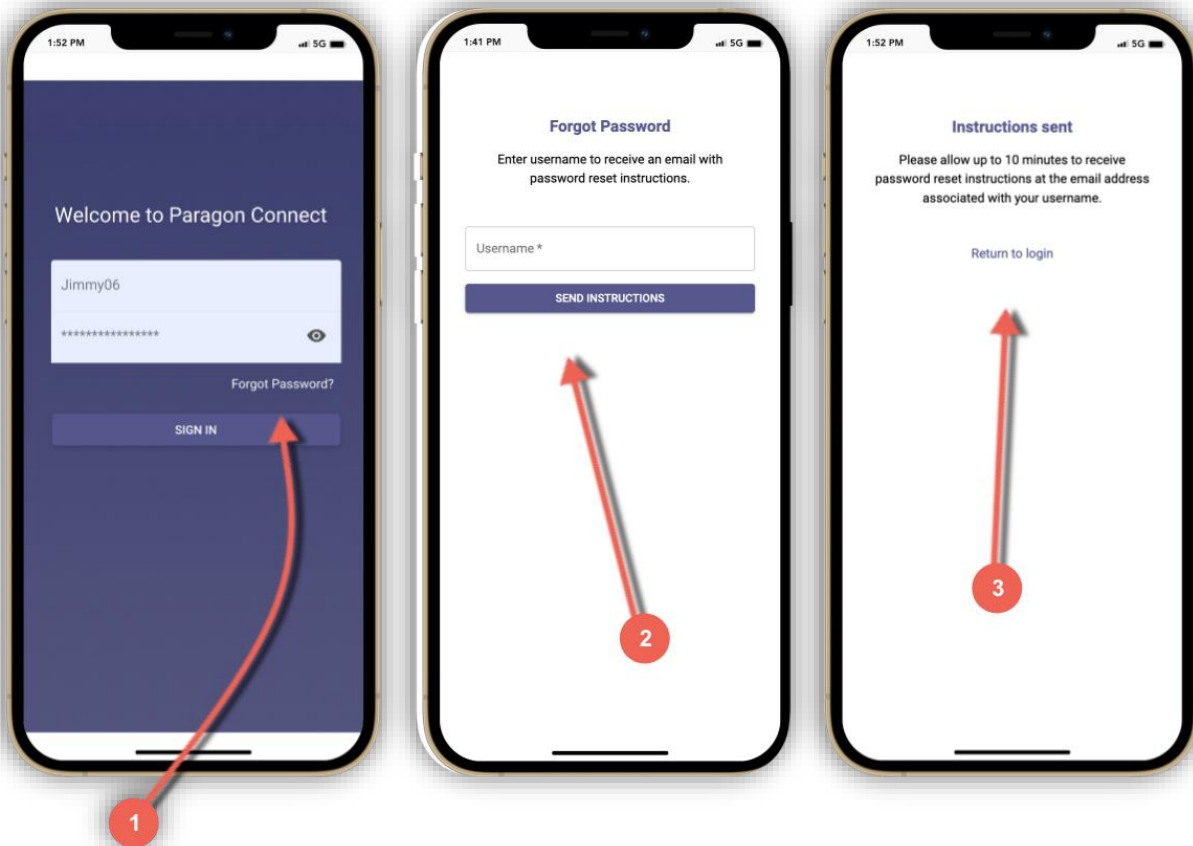
Agent Picks or (Known as Agent Recommend in Paragon Professional) are also seen on the buyer activity. This works just like a search card only these are listings you have recommended to your clients.

Finally, the buyer activity section will display a card for any legacy email notifications setup. There are not links or actions on this card other than to inform you that the search and notification is in use.



- **Forgot Password**

Paragon Connect has added a “Forgot Password” feature that allows you to reset your password. This may or may not be available depending on your organization’s rules and regulations. However, if you are allowed to use this functionality, you will simply enter your username and an email with reset instructions will be sent to the email address associated with the username entered. That email will contain a link that will take you to a page where you can reset your password.



**Forgot Password**

If visible, it will allow you to reset your password used to login to Paragon Connect.

**Username**

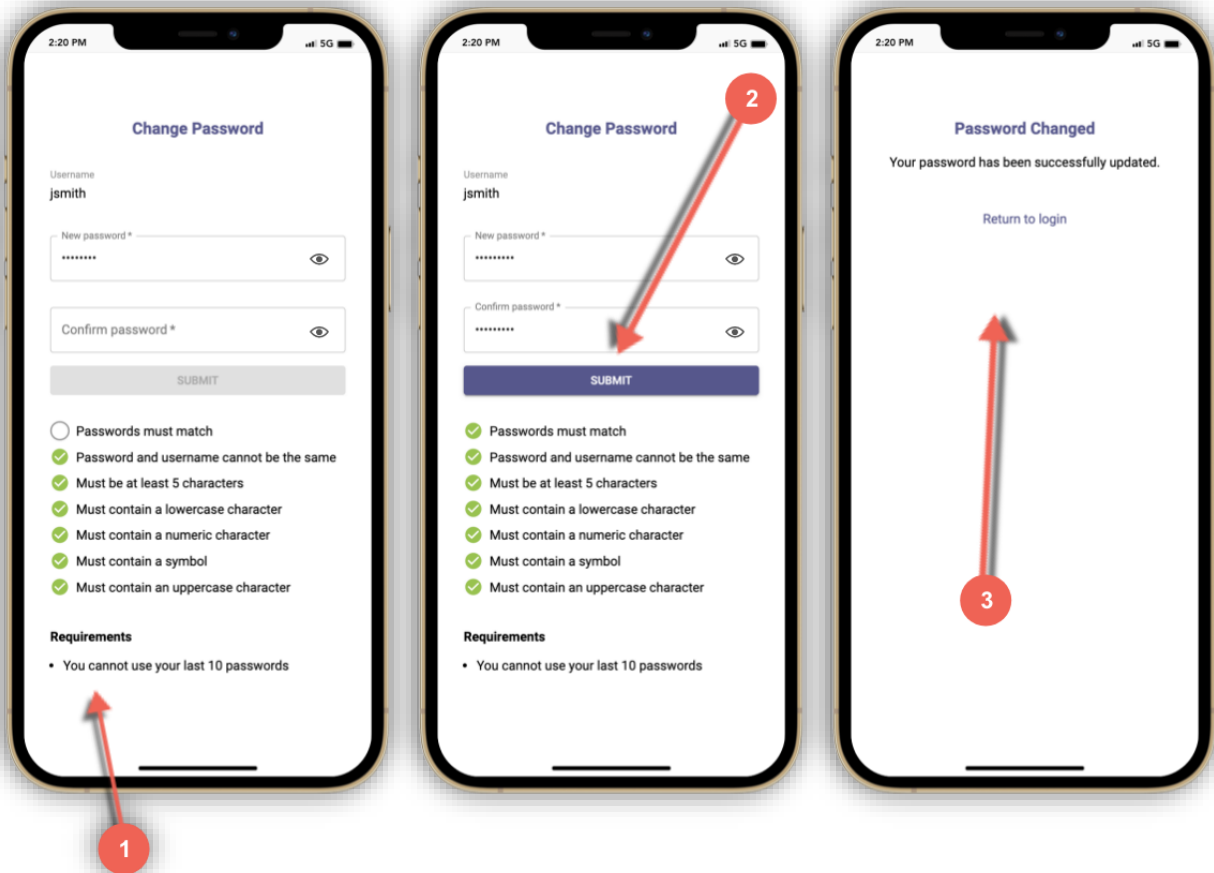
Provide your username used in the Paragon system and tap on the send instructions button.

**Instructions**

An email will be sent to the email address on file for that username. Link will have reset instructions.

- **Change Password**

Whether you forgot or the application forces you to change your password, Paragon Connect has you covered. This may or may not be available depending on your organization's rules and regulations. There are many different rules when it comes to forcing strong passwords. Paragon is configurable to allow your organization to choose from a variety of different password rules. Examples includes at least one capital letter, special character, numeric character, capitalization, and more. Once you pass all the rules and requirements, you will be able to change your password.



**Rules & Requirements**

This is just an example of all of the rules that could be enabled for your organization. As you type your new password the system automatically checks to see if you have met all of the requirements.

**Green to Go**

Once all requirements are green, the submit button will be enable.

**Success**

If everything passes you will get a confirmation page that your password has been successfully changed.