

Paragon Enhancements Coming August 14, 2019

Quick Summary of the items

Quick Action Buttons Added to Quick Search Field Customization

In the last release we added some additional saving options to search to help users perform various saving functions quicker and more efficiently. In this release we've brought that functionality to Quick Search.

HTML 5 Notifications for Session Expiration

Paragon only displayed a warning that your session is about to expire with a minute remaining. If the user is on another browser tab, has their browser minimized, or is otherwise distracted this is easy to miss and unsaved work will be lost. To help prevent this, we are adding push notifications to Paragon.

Paragon Enhancements Coming August 14, 2019

Listing Activity Report

The listing activity report has been updated to track listing activity data for the life of the listing from this release forward. Adjustment Values for CMA Comparable Reports

The addition of the adjustment value on the Summary of Adjustments and CMA Comp Report Horizontal allows the user to see how the adjustment value was derived. This is especially useful if using calculated adjustments.

Updated Map Option Descriptions

The preference map option descriptions for custom map address and zoom level, boundary by default, and zoom to fit have been improved to offer users a better explanation of these options.

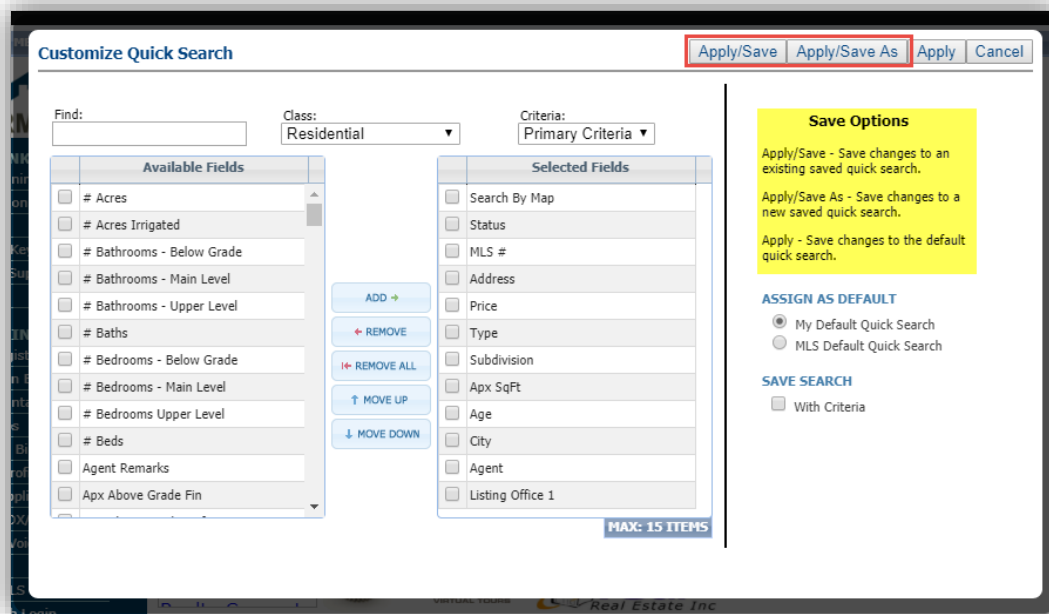
Interactive Map Layers

Interactive Map layers are here! Users can create their own shapes and save them as a layer which can then be used as part of search criteria.

Paragon Enhancements Coming August 14, 2019

Quick Action Buttons Added to Quick Search Field Customization

The Quick Search customization modal has been modified so that the user can apply their changes and save a search with one click. They can now choose to modify an existing search (apply/save), create a new search (apply/save as), or apply to the current form without saving (apply).



The new saving methods are now available in quick search

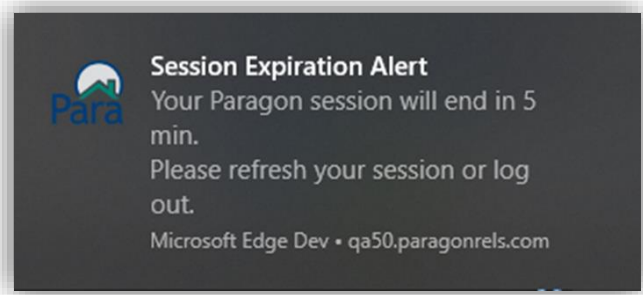
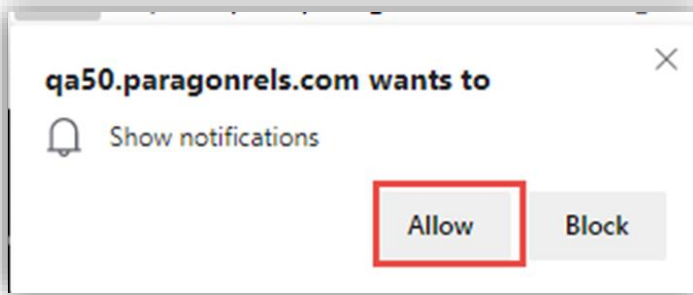
HTML 5 Notifications for Session Expiration

Action Item: Ensure membership knows they must actively allow this feature via their browser

To enable the push notifications the user must agree to allow Paragon to show notifications. These settings can be changed later in the browser settings if necessary.

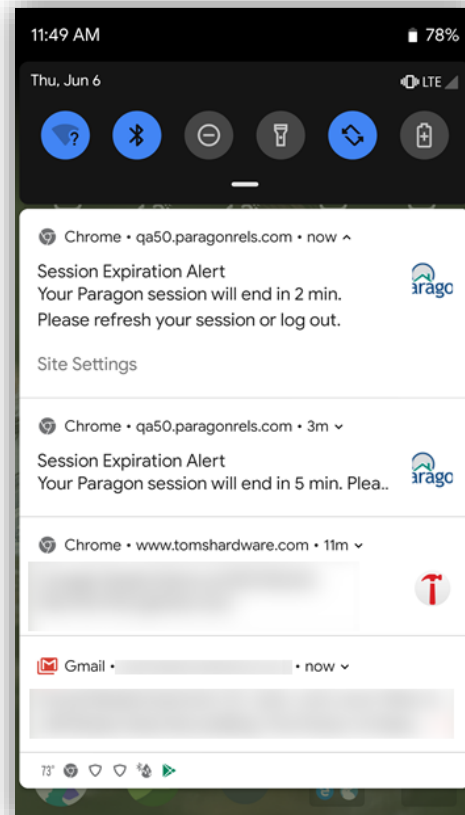
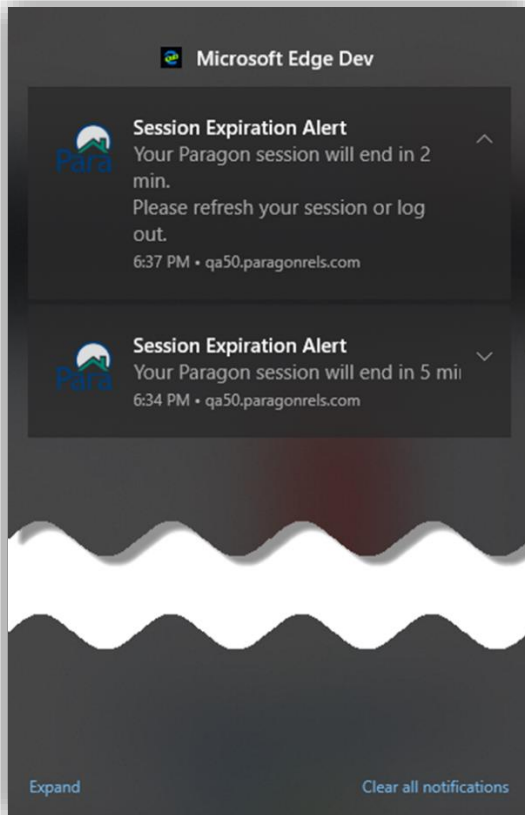
- The push notifications work in the following operating systems:
 - Windows
 - MacOS
 - Android
- The push notifications work in the following browsers:
 - Edge (Classic and Chromium versions)
 - Chrome
 - Firefox

Paragon Enhancements Coming August 14, 2019



Left: Users must click to allow notifications to be sent. Right: Example of the notification appearing in the OS notification tray

Below: Additional OS notification examples



Paragon Enhancements Coming August 14, 2019

Listing Activity Report

The listing activity report has been updated to track listing activity data for the life of the listing (up from the previous 120 day limit) from this release forward. Previously pruned data cannot be recovered.

View Activity Report [Cancel]

ACTIVITY REPORT - MLS#98729932 - 199 N CAPITOL BLVD

Print E-mail Report Definitions

MLS #	98729932	Asking Price	\$550,000
Address	199 N Capitol Blvd	Status	Active
Unit #	806	Class	Residential
City	Boise	Type	Condo
State	ID	Area	Boise North - 0100
Zip	83702		

Listing Statistics

Matched Saved Searches	131	Total Hits	1
Matched Contacts	135	Agent Hits	1
Property Details Viewed	1	Unique Agent Hits	1
Views from Email	0	Client Hits	0
Favorite/Possible/Cart	0	Unique Client Hits	0
Emailed from System	0		

Adjustment Values for CMA Comparable Reports

Action Item: N/A

The addition of the adjustment value on the Summary of Adjustments and CMA Comp Report Horizontal allows the end user to see how the adjustment value was derived. This is especially useful if using calculated adjustments.

Address	5365 W Piaffe St
MLS #	98723569
Price	\$514,900
Adjusted Price	\$516,505

Description	Adj Value	Adjustment
# Beds	\$1,000	+\$1,000
Apx Fin SQFT	\$85	+\$1,105
Cabana	\$500	-\$500

Address	4014 W Farm View Dr
MLS #	98680587
Price	\$503,756
Adjusted Price	\$504,256

Description	Adj Value	Adjustment
Built-in BBQ	\$1,000	+\$1,000
Cabana	\$500	-\$500

Address	6255 N Hillsboro Place
MLS #	98688413
Price	\$509,900
Adjusted Price	\$507,900

Description	Adj Value	Adjustment
Built-in BBQ	\$1,000	+\$1,000
Cabana	\$500	-\$500
# Baths	\$2,500	-\$2,500

Area	Eagle - 0900	Price Per SQFT	\$203.92
Type	Single Family	Listing Date	3/31/2019
Status	Active	Closing Date	
Days On Market	92		

Adj Values: Built-in BBQ \$0, # Beds \$1,000, Apx Fin SQFT \$85, Cabana \$500
Adjustments: Built-in BBQ \$0, # Beds +\$1,000, Apx Fin SQFT +\$1,105, Cabana -\$500

MLS #	98723569
Address	5365 W Piaffe St
Price	\$514,900
Adj Price	\$516,505

Area	Boise NW - 0800	Price Per SQFT	\$198.49
Type	Single Family	Listing Date	1/25/2018
Status	Sold	Closing Date	8/31/2018
Days On Market	0		

Adj Values: Built-in BBQ \$1,000, Cabana \$500
Adjustments: Built-in BBQ +\$1,000, Cabana -\$500

MLS #	98680587
Address	4014 W Farm View Dr
Price	\$503,756
Adj Price	\$504,256

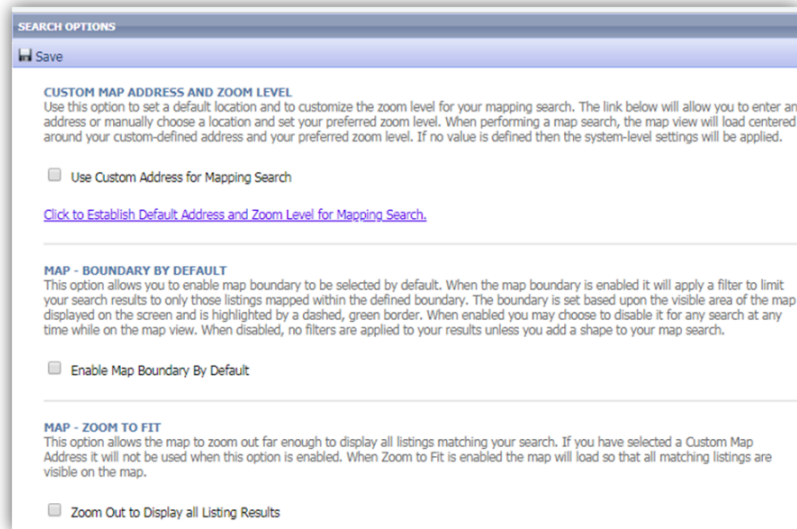
Left: CMA Summary of Adjustments Report. Above: CMA Comp Report, Horizontal

Paragon Enhancements Coming August 14, 2019

Updated Map Option Descriptions

Descriptive text was updated in Preferences System > Search Options for the following options:

- Custom Map Address and Zoom Level;
- Map – Boundary by Default;
- Map – Zoom to Fit.



Interactive Map Layers

MAP LAYERS ARE HERE!

We are excited to a roll out this enhancement that has been on so many users' wish lists. You can now create custom map layers, draw shapes, and then use those shapes as part of search criteria.

Get Started: How to Access Map Layers

To open the map layers administrative panel go to: preferences > interactive map layers (Figure 1).

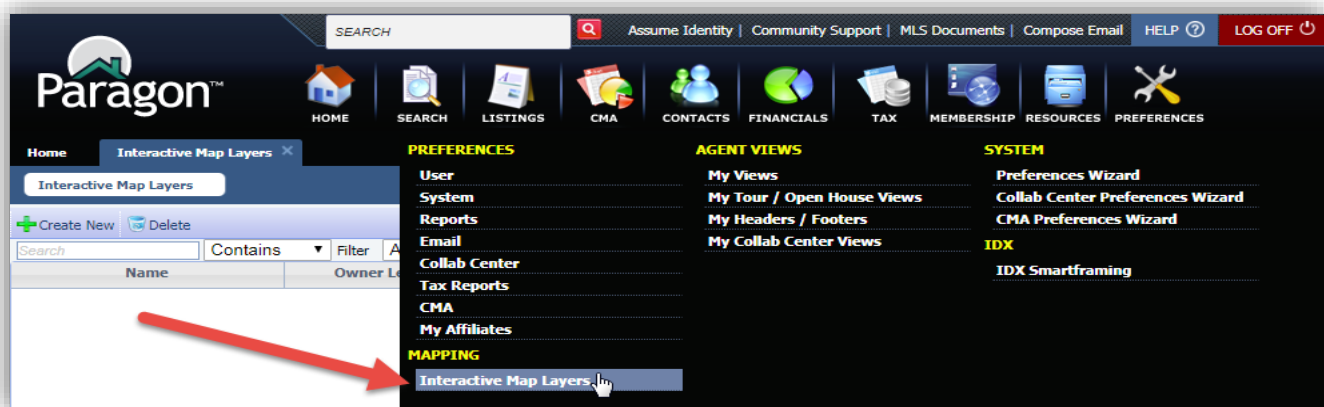


Figure 1

Paragon Enhancements Coming August 14, 2019

Get Started: Add a Layer

To start, you first need to create a layer. To do this, click the create new button. This will open the add layers tab. Name the layer, select an owner level, and then click save (Figure 2).

The screenshot shows a web interface for adding a new layer. At the top, there's a navigation bar with 'Home' and 'Interactive Map Layers'. Below that, a sub-header says 'Interactive Map Layers' with an 'Add' button. The main form area has a 'Name' input field containing 'My Areas' and an 'Owner Level' dropdown menu currently set to 'Agent'. There are 'Save' and 'Cancel' buttons at the top of the form area.

Figure 2

Get Started: Open Layer

Once you've created the layer, you will need to open it in order to add shapes. Click on the name of the layer to open it (Figure 3).

The screenshot shows a web interface for managing layers. At the top, there's a navigation bar with 'Home' and 'Interactive Map Layers'. Below that, a sub-header says 'Interactive Map Layers' with a close button. There are 'Create New' and 'Delete' buttons. Below these are search and filter options. The main part of the interface is a table listing the layers.

Name	Owner Level	Settings
Boise Regional Layers	Board	Settings
My Areas	Agent	Settings

Figure 3

Get Started: Add Shapes

Once the map is open, click the 'Draw Polygon' button and then use your mouse to draw the desired shape on the map. Once you have drawn the shape, name the shape, assign a color, and save. Repeat this process to draw additional shapes on your map layer (Figure 4).

To edit an existing shape, click on it, then use the handles, which appear as white circles, to adjust the shape. Once completed, click save.

Paragon Enhancements Coming August 14, 2019

To delete an existing shape, click on it, then press the delete key.

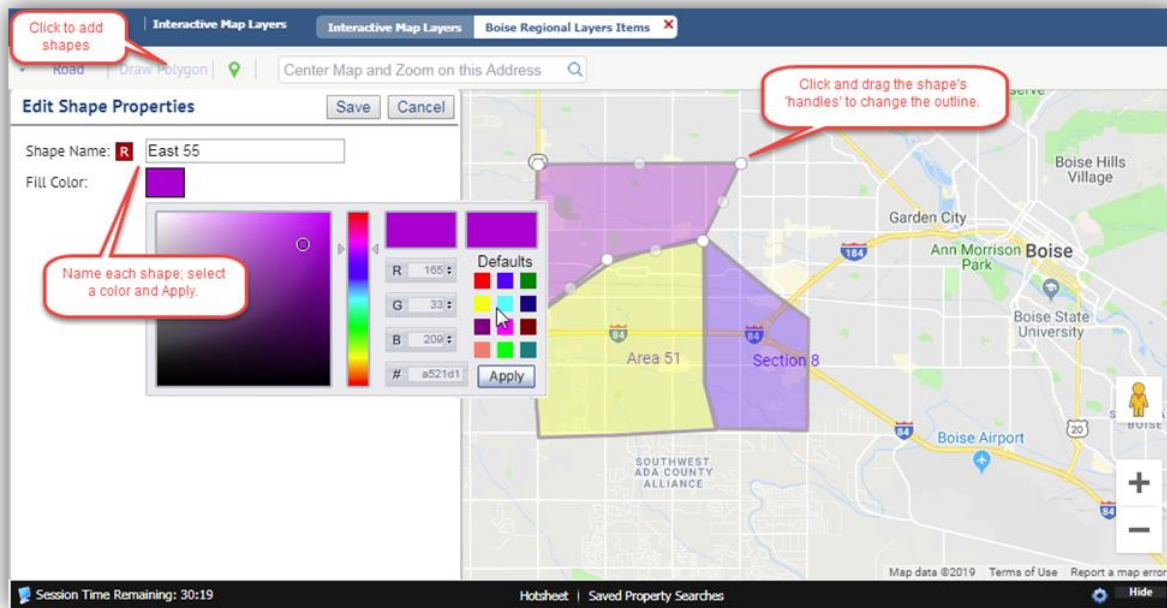


Figure 4

Using Layers: Search

Interactive map layers are available in any search module where the map control field or map search tab is available.

To use, open the map, then click the layers icon in the map toolbar. This will open the layers panel. Interactive layers will display at the bottom of the panel. Layers will appear sorted first by type (Agent, Office, Board, MLS), then alphanumerically by name (Figure 5).

Enable an Interactive Layer by ticking the checkbox to the left of the name. Important, only one Interactive Layer can be active at a time (Figure 6).

Once you have enabled a layer, click on any shape in the layer to add it to your search criteria. Repeat this process for any additional shapes you wish to include (Figure 6).

Paragon Enhancements Coming August 14, 2019

To remove a shape, deselect it in the layers panel (Figure 6), or delete it from the map control field in the criteria tab (Figure 7).

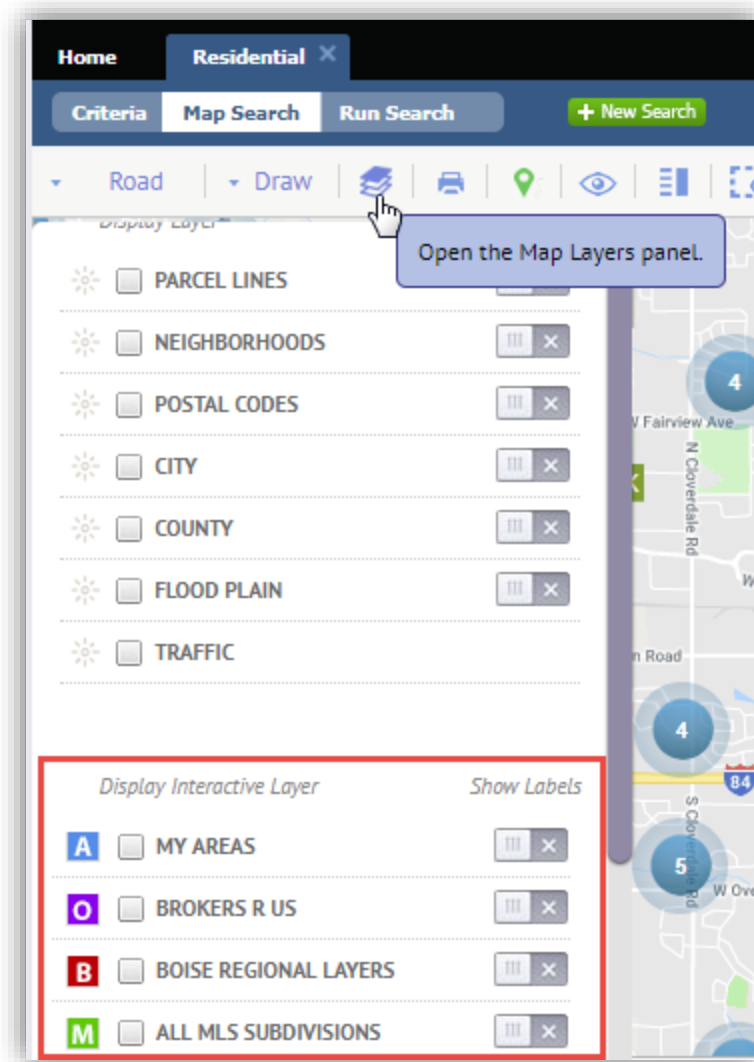


Figure 5

Paragon Enhancements Coming August 14, 2019

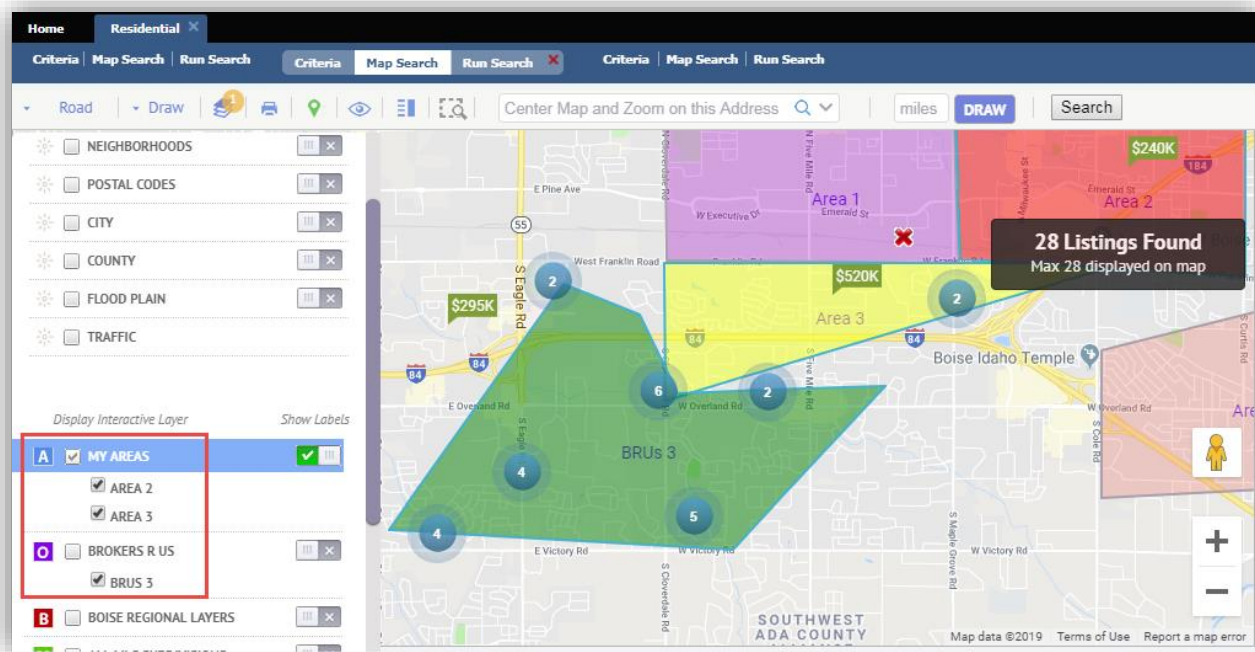


Figure 6

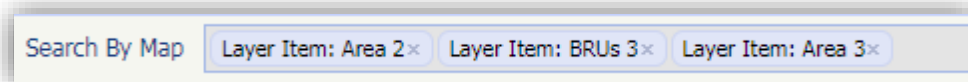


Figure 7

FAQ

Can I add additional shapes when performing a search?

Yes, you can draw additional shapes with the map tools while you have an interactive layer enabled.

Do interactive layer shapes count towards the maximum amount of shapes?

No, interactive layers shapes do not count towards this limit.

Can I include shapes from different interactive layers?

Yes. You can add a shape from a layer to your criteria, then switch to a different interactive layer to add additional shapes to your criteria.

What happens to my saved search if a layer or shape is changed?

Your search results will be updated to reflect the changes to that shape/layer. Any notifications for that search will only be sent for new listings when they meet the notification criteria of the search.

Can I import a map layer and make it interactive? Are the old map layers interactive, too?

This is a planned future enhancement.