



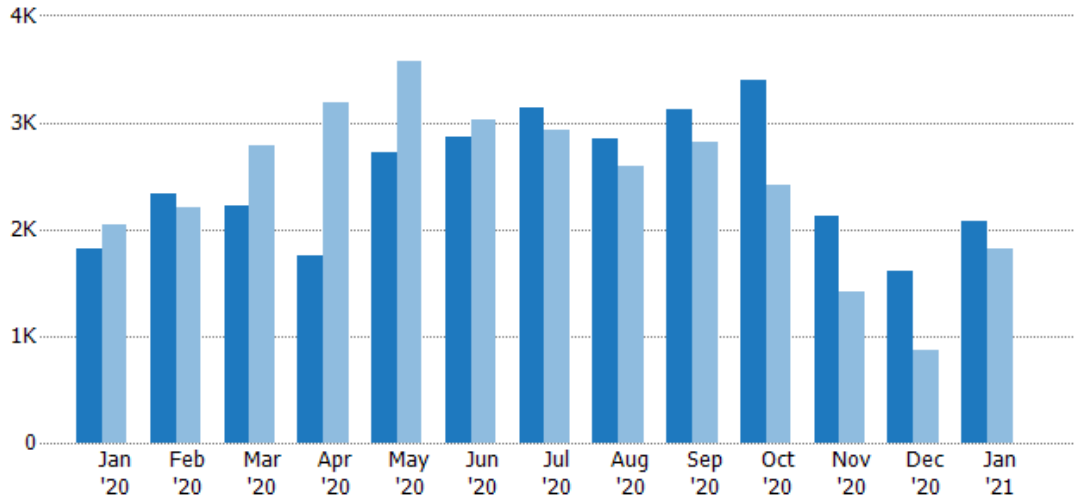
## New Listings

The number of new residential listings that were added each month.

### Filters Used

MLS: Contra Costa Association of REALTORS®, Bay East Association of REALTORS®, and bridgeMLS  
 County: Alameda County, California, Contra Costa County, California

| Month/Year | Count | % Chg. |
|------------|-------|--------|
| Jan '21    | 2.07K | 14.4%  |
| Jan '20    | 1.81K | -11.3% |
| Jan '19    | 2.04K | -0.9%  |



|                                |       |       |       |       |       |       |       |       |       |       |       |       |       |
|--------------------------------|-------|-------|-------|-------|-------|-------|-------|-------|-------|-------|-------|-------|-------|
| Current Year                   | 1.81K | 2.34K | 2.23K | 1.76K | 2.72K | 2.86K | 3.14K | 2.85K | 3.12K | 3.39K | 2.12K | 1.61K | 2.07K |
| Prior Year                     | 2.04K | 2.21K | 2.79K | 3.19K | 3.58K | 3.02K | 2.93K | 2.59K | 2.81K | 2.42K | 1.42K | 866   | 1.81K |
| Percent Change from Prior Year | -11%  | 6%    | -20%  | -45%  | -24%  | -5%   | 7%    | 10%   | 11%   | 40%   | 49%   | 86%   | 14%   |

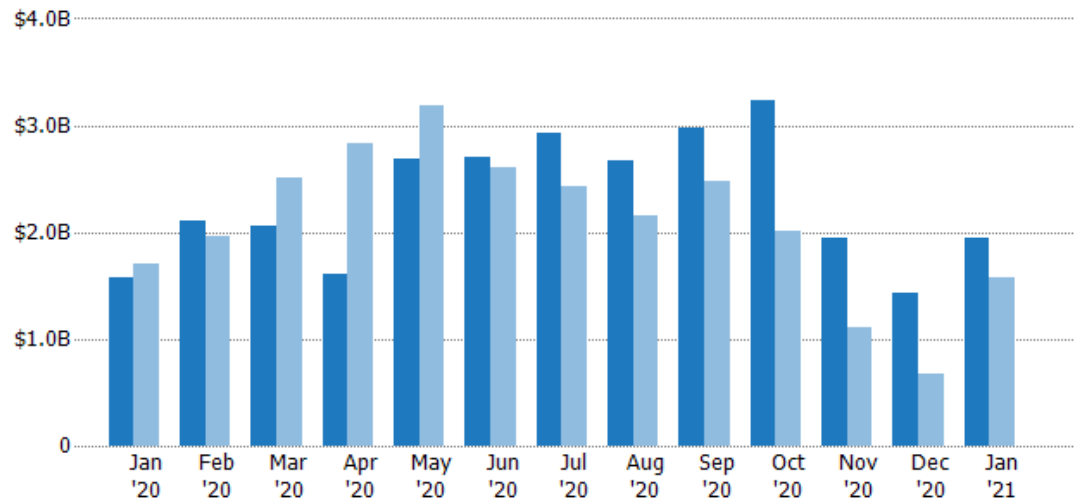
## New Listing Volume

The sum of the listing price of residential listings that were added each month.

### Filters Used

MLS: Contra Costa Association of REALTORS®, Bay East Association of REALTORS®, and bridgeMLS  
 County: Alameda County, California, Contra Costa County, California

| Month/Year | Volume  | % Chg. |
|------------|---------|--------|
| Jan '21    | \$1.94B | 23.6%  |
| Jan '20    | \$1.57B | -7.4%  |
| Jan '19    | \$1.7B  | -6.6%  |



|                                |         |         |         |         |         |        |         |         |         |         |         |         |         |
|--------------------------------|---------|---------|---------|---------|---------|--------|---------|---------|---------|---------|---------|---------|---------|
| Current Year                   | \$1.57B | \$2.1B  | \$2.05B | \$1.61B | \$2.69B | \$2.7B | \$2.93B | \$2.66B | \$2.98B | \$3.24B | \$1.94B | \$1.44B | \$1.94B |
| Prior Year                     | \$1.7B  | \$1.96B | \$2.51B | \$2.83B | \$3.18B | \$2.6B | \$2.43B | \$2.16B | \$2.47B | \$2.01B | \$1.11B | \$666M  | \$1.57B |
| Percent Change from Prior Year | -7%     | 7%      | -18%    | -43%    | -15%    | 4%     | 21%     | 23%     | 20%     | 61%     | 74%     | 116%    | 24%     |

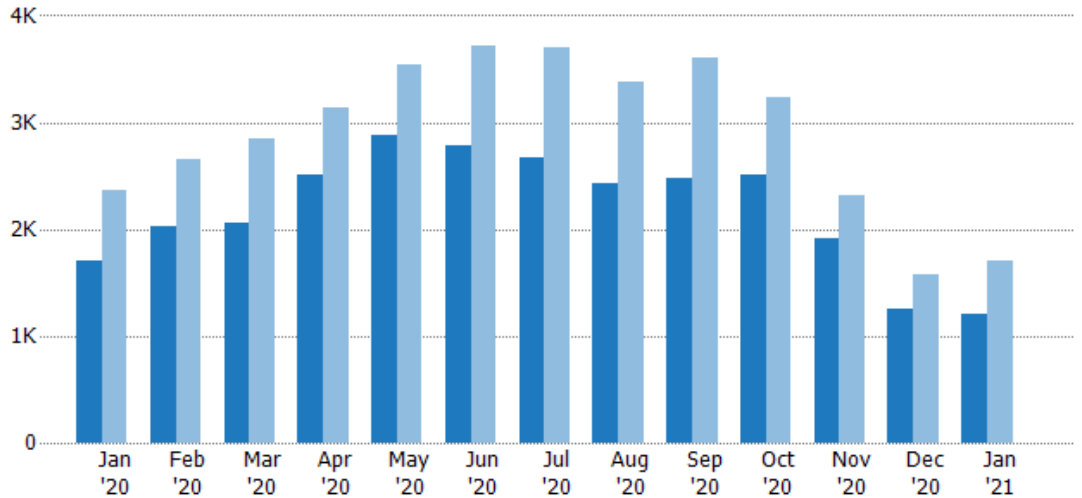
## Active Listings

The number of active residential listings at the end of each month.

### Filters Used

MLS: Contra Costa Association of REALTORS®, Bay East Association of REALTORS®, and bridgeMLS  
 County: Alameda County, California, Contra Costa County, California

| Month/Year | Count | % Chg. |
|------------|-------|--------|
| Jan '21    | 1.2K  | -29.9% |
| Jan '20    | 1.71K | -27.6% |
| Jan '19    | 2.36K | -30.5% |



|                                |       |       |       |       |       |       |       |       |       |       |       |       |       |
|--------------------------------|-------|-------|-------|-------|-------|-------|-------|-------|-------|-------|-------|-------|-------|
| Current Year                   | 1.71K | 2.02K | 2.06K | 2.51K | 2.88K | 2.78K | 2.67K | 2.43K | 2.47K | 2.5K  | 1.92K | 1.25K | 1.2K  |
| Prior Year                     | 2.36K | 2.66K | 2.85K | 3.14K | 3.54K | 3.71K | 3.7K  | 3.38K | 3.6K  | 3.24K | 2.32K | 1.58K | 1.71K |
| Percent Change from Prior Year | -28%  | -24%  | -28%  | -20%  | -19%  | -25%  | -28%  | -28%  | -31%  | -23%  | -17%  | -21%  | -30%  |

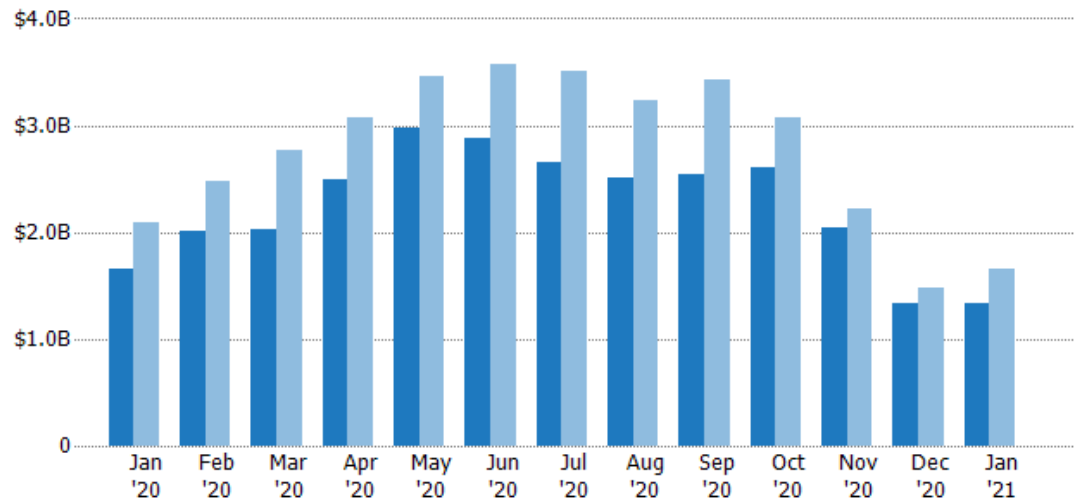
## Active Listing Volume

The sum of the listing price of active residential listings at the end of each month.

### Filters Used

MLS: Contra Costa Association of REALTORS®, Bay East Association of REALTORS®, and bridgeMLS  
 County: Alameda County, California, Contra Costa County, California

| Month/Year | Volume  | % Chg. |
|------------|---------|--------|
| Jan '21    | \$1.33B | -19.8% |
| Jan '20    | \$1.66B | -20.6% |
| Jan '19    | \$2.09B | -23.5% |



|                                |         |         |         |         |         |         |         |         |         |         |         |         |         |
|--------------------------------|---------|---------|---------|---------|---------|---------|---------|---------|---------|---------|---------|---------|---------|
| Current Year                   | \$1.66B | \$2.01B | \$2.02B | \$2.49B | \$2.97B | \$2.88B | \$2.65B | \$2.5B  | \$2.54B | \$2.6B  | \$2.04B | \$1.34B | \$1.33B |
| Prior Year                     | \$2.09B | \$2.48B | \$2.77B | \$3.07B | \$3.45B | \$3.57B | \$3.51B | \$3.24B | \$3.43B | \$3.07B | \$2.22B | \$1.48B | \$1.66B |
| Percent Change from Prior Year | -21%    | -19%    | -27%    | -19%    | -14%    | -19%    | -24%    | -23%    | -26%    | -15%    | -8%     | -10%    | -20%    |

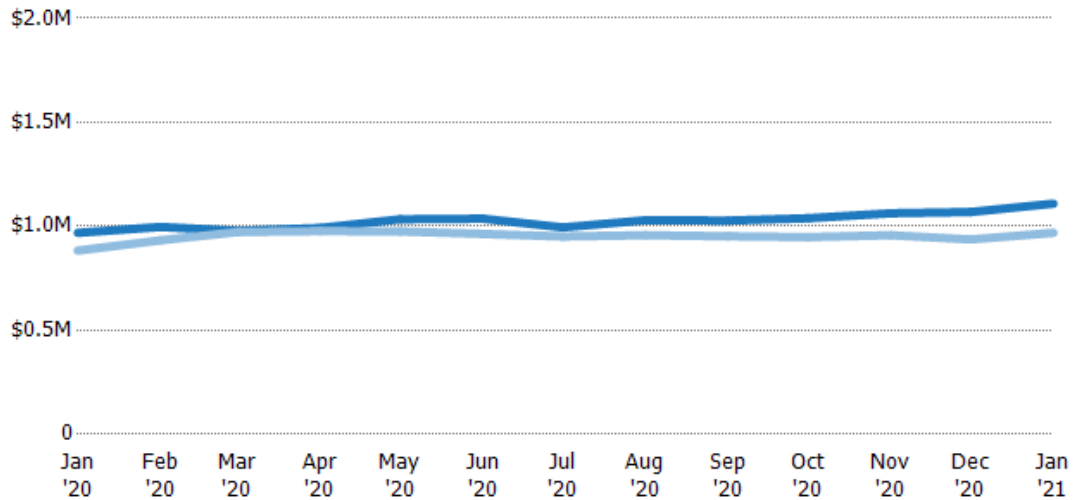
## Average Listing Price

The average listing price of active residential listings at the end of each month.

### Filters Used

MLS: Contra Costa Association of REALTORS®, Bay East Association of REALTORS®, and bridgeMLS  
 County: Alameda County, California, Contra Costa County, California

| Month/Year | Price   | % Chg. |
|------------|---------|--------|
| Jan '21    | \$1.11M | 14.5%  |
| Jan '20    | \$968K  | 9.6%   |
| Jan '19    | \$883K  | 10.2%  |



|                                |        |        |        |        |         |         |        |         |         |         |         |         |         |
|--------------------------------|--------|--------|--------|--------|---------|---------|--------|---------|---------|---------|---------|---------|---------|
| Current Year                   | \$968K | \$997K | \$978K | \$992K | \$1.03M | \$1.04M | \$995K | \$1.03M | \$1.03M | \$1.04M | \$1.06M | \$1.07M | \$1.11M |
| Prior Year                     | \$883K | \$932K | \$972K | \$977K | \$975K  | \$963K  | \$951K | \$957K  | \$952K  | \$948K  | \$957K  | \$937K  | \$968K  |
| Percent Change from Prior Year | 10%    | 7%     | 1%     | 2%     | 6%      | 8%      | 5%     | 8%      | 8%      | 10%     | 11%     | 14%     | 14%     |

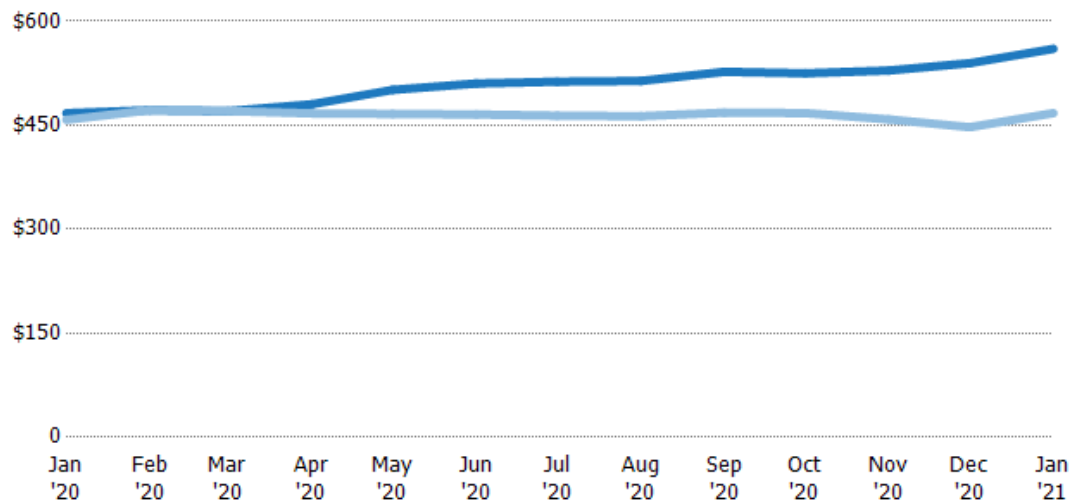
## Average Listing Price per Sq Ft

The average of listing prices divided by the living area of homes on market at the end of each month.

### Filters Used

MLS: Contra Costa Association of REALTORS®, Bay East Association of REALTORS®, and bridgeMLS  
 County: Alameda County, California, Contra Costa County, California

| Month/Year | Price/sq ft | % Chg. |
|------------|-------------|--------|
| Jan '21    | \$560       | 19.8%  |
| Jan '20    | \$467       | 2.1%   |
| Jan '19    | \$458       | -5.1%  |



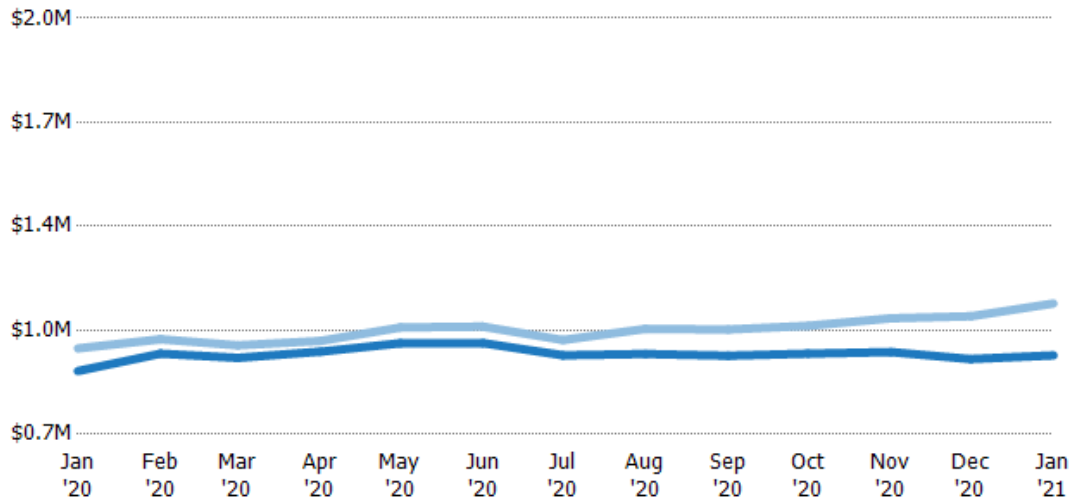
|                                |       |       |       |       |       |       |       |       |       |       |       |       |       |
|--------------------------------|-------|-------|-------|-------|-------|-------|-------|-------|-------|-------|-------|-------|-------|
| Current Year                   | \$467 | \$472 | \$470 | \$480 | \$501 | \$510 | \$513 | \$514 | \$527 | \$525 | \$529 | \$540 | \$560 |
| Prior Year                     | \$458 | \$472 | \$471 | \$467 | \$466 | \$466 | \$464 | \$463 | \$468 | \$468 | \$459 | \$447 | \$467 |
| Percent Change from Prior Year | 2%    | 0     | 0%    | 3%    | 7%    | 10%   | 11%   | 11%   | 13%   | 12%   | 15%   | 21%   | 20%   |

## Average Listing Price vs Average Est Value

The average listing price as a percentage of the average AVM or RVM® valuation estimate for active listings each month.

### Filters Used

MLS: Contra Costa Association of REALTORS®, Bay East Association of REALTORS®, and bridgeMLS  
 County: Alameda County, California, Contra Costa County, California



|   |        |        |        |        |         |         |        |         |         |         |         |         |         |
|---|--------|--------|--------|--------|---------|---------|--------|---------|---------|---------|---------|---------|---------|
| Avg Est Value                             | \$898K | \$952K | \$939K | \$958K | \$984K  | \$985K  | \$947K | \$951K  | \$946K  | \$952K  | \$957K  | \$935K  | \$947K  |
| Avg Listing Price                         | \$968K | \$997K | \$978K | \$992K | \$1.03M | \$1.04M | \$995K | \$1.03M | \$1.03M | \$1.04M | \$1.06M | \$1.07M | \$1.11M |
| Avg Listing Price as a % of Avg Est Value | 108%   | 105%   | 104%   | 104%   | 105%    | 105%    | 105%   | 108%    | 109%    | 109%    | 111%    | 114%    | 117%    |

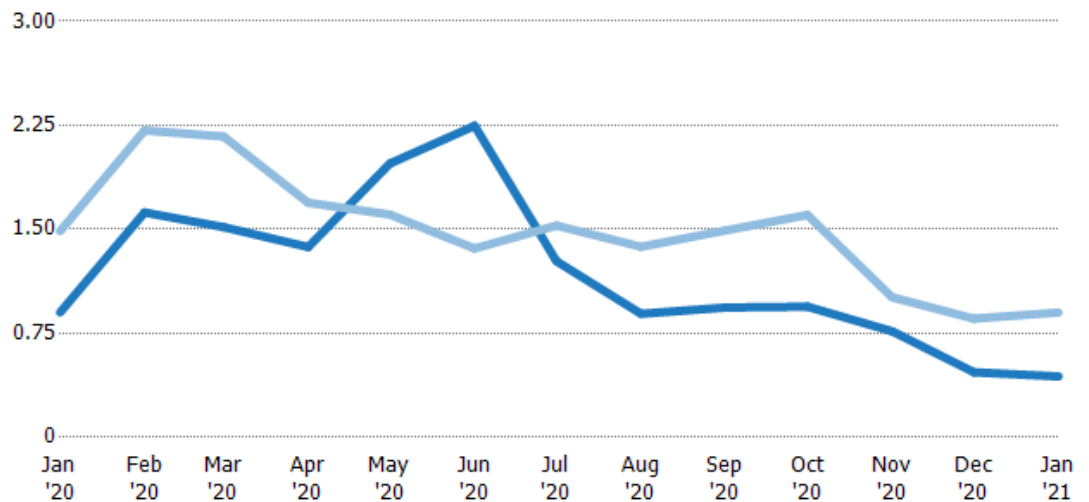
## Months of Inventory

The number of months it would take to exhaust active listings at the current sales rate.

### Filters Used

MLS: Contra Costa Association of REALTORS®, Bay East Association of REALTORS®, and bridgeMLS  
 County: Alameda County, California, Contra Costa County, California

| Month/Year | Months | % Chg. |
|------------|--------|--------|
| Jan '21    | 0.44   | -51.2% |
| Jan '20    | 0.9    | -39.5% |
| Jan '19    | 1.49   | -42.9% |



|                                |      |      |      |      |      |      |      |      |      |      |      |      |      |
|--------------------------------|------|------|------|------|------|------|------|------|------|------|------|------|------|
| Current Year                   | 0.9  | 1.62 | 1.52 | 1.37 | 1.98 | 2.25 | 1.27 | 0.89 | 0.94 | 0.94 | 0.77 | 0.47 | 0.44 |
| Prior Year                     | 1.49 | 2.21 | 2.17 | 1.69 | 1.61 | 1.36 | 1.53 | 1.37 | 1.49 | 1.6  | 1.01 | 0.86 | 0.9  |
| Percent Change from Prior Year | -39% | -27% | -30% | -19% | 23%  | 65%  | -17% | -35% | -37% | -41% | -24% | -45% | -51% |

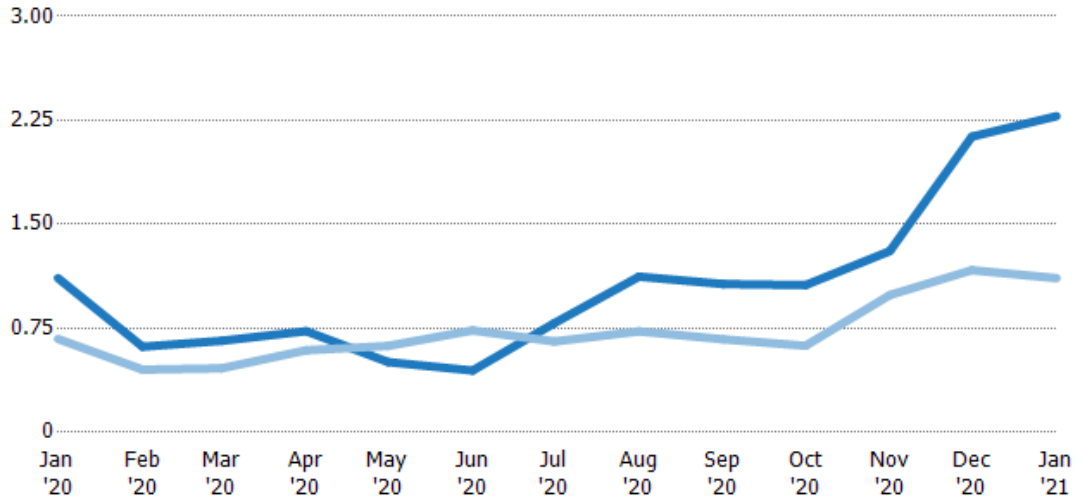
## Absorption Rate

The percentage of inventory sold per month.

### Filters Used

MLS: Contra Costa Association of REALTORS®, Bay East Association of REALTORS®, and bridgeMLS  
County: Alameda County, California, Contra Costa County, California

| Month/Year | Rate | Chg.    |
|------------|------|---------|
| Jan '21    | 228% | -116.8% |
| Jan '20    | 111% | -43.9%  |
| Jan '19    | 67%  | 75.1%   |

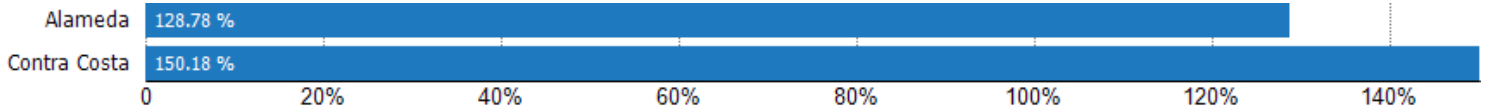


|                        |      |      |      |      |     |     |      |      |      |      |      |      |       |
|------------------------|------|------|------|------|-----|-----|------|------|------|------|------|------|-------|
| Current Year           | 111% | 62%  | 66%  | 73%  | 51% | 45% | 79%  | 112% | 107% | 106% | 131% | 213% | 228%  |
| Prior Year             | 67%  | 45%  | 46%  | 59%  | 62% | 73% | 65%  | 73%  | 67%  | 62%  | 99%  | 117% | 111%  |
| Change from Prior Year | -44% | -16% | -20% | -14% | 12% | 29% | -13% | -39% | -40% | -44% | -32% | -96% | -117% |

## Absorption Rate (By County)

The percentage of the inventory sold during the last month by county.

Filters Used: MLS: Contra Costa Association of REALTORS®, Bay East Association of REALTORS®, and bridgeMLS; County: Alameda County, California, Contra Costa County, California



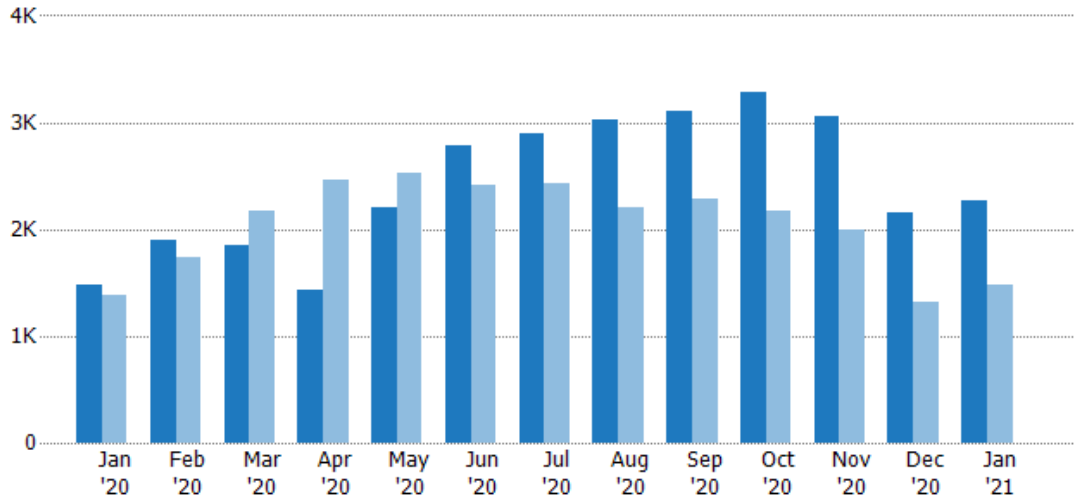
## Pending Sales

The number of residential properties with accepted offers that were available at the end each month.

### Filters Used

MLS: Contra Costa Association of REALTORS®, Bay East Association of REALTORS®, and bridgeMLS  
 County: Alameda County, California, Contra Costa County, California

| Month/Year | Count | % Chg. |
|------------|-------|--------|
| Jan '21    | 2.27K | 53.9%  |
| Jan '20    | 1.47K | 7%     |
| Jan '19    | 1.38K | 15.7%  |



|                                |       |       |       |       |       |       |       |       |       |       |       |       |       |
|--------------------------------|-------|-------|-------|-------|-------|-------|-------|-------|-------|-------|-------|-------|-------|
| Current Year                   | 1.47K | 1.9K  | 1.85K | 1.43K | 2.2K  | 2.79K | 2.9K  | 3.02K | 3.11K | 3.29K | 3.06K | 2.15K | 2.27K |
| Prior Year                     | 1.38K | 1.74K | 2.17K | 2.46K | 2.53K | 2.41K | 2.42K | 2.2K  | 2.29K | 2.17K | 1.99K | 1.33K | 1.47K |
| Percent Change from Prior Year | 7%    | 9%    | -14%  | -42%  | -13%  | 16%   | 20%   | 38%   | 36%   | 52%   | 54%   | 62%   | 54%   |

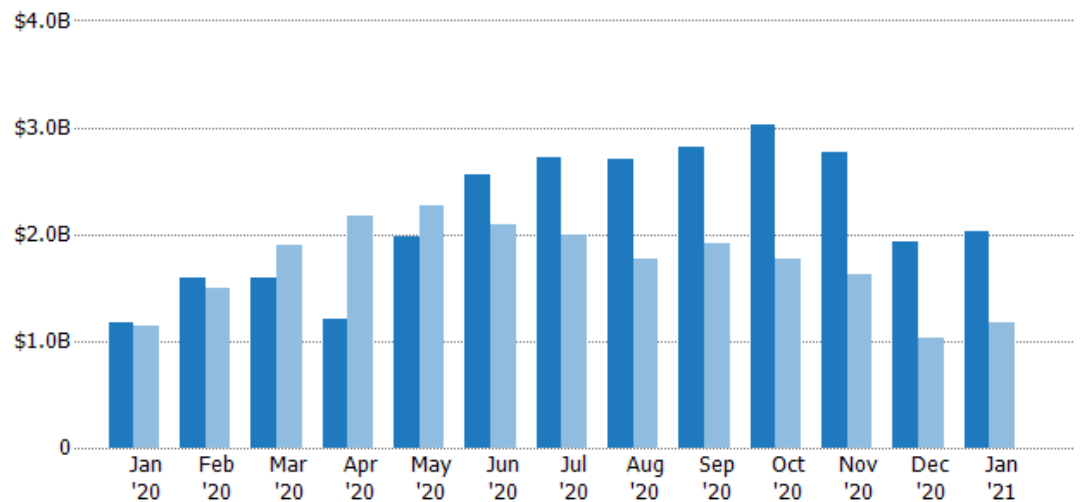
## Pending Sales Volume

The sum of the sales price of residential properties with accepted offers that were available at the end of each month.

### Filters Used

MLS: Contra Costa Association of REALTORS®, Bay East Association of REALTORS®, and bridgeMLS  
 County: Alameda County, California, Contra Costa County, California

| Month/Year | Volume  | % Chg. |
|------------|---------|--------|
| Jan '21    | \$2.02B | 72.5%  |
| Jan '20    | \$1.17B | 3%     |
| Jan '19    | \$1.14B | 6.3%   |



|                                |         |         |        |         |         |         |         |         |         |         |         |         |         |
|--------------------------------|---------|---------|--------|---------|---------|---------|---------|---------|---------|---------|---------|---------|---------|
| Current Year                   | \$1.17B | \$1.59B | \$1.6B | \$1.2B  | \$1.98B | \$2.56B | \$2.72B | \$2.7B  | \$2.82B | \$3.02B | \$2.77B | \$1.93B | \$2.02B |
| Prior Year                     | \$1.14B | \$1.5B  | \$1.9B | \$2.18B | \$2.26B | \$2.1B  | \$1.99B | \$1.78B | \$1.91B | \$1.77B | \$1.62B | \$1.03B | \$1.17B |
| Percent Change from Prior Year | 3%      | 6%      | -16%   | -45%    | -12%    | 22%     | 36%     | 52%     | 48%     | 71%     | 71%     | 86%     | 73%     |

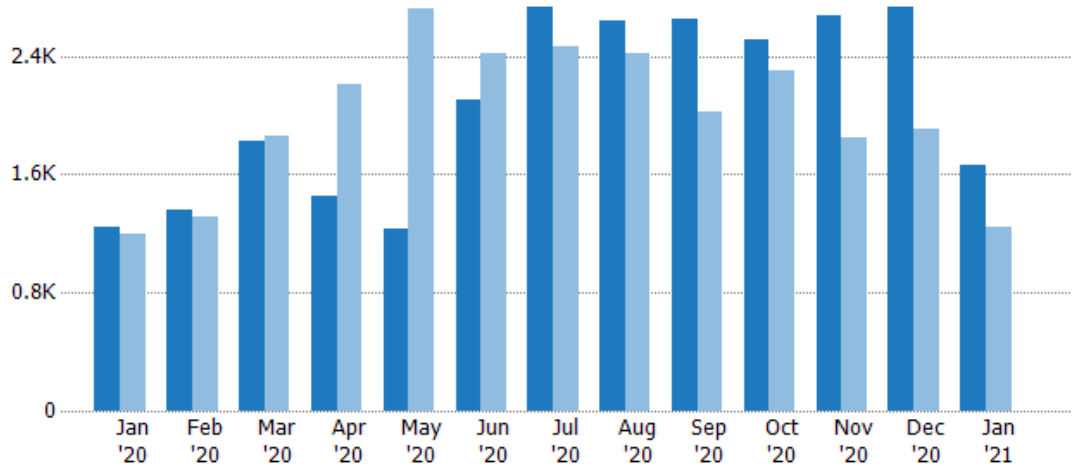
## Closed Sales

The total number of residential properties sold each month.

### Filters Used

MLS: Contra Costa Association of REALTORS®, Bay East Association of REALTORS®, and bridgeMLS  
 County: Alameda County, California, Contra Costa County, California

| Month/Year | Count | % Chg. |
|------------|-------|--------|
| Jan '21    | 1.66K | 33.1%  |
| Jan '20    | 1.25K | 3.8%   |
| Jan '19    | 1.2K  | 7.4%   |



|                                |       |       |       |       |       |       |       |       |       |       |       |       |       |
|--------------------------------|-------|-------|-------|-------|-------|-------|-------|-------|-------|-------|-------|-------|-------|
| Current Year                   | 1.25K | 1.36K | 1.83K | 1.46K | 1.24K | 2.1K  | 2.73K | 2.64K | 2.66K | 2.51K | 2.67K | 2.73K | 1.66K |
| Prior Year                     | 1.2K  | 1.31K | 1.86K | 2.21K | 2.73K | 2.42K | 2.46K | 2.41K | 2.02K | 2.3K  | 1.85K | 1.9K  | 1.25K |
| Percent Change from Prior Year | 4%    | 4%    | -2%   | -34%  | -55%  | -13%  | 11%   | 10%   | 31%   | 9%    | 45%   | 44%   | 33%   |

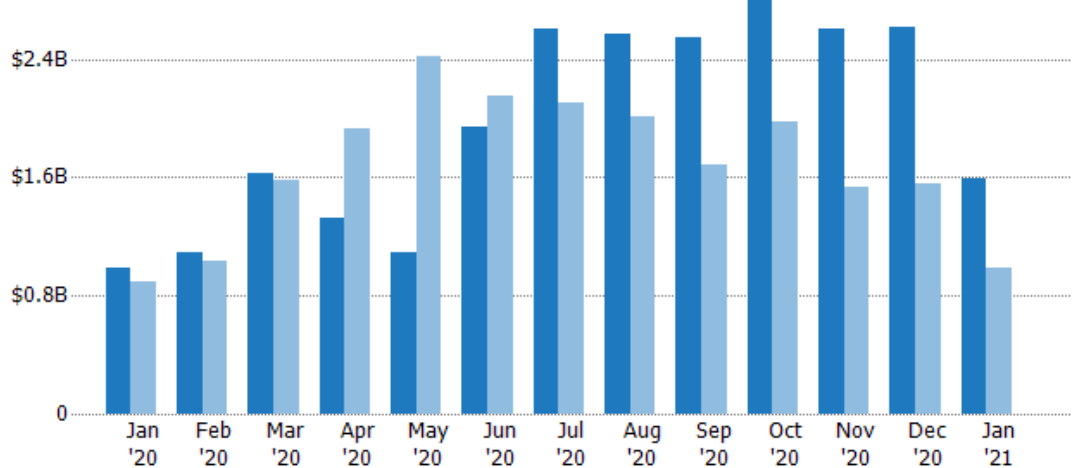
## Closed Sales Volume

The sum of the sales price of residential properties sold each month.

### Filters Used

MLS: Contra Costa Association of REALTORS®, Bay East Association of REALTORS®, and bridgeMLS  
 County: Alameda County, California, Contra Costa County, California

| Month/Year | Volume | % Chg. |
|------------|--------|--------|
| Jan '21    | \$1.6B | 62.4%  |
| Jan '20    | \$983M | 10.1%  |
| Jan '19    | \$893M | 3.5%   |



|                                |        |         |         |         |         |         |         |         |         |         |         |         |        |
|--------------------------------|--------|---------|---------|---------|---------|---------|---------|---------|---------|---------|---------|---------|--------|
| Current Year                   | \$983M | \$1.1B  | \$1.62B | \$1.32B | \$1.09B | \$1.94B | \$2.61B | \$2.57B | \$2.54B | \$2.8B  | \$2.6B  | \$2.62B | \$1.6B |
| Prior Year                     | \$893M | \$1.04B | \$1.58B | \$1.93B | \$2.42B | \$2.15B | \$2.1B  | \$2.01B | \$1.68B | \$1.97B | \$1.53B | \$1.56B | \$983M |
| Percent Change from Prior Year | 10%    | 6%      | 3%      | -32%    | -55%    | -10%    | 24%     | 28%     | 51%     | 42%     | 70%     | 68%     | 62%    |

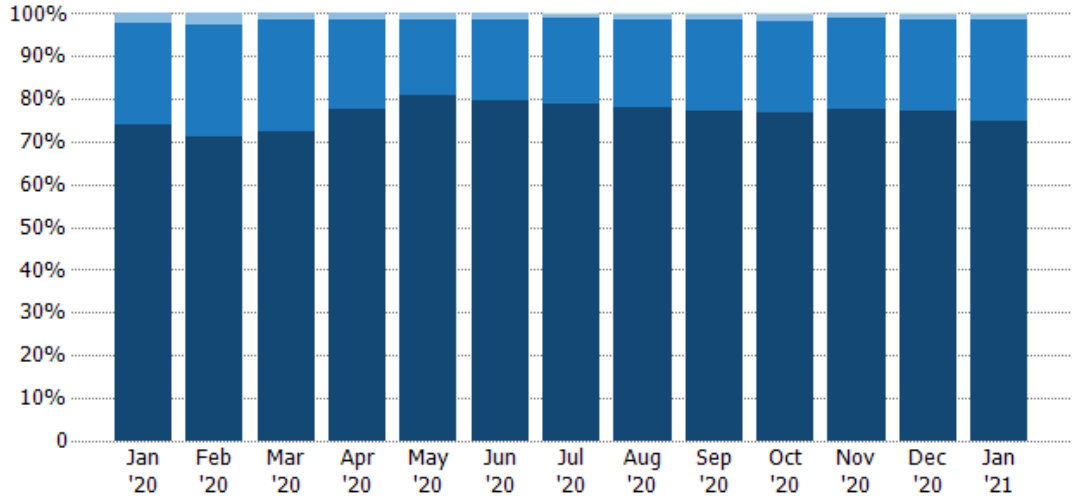


## Closed Sales by Property Type

The percentage of residential properties sold each month by property type.

### Filters Used

MLS: Contra Costa Association of REALTORS®, Bay East Association of REALTORS®, and bridgeMLS  
County: Alameda County, California, Contra Costa County, California



| Property Type           | Jan '20 | Feb '20 | Mar '20 | Apr '20 | May '20 | Jun '20 | Jul '20 | Aug '20 | Sep '20 | Oct '20 | Nov '20 | Dec '20 | Jan '21 |
|-------------------------|---------|---------|---------|---------|---------|---------|---------|---------|---------|---------|---------|---------|---------|
| Multifamily/Multiplex   | -       | -       | -       | -       | -       | -       | 0%      | 0%      | 0%      | 0%      | -       | 0%      | 0%      |
| Mobile/Manufactured     | 2%      | 3%      | 1%      | 1%      | 2%      | 1%      | 1%      | 1%      | 2%      | 2%      | 1%      | 1%      | 1%      |
| Condo/Townhouse         | 24%     | 26%     | 26%     | 21%     | 18%     | 19%     | 20%     | 21%     | 21%     | 21%     | 21%     | 21%     | 24%     |
| Single Family Residence | 74%     | 71%     | 72%     | 78%     | 81%     | 80%     | 79%     | 78%     | 77%     | 77%     | 78%     | 77%     | 75%     |

## Closed Sales (By County)

The total number of residential properties sold during the last month by county.

Filters Used: MLS: Contra Costa Association of REALTORS®, Bay East Association of REALTORS®, and bridgeMLS; County: Alameda County, California, Contra Costa County, California

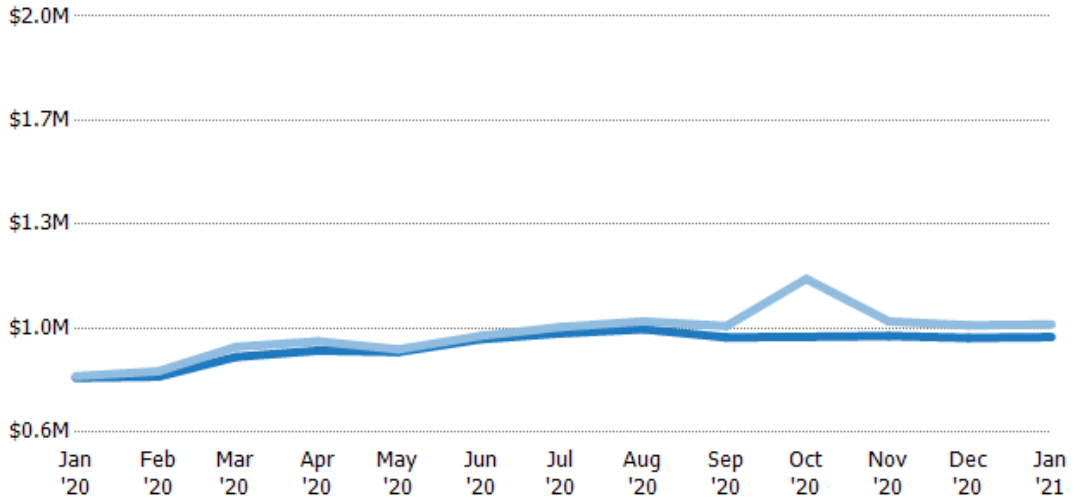


## Average Sales Price vs Average Listing Price

The average sales price as a percentage of the average listing price for properties sold each month.

**Filters Used**

MLS: Contra Costa Association of REALTORS®, Bay East Association of REALTORS®, and bridgeMLS  
County: Alameda County, California, Contra Costa County, California



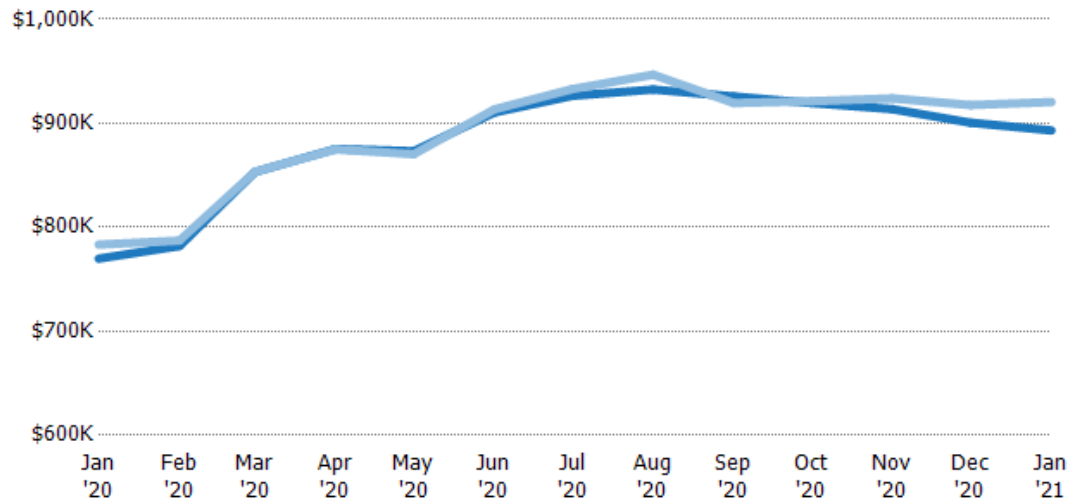
|  |        |        |        |        |        |        |        |        |        |         |        |        |        |
|--|--------|--------|--------|--------|--------|--------|--------|--------|--------|---------|--------|--------|--------|
| Avg List Price                           | \$783K | \$787K | \$853K | \$875K | \$870K | \$913K | \$933K | \$947K | \$919K | \$921K  | \$924K | \$918K | \$920K |
| Avg Sales Price                          | \$789K | \$805K | \$887K | \$906K | \$879K | \$925K | \$954K | \$973K | \$957K | \$1.12M | \$973K | \$960K | \$963K |
| Avg Sales Price as a % of Avg List Price | 101%   | 102%   | 104%   | 104%   | 101%   | 101%   | 102%   | 103%   | 104%   | 121%    | 105%   | 105%   | 105%   |

## Average Sales Price vs Average Est Value

The average sales price as a percentage of the average AVM or RVM® valuation estimate for properties sold each month.

**Filters Used**

MLS: Contra Costa Association of REALTORS®, Bay East Association of REALTORS®, and bridgeMLS  
County: Alameda County, California, Contra Costa County, California



|   |        |        |        |        |        |        |        |        |        |        |        |        |        |
|---|--------|--------|--------|--------|--------|--------|--------|--------|--------|--------|--------|--------|--------|
| Avg Est Value                           | \$770K | \$782K | \$853K | \$875K | \$873K | \$910K | \$926K | \$932K | \$926K | \$919K | \$914K | \$901K | \$893K |
| Avg Sales Price                         | \$783K | \$787K | \$853K | \$875K | \$870K | \$913K | \$933K | \$947K | \$919K | \$921K | \$924K | \$918K | \$920K |
| Avg Sales Price as a % of Avg Est Value | 102%   | 101%   | 100%   | 100%   | 100%   | 100%   | 101%   | 102%   | 99%    | 100%   | 101%   | 102%   | 103%   |

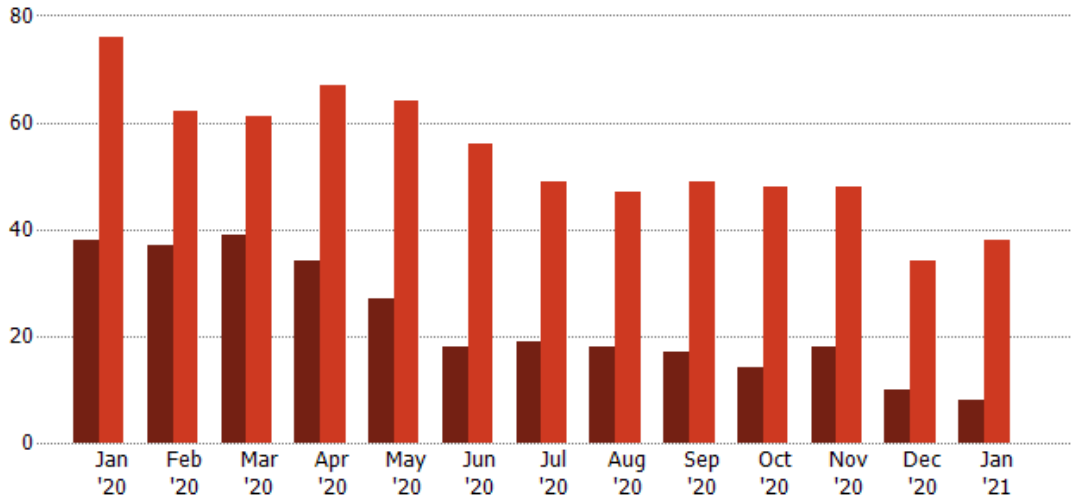
## Distressed Listings

The number of distressed residential properties that were for sale at the end of each month.

### Filters Used

MLS: Contra Costa Association of REALTORS®, Bay East Association of REALTORS®, and bridgeMLS  
County: Alameda County, California, Contra Costa County, California

| Month/Year | Count | % Chg. |
|------------|-------|--------|
| Jan '21    | 8     | -78.9% |
| Jan '20    | 38    | -50%   |
| Jan '19    | 76    | -27.6% |

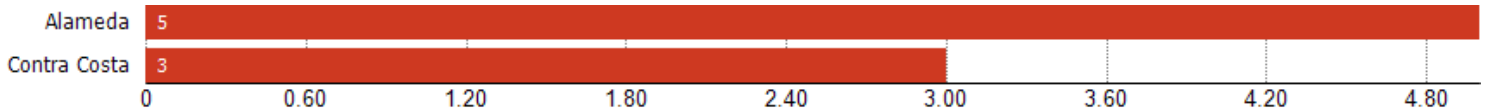


|                                |      |      |      |      |      |      |      |      |      |      |      |      |      |
|--------------------------------|------|------|------|------|------|------|------|------|------|------|------|------|------|
| Current Year                   | 38   | 37   | 39   | 34   | 27   | 18   | 19   | 18   | 17   | 14   | 18   | 10   | 8    |
| Prior Year                     | 76   | 62   | 61   | 67   | 64   | 56   | 49   | 47   | 49   | 48   | 48   | 34   | 38   |
| Percent Change from Prior Year | -50% | -40% | -36% | -49% | -58% | -68% | -61% | -62% | -65% | -71% | -63% | -71% | -79% |

## Distressed Listings (By County)

The number of distressed single-family, condominium and townhome properties that were for sale at the end of the last month by county.

Filters Used: MLS: Contra Costa Association of REALTORS®, Bay East Association of REALTORS®, and bridgeMLS; County: Alameda County, California, Contra Costa County, California



## Appendix

The metrics that are calculated by RPR® may show the same general trends as those published by other sources (i.e. MLS, Associations or vendors), but because of our processes and parcel-centric approach, some variation may occur. Data sources include MLS's, where licensed, and public records for more in-depth metrics on distressed properties.

### Report Details

**Report Name:** Monthly Market Data Report

**Run Date:** 02/02/2021

**Scheduled:** Yes

**Report Date Range:** From 1/2020 To: 1/2021

### Information Included

- |  |  |
|--|--|
| <input checked="" type="checkbox"/> Include Cover Sheet        | <input checked="" type="checkbox"/> Averages         |
| <input type="checkbox"/> Include Key Metric Summary            | <input checked="" type="checkbox"/> Include Appendix |
| <input checked="" type="checkbox"/> Include Metrics By: County | <input type="checkbox"/> Medians                     |

### Listing Filters

**Property Types:** All

**Sales Types:** All

**Price Range:** None

### Location Filters

**State:** All

**County:** Alameda County, California      Contra Costa County, California

**ZIP Code:** All

### Listing Activity Charts

- New Listings
- Active Listings
- Average Listing Price
- Average Listing Price per Sq Ft
- Average Listing Price vs Est Value
- Median Days in RPR
- Months of Inventory
- Absorption Rate

### Sales Activity Charts

- Active/Pending/Sold
- New Pending Sales
- Pending Sales
- Closed Sales
- Average Sales Price
- Average Sales Price per Sq Ft
- Average Sales Price vs Listing Price
- Average Sales Price vs Est Value

### Distressed Charts

- Distressed Listings
- Distressed Sales

### Data Tables Using 1/2021 data

- Listing Activity by ZIP
- Listing Activity by Metro Area
- Sales Activity by ZIP
- Sales Activity by Metro Area