

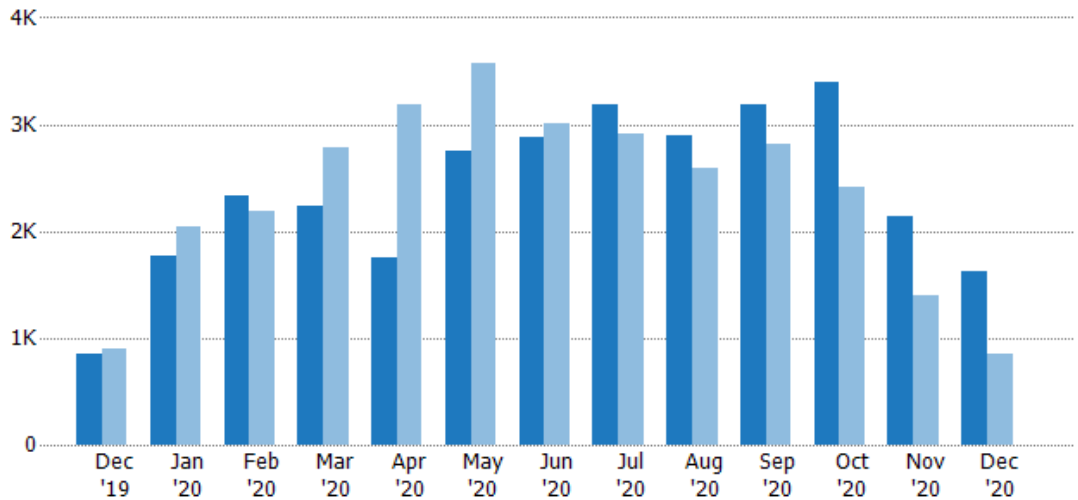
New Listings

The number of new residential listings that were added each month.

Filters Used

MLS: Contra Costa Association of REALTORS®, Bay East Association of REALTORS®, and bridgeMLS
 County: Alameda County, California, Contra Costa County, California

Month/Year	Count	% Chg.
Dec '20	1.62K	88.8%
Dec '19	858	-5.4%
Dec '18	907	10.7%



	Dec '19	Jan '20	Feb '20	Mar '20	Apr '20	May '20	Jun '20	Jul '20	Aug '20	Sep '20	Oct '20	Nov '20	Dec '20
Current Year	858	1.78K	2.34K	2.23K	1.76K	2.74K	2.88K	3.18K	2.9K	3.18K	3.4K	2.13K	1.62K
Prior Year	907	2.04K	2.19K	2.78K	3.18K	3.57K	3.01K	2.91K	2.6K	2.82K	2.41K	1.4K	858
Percent Change from Prior Year	-5%	-13%	6%	-20%	-45%	-23%	-4%	9%	12%	13%	41%	52%	89%

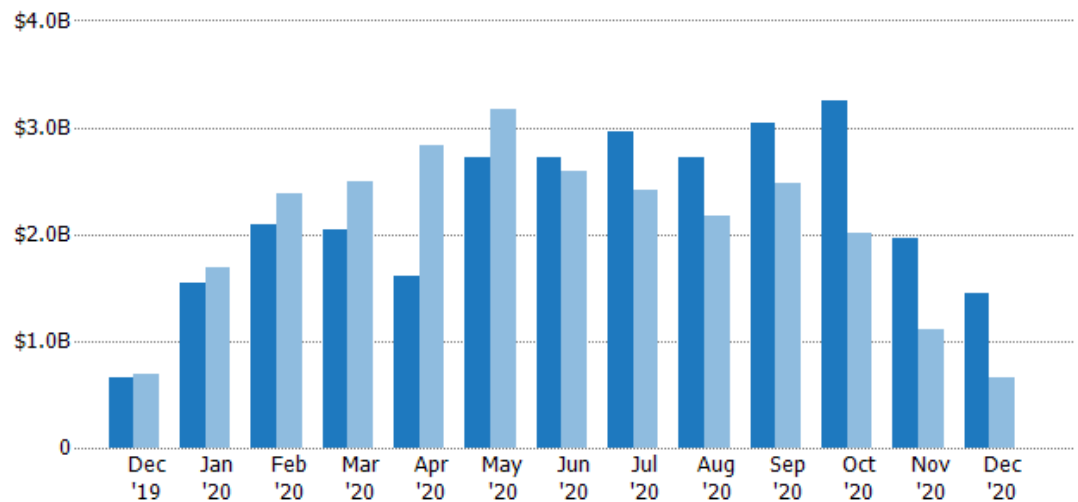
New Listing Volume

The sum of the listing price of residential listings that were added each month.

Filters Used

MLS: Contra Costa Association of REALTORS®, Bay East Association of REALTORS®, and bridgeMLS
 County: Alameda County, California, Contra Costa County, California

Month/Year	Volume	% Chg.
Dec '20	\$1.45B	120.3%
Dec '19	\$657M	-4.5%
Dec '18	\$688M	3.5%



	Dec '19	Jan '20	Feb '20	Mar '20	Apr '20	May '20	Jun '20	Jul '20	Aug '20	Sep '20	Oct '20	Nov '20	Dec '20
Current Year	\$657M	\$1.55B	\$2.1B	\$2.04B	\$1.61B	\$2.72B	\$2.71B	\$2.96B	\$2.72B	\$3.03B	\$3.25B	\$1.96B	\$1.45B
Prior Year	\$688M	\$1.69B	\$2.37B	\$2.5B	\$2.83B	\$3.17B	\$2.58B	\$2.41B	\$2.16B	\$2.48B	\$2B	\$1.1B	\$657M
Percent Change from Prior Year	-4%	-8%	-12%	-18%	-43%	-14%	5%	23%	26%	22%	62%	78%	120%

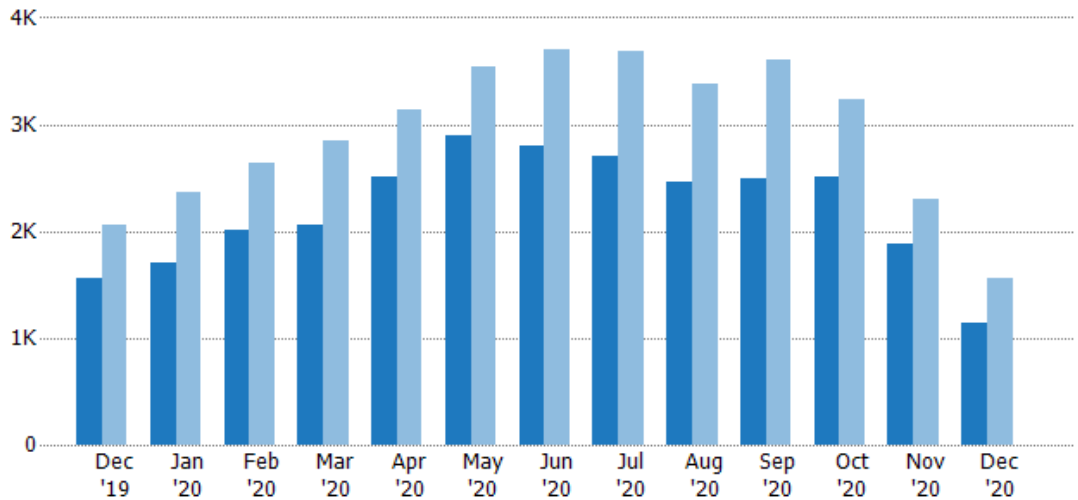
Active Listings

The number of active residential listings at the end of each month.

Filters Used

MLS: Contra Costa Association of REALTORS®, Bay East Association of REALTORS®, and bridgeMLS
 County: Alameda County, California, Contra Costa County, California

Month/Year	Count	% Chg.
Dec '20	1.15K	-26.5%
Dec '19	1.56K	-24.4%
Dec '18	2.06K	-32.4%



Current Year	1.56K	1.7K	2.02K	2.06K	2.5K	2.9K	2.81K	2.7K	2.47K	2.49K	2.52K	1.89K	1.15K
Prior Year	2.06K	2.36K	2.65K	2.84K	3.13K	3.53K	3.7K	3.68K	3.38K	3.6K	3.23K	2.3K	1.56K
Percent Change from Prior Year	-24%	-28%	-24%	-27%	-20%	-18%	-24%	-27%	-27%	-31%	-22%	-18%	-26%

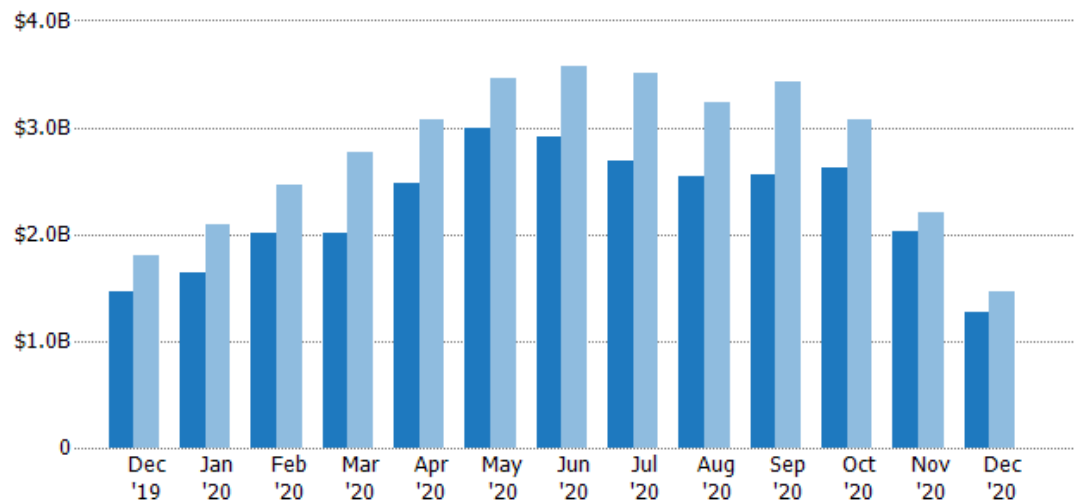
Active Listing Volume

The sum of the listing price of active residential listings at the end of each month.

Filters Used

MLS: Contra Costa Association of REALTORS®, Bay East Association of REALTORS®, and bridgeMLS
 County: Alameda County, California, Contra Costa County, California

Month/Year	Volume	% Chg.
Dec '20	\$1.28B	-13%
Dec '19	\$1.47B	-18.6%
Dec '18	\$1.8B	-22.7%



Current Year	\$1.47B	\$1.64B	\$2.01B	\$2.01B	\$2.48B	\$3B	\$2.91B	\$2.68B	\$2.54B	\$2.57B	\$2.62B	\$2.03B	\$1.28B
Prior Year	\$1.8B	\$2.08B	\$2.47B	\$2.77B	\$3.07B	\$3.45B	\$3.57B	\$3.5B	\$3.24B	\$3.43B	\$3.07B	\$2.21B	\$1.47B
Percent Change from Prior Year	-19%	-21%	-18%	-27%	-19%	-13%	-19%	-23%	-22%	-25%	-15%	-8%	-13%

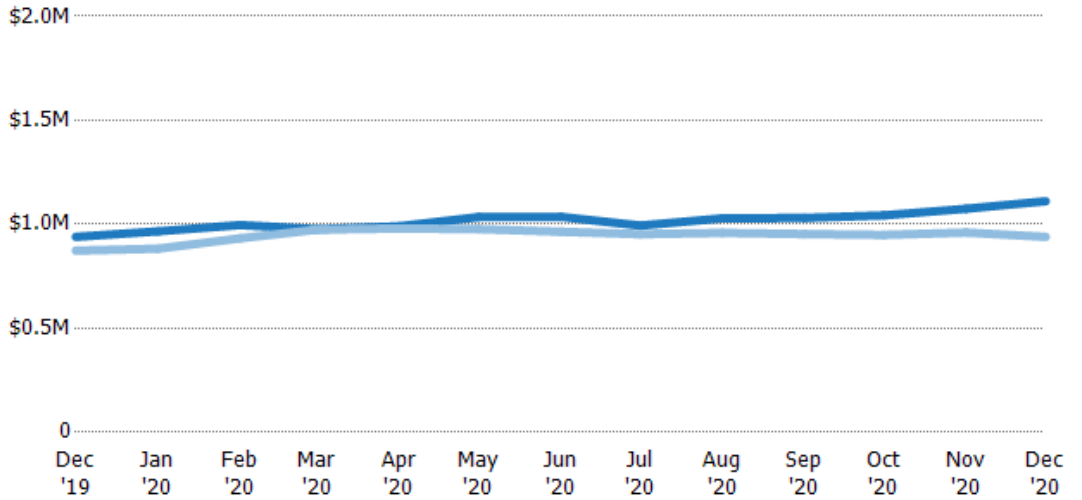
Average Listing Price

The average listing price of active residential listings at the end of each month.

Filters Used

MLS: Contra Costa Association of REALTORS®, Bay East Association of REALTORS®, and bridgeMLS
County: Alameda County, California, Contra Costa County, California

Month/Year	Price	% Chg.
Dec '20	\$1.11M	18.2%
Dec '19	\$940K	7.6%
Dec '18	\$873K	14.4%



Current Year	\$940K	\$966K	\$996K	\$976K	\$990K	\$1.03M	\$1.04M	\$994K	\$1.03M	\$1.03M	\$1.04M	\$1.07M	\$1.11M
Prior Year	\$873K	\$883K	\$933K	\$974K	\$980K	\$977K	\$964K	\$952K	\$958K	\$953K	\$949K	\$960K	\$940K
Percent Change from Prior Year	8%	9%	7%	0%	1%	6%	7%	4%	7%	8%	10%	12%	18%

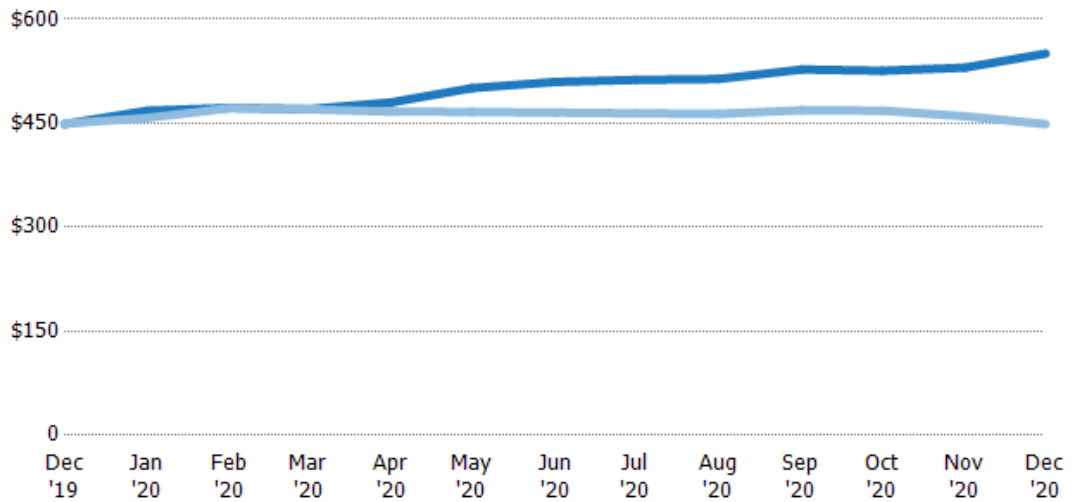
Average Listing Price per Sq Ft

The average of listing prices divided by the living area of homes on market at the end of each month.

Filters Used

MLS: Contra Costa Association of REALTORS®, Bay East Association of REALTORS®, and bridgeMLS
County: Alameda County, California, Contra Costa County, California

Month/Year	Price/sq ft	% Chg.
Dec '20	\$551	22.7%
Dec '19	\$449	-0.2%
Dec '18	\$449	-6.8%



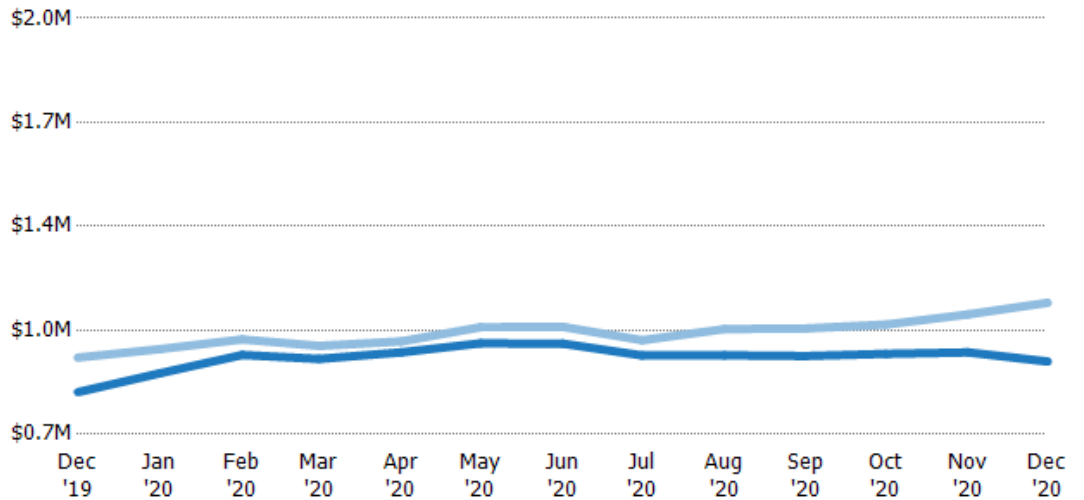
Current Year	\$449	\$468	\$472	\$470	\$480	\$501	\$510	\$513	\$514	\$528	\$526	\$530	\$551
Prior Year	\$449	\$458	\$472	\$470	\$467	\$466	\$465	\$464	\$464	\$469	\$468	\$460	\$449
Percent Change from Prior Year	0%	2%	0%	0%	3%	7%	9%	10%	11%	13%	12%	15%	23%

Average Listing Price vs Average Est Value

The average listing price as a percentage of the average AVM or RVM® valuation estimate for active listings each month.

Filters Used

MLS: Contra Costa Association of REALTORS®, Bay East Association of REALTORS®, and bridgeMLS
 County: Alameda County, California, Contra Costa County, California



	Dec '19	Jan '20	Feb '20	Mar '20	Apr '20	May '20	Jun '20	Jul '20	Aug '20	Sep '20	Oct '20	Nov '20	Dec '20
Avg Est Value	\$832K	\$891K	\$948K	\$935K	\$956K	\$984K	\$983K	\$946K	\$947K	\$945K	\$951K	\$956K	\$927K
Avg Listing Price	\$940K	\$966K	\$996K	\$976K	\$990K	\$1.03M	\$1.04M	\$994K	\$1.03M	\$1.03M	\$1.04M	\$1.07M	\$1.11M
Avg Listing Price as a % of Avg Est Value	113%	108%	105%	104%	104%	105%	105%	105%	109%	109%	110%	112%	120%

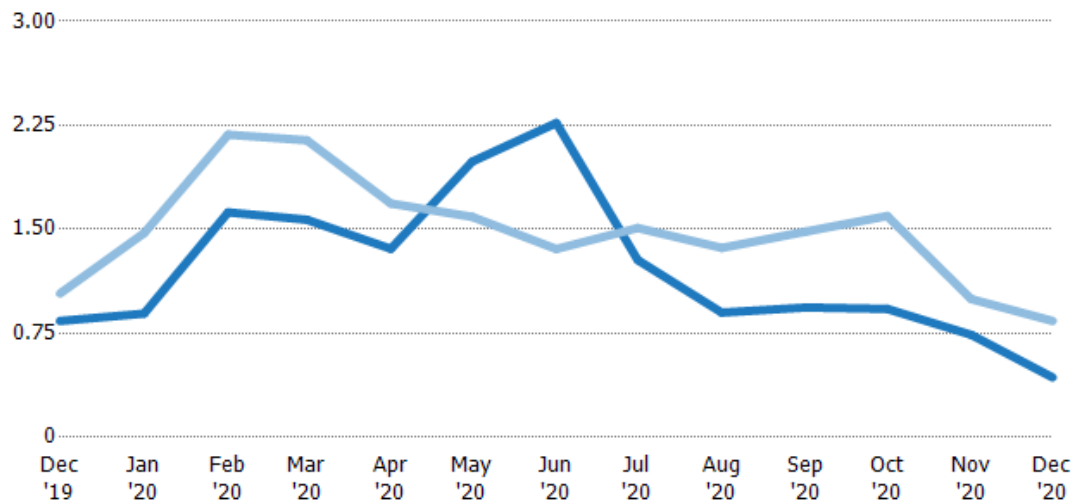
Months of Inventory

The number of months it would take to exhaust active listings at the current sales rate.

Filters Used

MLS: Contra Costa Association of REALTORS®, Bay East Association of REALTORS®, and bridgeMLS
 County: Alameda County, California, Contra Costa County, California

Month/Year	Months	% Chg.
Dec '20	0.43	-48.6%
Dec '19	0.84	-19.1%
Dec '18	1.04	-39.4%



	Dec '19	Jan '20	Feb '20	Mar '20	Apr '20	May '20	Jun '20	Jul '20	Aug '20	Sep '20	Oct '20	Nov '20	Dec '20
Current Year	0.84	0.89	1.62	1.57	1.36	1.99	2.27	1.28	0.9	0.94	0.93	0.74	0.43
Prior Year	1.04	1.47	2.18	2.14	1.69	1.59	1.36	1.51	1.37	1.48	1.6	1	0.84
Percent Change from Prior Year	-19%	-39%	-26%	-27%	-19%	25%	67%	-15%	-34%	-37%	-42%	-26%	-49%

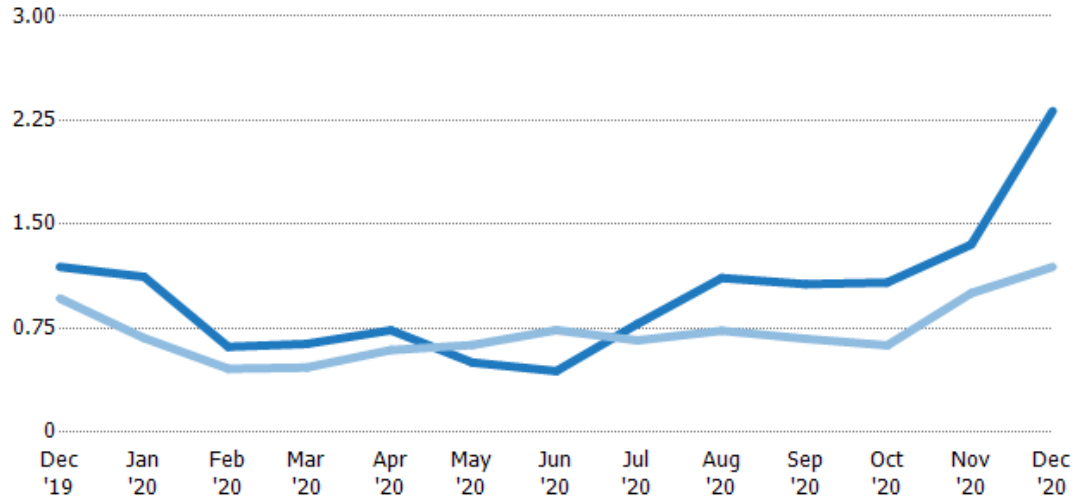
Absorption Rate

The percentage of inventory sold per month.

Filters Used

MLS: Contra Costa Association of REALTORS®, Bay East Association of REALTORS®, and bridgeMLS
County: Alameda County, California, Contra Costa County, California

Month/Year	Rate	Chg.
Dec '20	232%	-112.5%
Dec '19	119%	-22.8%
Dec '18	96%	65%

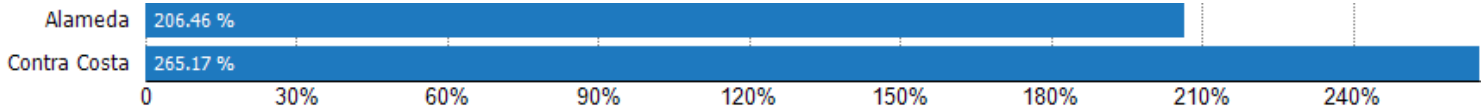


Current Year	119%	112%	62%	64%	74%	50%	44%	78%	111%	107%	108%	135%	232%
Prior Year	96%	68%	46%	47%	59%	63%	74%	66%	73%	67%	63%	100%	119%
Change from Prior Year	-23%	-44%	-16%	-17%	-14%	13%	30%	-12%	-38%	-39%	-45%	-35%	-112%

Absorption Rate (By County)

The percentage of the inventory sold during the last month by county.

Filters Used: MLS: Contra Costa Association of REALTORS®, Bay East Association of REALTORS®, and bridgeMLS; County: Alameda County, California, Contra Costa County, California



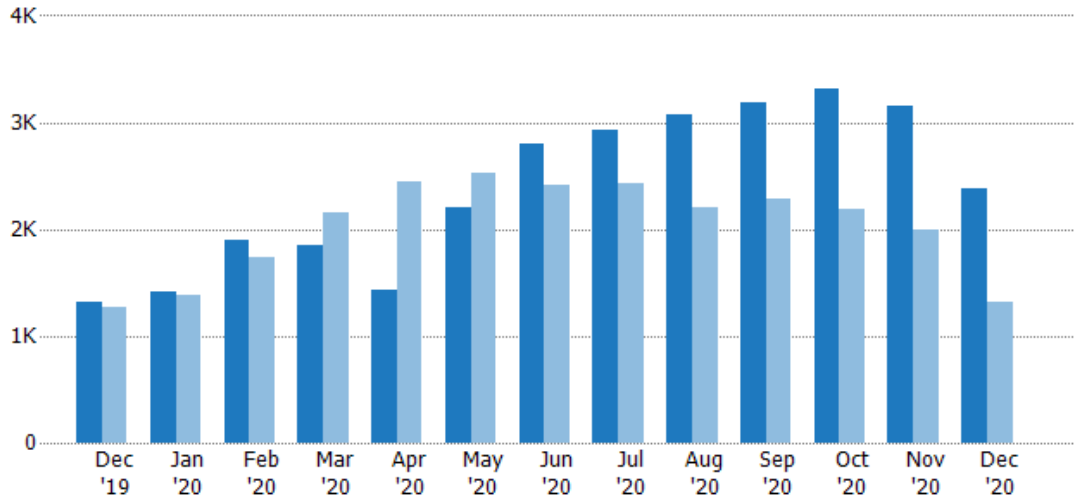
Pending Sales

The number of residential properties with accepted offers that were available at the end each month.

Filters Used

MLS: Contra Costa Association of REALTORS®, Bay East Association of REALTORS®, and bridgeMLS
County: Alameda County, California, Contra Costa County, California

Month/Year	Count	% Chg.
Dec '20	2.38K	81.8%
Dec '19	1.31K	3.6%
Dec '18	1.27K	17.8%



	Dec '19	Jan '20	Feb '20	Mar '20	Apr '20	May '20	Jun '20	Jul '20	Aug '20	Sep '20	Oct '20	Nov '20	Dec '20
Current Year	1.31K	1.42K	1.9K	1.86K	1.42K	2.2K	2.8K	2.93K	3.07K	3.19K	3.32K	3.16K	2.38K
Prior Year	1.27K	1.38K	1.73K	2.16K	2.45K	2.53K	2.41K	2.43K	2.2K	2.29K	2.18K	2K	1.31K
Percent Change from Prior Year	4%	3%	9%	-14%	-42%	-13%	16%	20%	40%	39%	52%	58%	82%

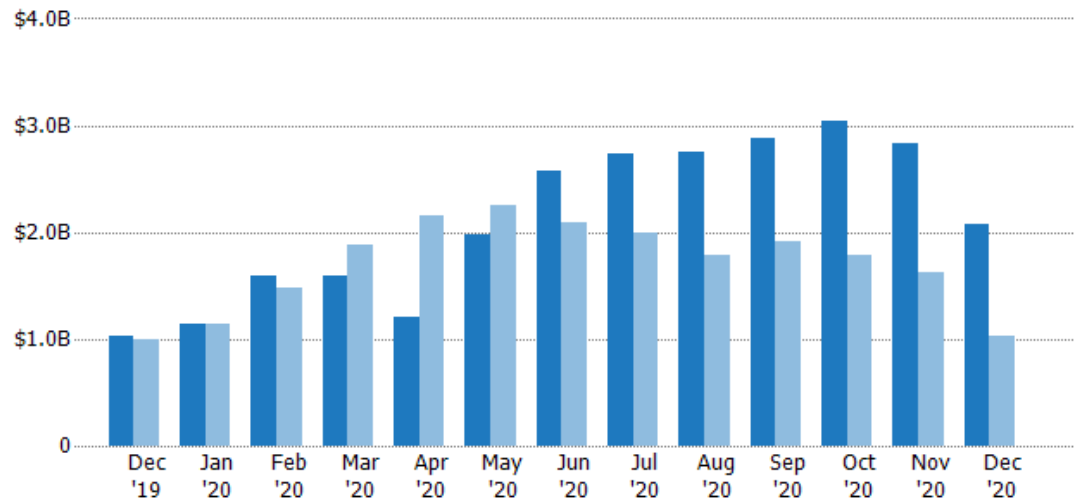
Pending Sales Volume

The sum of the sales price of residential properties with accepted offers that were available at the end of each month.

Filters Used

MLS: Contra Costa Association of REALTORS®, Bay East Association of REALTORS®, and bridgeMLS
County: Alameda County, California, Contra Costa County, California

Month/Year	Volume	% Chg.
Dec '20	\$2.08B	103.7%
Dec '19	\$1.02B	2.8%
Dec '18	\$994M	9.2%



	Dec '19	Jan '20	Feb '20	Mar '20	Apr '20	May '20	Jun '20	Jul '20	Aug '20	Sep '20	Oct '20	Nov '20	Dec '20
Current Year	\$1.02B	\$1.13B	\$1.59B	\$1.6B	\$1.2B	\$1.98B	\$2.58B	\$2.74B	\$2.75B	\$2.88B	\$3.04B	\$2.83B	\$2.08B
Prior Year	\$994M	\$1.13B	\$1.49B	\$1.89B	\$2.16B	\$2.26B	\$2.09B	\$2B	\$1.78B	\$1.91B	\$1.78B	\$1.62B	\$1.02B
Percent Change from Prior Year	3%	0%	7%	-15%	-44%	-12%	23%	37%	54%	51%	71%	75%	104%

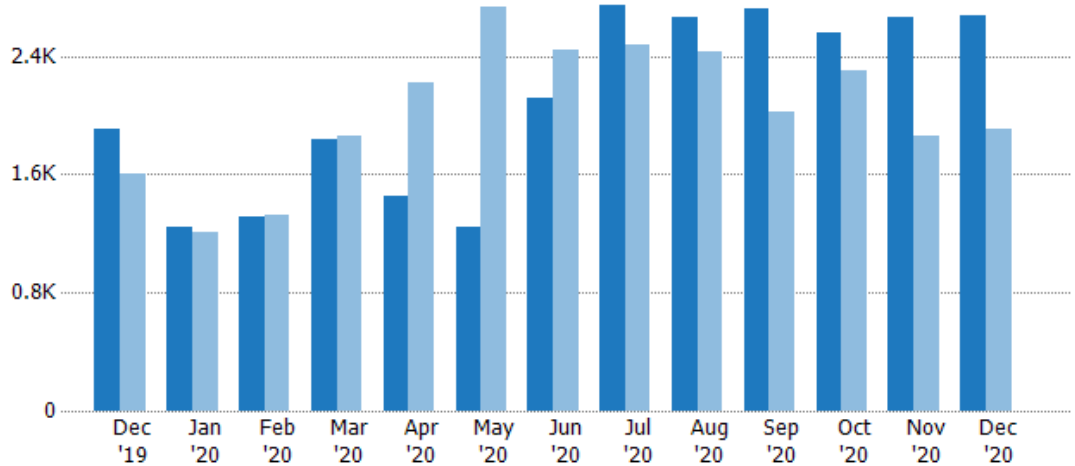
Closed Sales

The total number of residential properties sold each month.

Filters Used

MLS: Contra Costa Association of REALTORS®, Bay East Association of REALTORS®, and bridgeMLS
 County: Alameda County, California, Contra Costa County, California

Month/Year	Count	% Chg.
Dec '20	2.67K	40.3%
Dec '19	1.9K	18.8%
Dec '18	1.6K	21.4%



Current Year	1.9K	1.24K	1.31K	1.84K	1.46K	1.24K	2.11K	2.74K	2.66K	2.72K	2.55K	2.66K	2.67K
Prior Year	1.6K	1.21K	1.33K	1.86K	2.22K	2.73K	2.44K	2.47K	2.43K	2.03K	2.31K	1.86K	1.9K
Percent Change from Prior Year	19%	3%	-1%	-1%	-34%	-55%	-13%	11%	10%	34%	11%	43%	40%

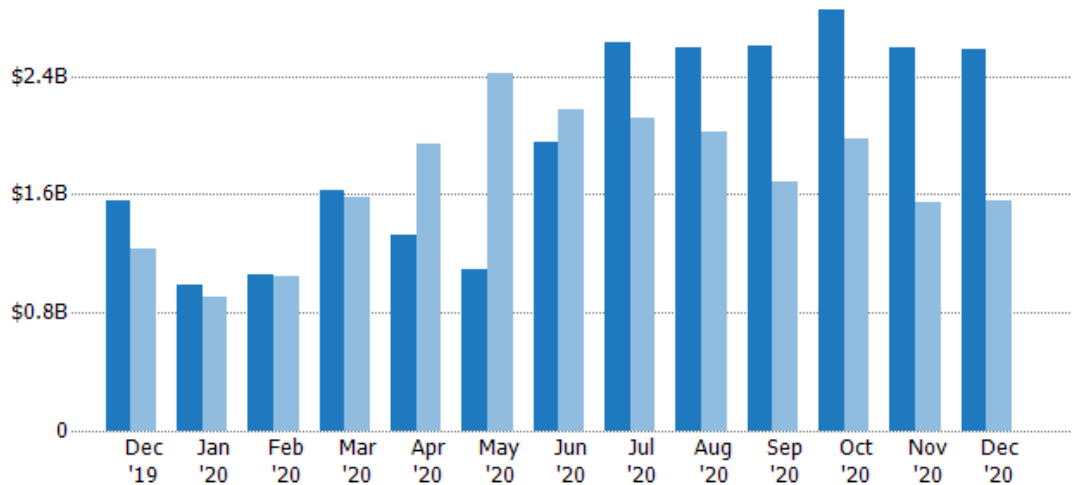
Closed Sales Volume

The sum of the sales price of residential properties sold each month.

Filters Used

MLS: Contra Costa Association of REALTORS®, Bay East Association of REALTORS®, and bridgeMLS
 County: Alameda County, California, Contra Costa County, California

Month/Year	Volume	% Chg.
Dec '20	\$2.59B	65.8%
Dec '19	\$1.56B	26.9%
Dec '18	\$1.23B	20.8%



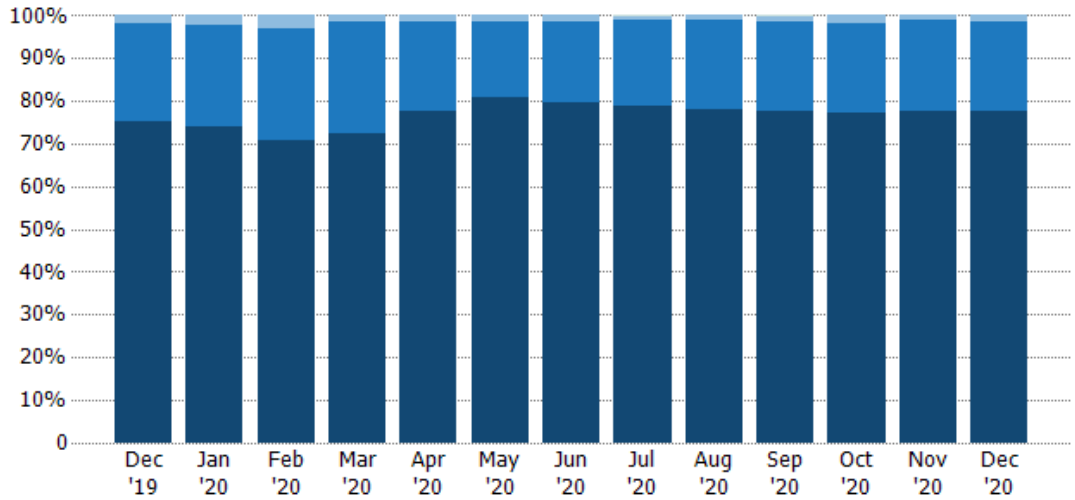
Current Year	\$1.56B	\$983M	\$1.06B	\$1.63B	\$1.32B	\$1.09B	\$1.95B	\$2.62B	\$2.59B	\$2.6B	\$2.85B	\$2.6B	\$2.59B
Prior Year	\$1.23B	\$902M	\$1.05B	\$1.58B	\$1.94B	\$2.42B	\$2.17B	\$2.11B	\$2.03B	\$1.69B	\$1.98B	\$1.54B	\$1.56B
Percent Change from Prior Year	27%	9%	1%	3%	-32%	-55%	-10%	24%	28%	54%	44%	68%	66%

Closed Sales by Property Type

The percentage of residential properties sold each month by property type.

Filters Used

MLS: Contra Costa Association of REALTORS®, Bay East Association of REALTORS®, and bridgeMLS
County: Alameda County, California, Contra Costa County, California

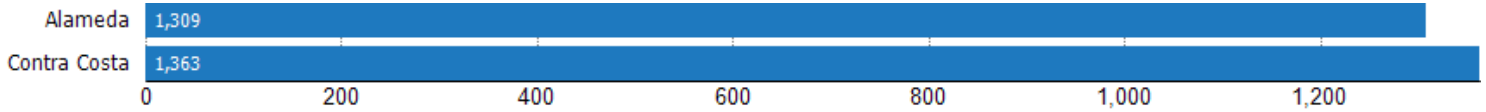


Property Type	Dec '19	Jan '20	Feb '20	Mar '20	Apr '20	May '20	Jun '20	Jul '20	Aug '20	Sep '20	Oct '20	Nov '20	Dec '20
Multifamily/Multiplex	-	-	-	-	-	-	-	0%	-	0%	-	-	-
Mobile/Manufactured	2%	2%	3%	2%	1%	2%	1%	1%	1%	1%	2%	1%	1%
Condo/Townhouse	23%	24%	26%	26%	21%	18%	19%	20%	21%	21%	21%	21%	21%
Single Family Residence	75%	74%	71%	72%	78%	81%	79%	79%	78%	78%	77%	78%	78%

Closed Sales (By County)

The total number of residential properties sold during the last month by county.

Filters Used: MLS: Contra Costa Association of REALTORS®, Bay East Association of REALTORS®, and bridgeMLS; County: Alameda County, California, Contra Costa County, California

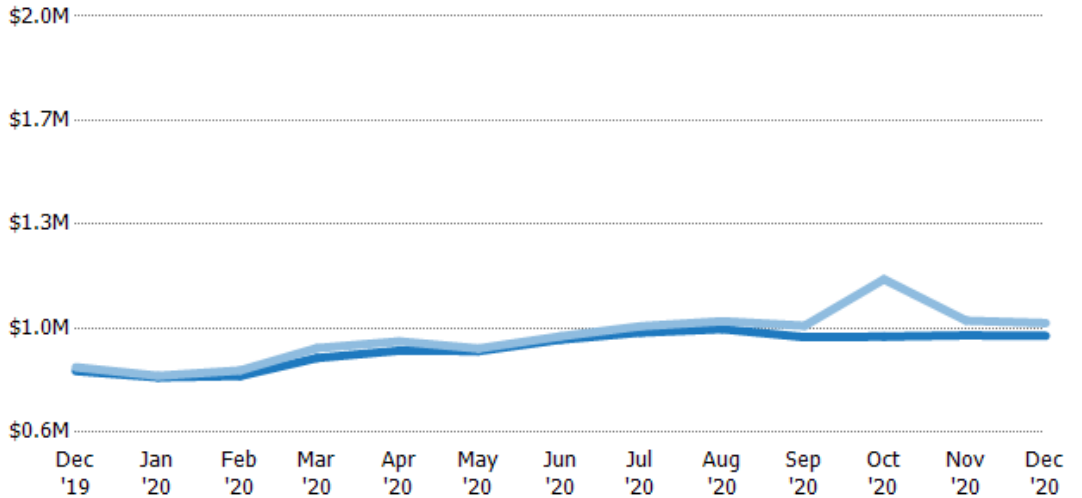


Average Sales Price vs Average Listing Price

The average sales price as a percentage of the average listing price for properties sold each month.

Filters Used

MLS: Contra Costa Association of REALTORS®, Bay East Association of REALTORS®, and bridgeMLS
County: Alameda County, California, Contra Costa County, California



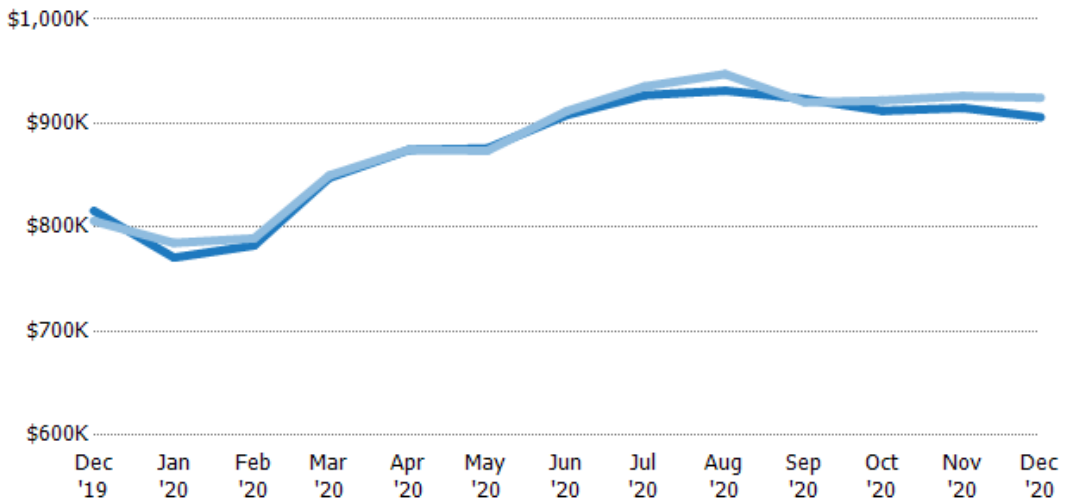
	Dec '19	Jan '20	Feb '20	Mar '20	Apr '20	May '20	Jun '20	Jul '20	Aug '20	Sep '20	Oct '20	Nov '20	Dec '20
Avg List Price	\$806K	\$785K	\$789K	\$850K	\$875K	\$873K	\$912K	\$935K	\$947K	\$920K	\$922K	\$926K	\$925K
Avg Sales Price	\$819K	\$790K	\$808K	\$883K	\$906K	\$882K	\$923K	\$957K	\$974K	\$958K	\$1.11M	\$976K	\$967K
Avg Sales Price as a % of Avg List Price	102%	101%	102%	104%	104%	101%	101%	102%	103%	104%	121%	105%	105%

Average Sales Price vs Average Est Value

The average sales price as a percentage of the average AVM or RVM® valuation estimate for properties sold each month.

Filters Used

MLS: Contra Costa Association of REALTORS®, Bay East Association of REALTORS®, and bridgeMLS
County: Alameda County, California, Contra Costa County, California



	Dec '19	Jan '20	Feb '20	Mar '20	Apr '20	May '20	Jun '20	Jul '20	Aug '20	Sep '20	Oct '20	Nov '20	Dec '20
Avg Est Value	\$816K	\$771K	\$783K	\$848K	\$875K	\$876K	\$908K	\$927K	\$931K	\$923K	\$912K	\$915K	\$906K
Avg Sales Price	\$806K	\$785K	\$789K	\$850K	\$875K	\$873K	\$912K	\$935K	\$947K	\$920K	\$922K	\$926K	\$925K
Avg Sales Price as a % of Avg Est Value	99%	102%	101%	100%	100%	100%	100%	101%	102%	100%	101%	101%	102%

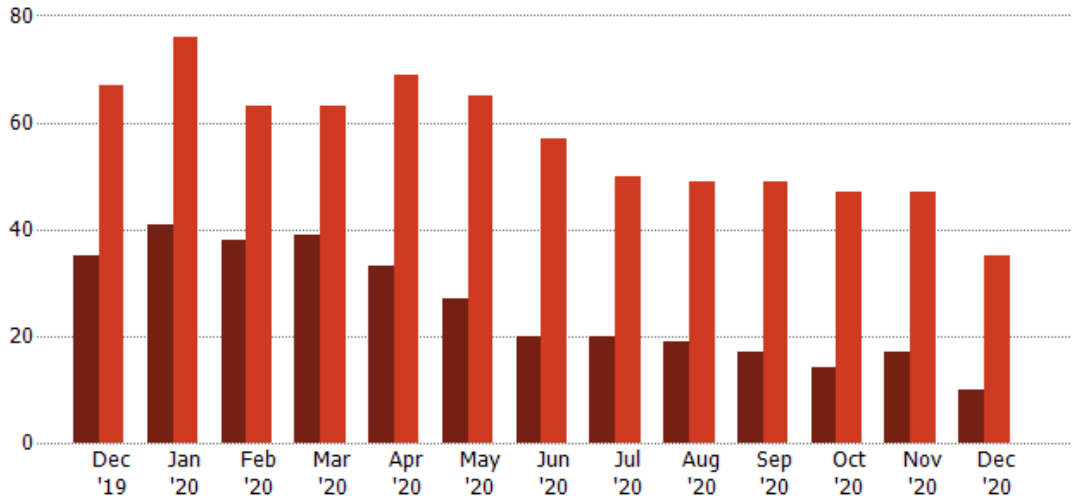
Distressed Listings

The number of distressed residential properties that were for sale at the end of each month.

Filters Used

MLS: Contra Costa Association of REALTORS®, Bay East Association of REALTORS®, and bridgeMLS
County: Alameda County, California, Contra Costa County, California

Month/Year	Count	% Chg.
Dec '20	10	-71.4%
Dec '19	35	-47.8%
Dec '18	67	-17.9%



Current Year	35	41	38	39	33	27	20	20	19	17	14	17	10
Prior Year	67	76	63	63	69	65	57	50	49	49	47	47	35
Percent Change from Prior Year	-48%	-46%	-40%	-38%	-52%	-58%	-65%	-60%	-61%	-65%	-70%	-64%	-71%

Distressed Listings (By County)

The number of distressed single-family, condominium and townhome properties that were for sale at the end of the last month by county.

Filters Used: MLS: Contra Costa Association of REALTORS®, Bay East Association of REALTORS®, and bridgeMLS; County: Alameda County, California, Contra Costa County, California



Appendix

The metrics that are calculated by RPR® may show the same general trends as those published by other sources (i.e. MLS, Associations or vendors), but because of our processes and parcel-centric approach, some variation may occur. Data sources include MLS's, where licensed, and public records for more in-depth metrics on distressed properties.

Report Details

Report Name: Monthly Market Data Report

Run Date: 01/05/2021

Scheduled: Yes

Report Date Range: From 12/2019 To: 12/2020

Information Included

- | | |
|--|--|
| <input checked="" type="checkbox"/> Include Cover Sheet | <input checked="" type="checkbox"/> Averages |
| <input type="checkbox"/> Include Key Metric Summary | <input checked="" type="checkbox"/> Include Appendix |
| <input checked="" type="checkbox"/> Include Metrics By: County | <input type="checkbox"/> Medians |

Listing Filters

Property Types: All

Sales Types: All

Price Range: None

Location Filters

State: All

County: Alameda County, California Contra Costa County, California

ZIP Code: All

Listing Activity Charts

- New Listings
- Active Listings
- Average Listing Price
- Average Listing Price per Sq Ft
- Average Listing Price vs Est Value
- Median Days in RPR
- Months of Inventory
- Absorption Rate

Sales Activity Charts

- Active/Pending/Sold
- New Pending Sales
- Pending Sales
- Closed Sales
- Average Sales Price
- Average Sales Price per Sq Ft
- Average Sales Price vs Listing Price
- Average Sales Price vs Est Value

Distressed Charts

- Distressed Listings
- Distressed Sales

Data Tables Using 12/2020 data

- Listing Activity by ZIP
- Listing Activity by Metro Area
- Sales Activity by ZIP
- Sales Activity by Metro Area