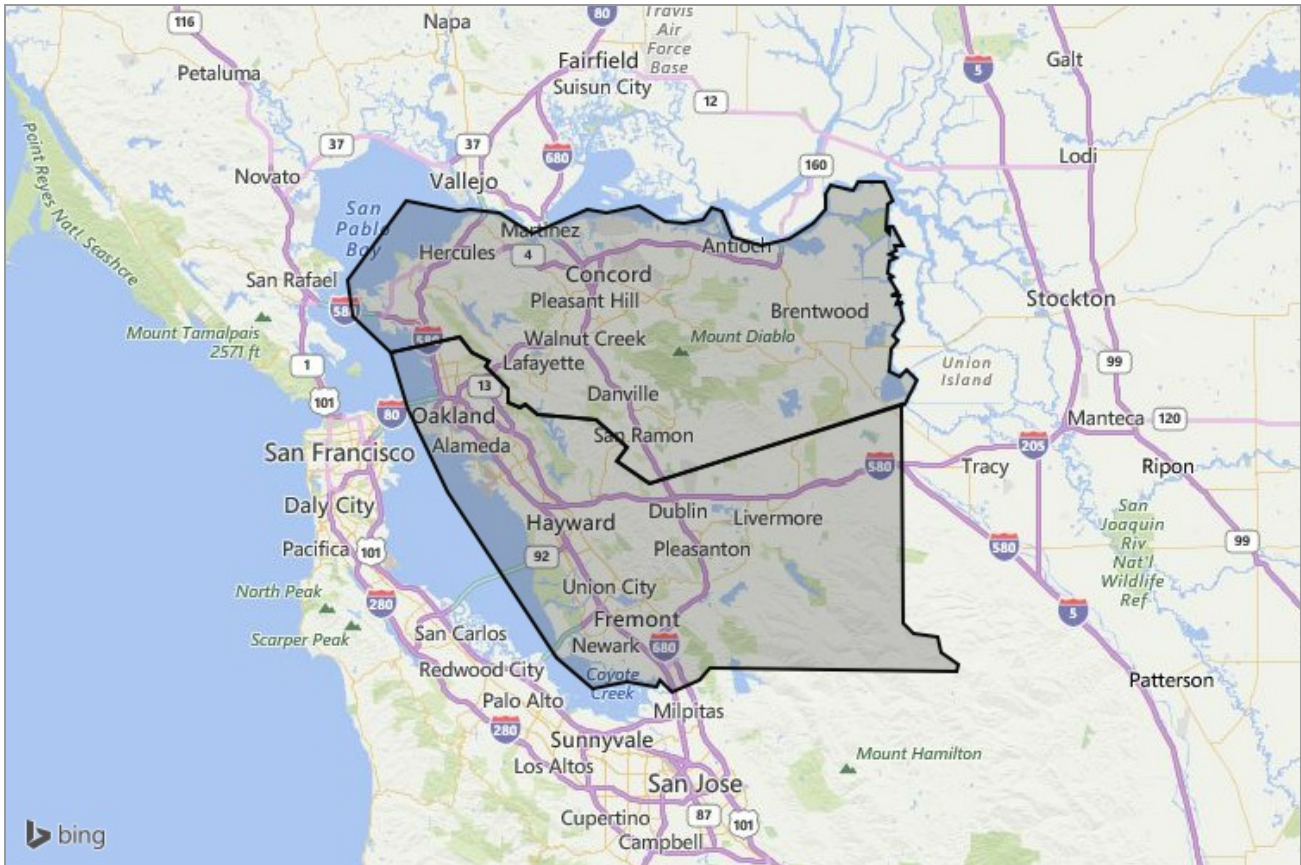


MARKET DATA REPORT

Monthly Market Data Report



Report Characteristics

Report Name:
Monthly Market Data Report

Report Date Range:
2/2016 – 2/2017

Filters Used:
Location

Avg/Med: Avg Only

Include Metrics By: County

Run Date: 03/08/2017

Scheduled: Yes

Presented by

Contra Costa Association of
REALTORS®, Bay East Association of
REALTORS®, and EBRDi MLS

925.207.6446

www.ccartoday.com, www.bayeast.org, www.ebrdi.com

7901 Stoneridge Drive
Pleasanton, CA 94588

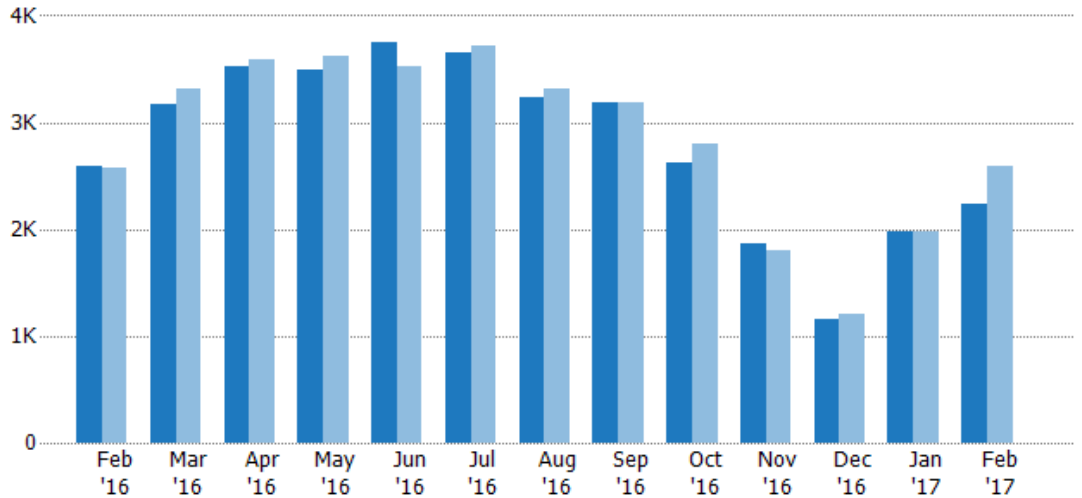
New Listings

The number of new single-family, condominium and townhome listings that were added each month.

Filters Used

MLS: Contra Costa Association of REALTORS®, Bay East Association of REALTORS®, and EBRDi MLS
County: Alameda County, California, Contra Costa County, California

Month/Year	Count	% Chg.
Feb '17	2.23K	-13.8%
Feb '16	2.59K	0.2%
Feb '15	2.58K	-1.6%



Current Year	2.59K	3.18K	3.53K	3.49K	3.74K	3.66K	3.23K	3.18K	2.62K	1.87K	1.16K	1.97K	2.23K
Prior Year	2.58K	3.31K	3.58K	3.63K	3.52K	3.72K	3.31K	3.19K	2.8K	1.8K	1.2K	1.98K	2.59K
Percent Change from Prior Year	0	-4%	-2%	-4%	6%	-2%	-3%	0	-6%	4%	-3%	0	-14%

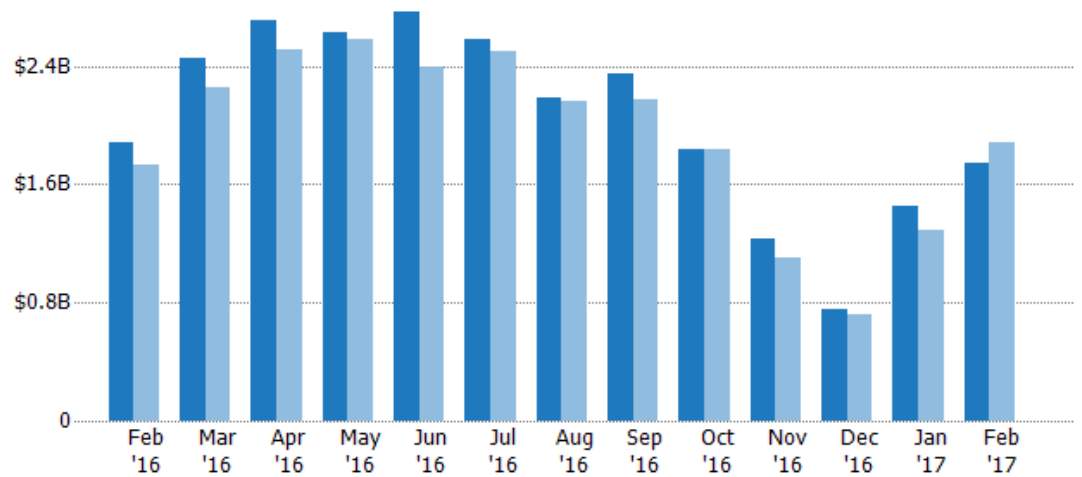
New Listing Volume

The sum of the listing price of single-family, condominium and townhome listings that were added each month.

Filters Used

MLS: Contra Costa Association of REALTORS®, Bay East Association of REALTORS®, and EBRDi MLS
County: Alameda County, California, Contra Costa County, California

Month/Year	Volume	% Chg.
Feb '17	\$1.74B	-7.8%
Feb '16	\$1.89B	8.7%
Feb '15	\$1.73B	-12.6%



Current Year	\$1.89B	\$2.45B	\$2.71B	\$2.63B	\$2.76B	\$2.58B	\$2.18B	\$2.35B	\$1.84B	\$1.24B	\$755M	\$1.46B	\$1.74B
Prior Year	\$1.73B	\$2.25B	\$2.51B	\$2.58B	\$2.4B	\$2.5B	\$2.16B	\$2.18B	\$1.84B	\$1.11B	\$714M	\$1.29B	\$1.89B
Percent Change from Prior Year	9%	9%	8%	2%	15%	3%	1%	8%	0	12%	6%	13%	-8%

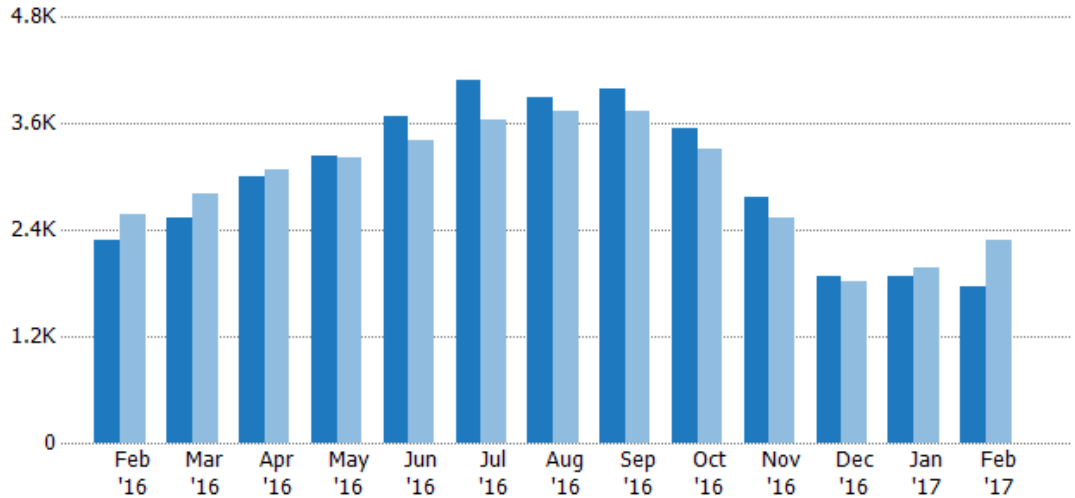
Active Listings

The number of active single-family, condominium and townhome listings at the end of each month.

Filters Used

MLS: Contra Costa Association of REALTORS®, Bay East Association of REALTORS®, and EBRDi MLS
County: Alameda County, California, Contra Costa County, California

Month/Year	Count	% Chg.
Feb '17	1.75K	-23.1%
Feb '16	2.28K	-11.4%
Feb '15	2.57K	12.9%



Current Year	2.28K	2.53K	2.99K	3.24K	3.68K	4.09K	3.9K	3.98K	3.54K	2.78K	1.87K	1.88K	1.75K
Prior Year	2.57K	2.81K	3.09K	3.22K	3.41K	3.64K	3.73K	3.74K	3.31K	2.54K	1.82K	1.98K	2.28K
Percent Change from Prior Year	-11%	-10%	-3%	1%	8%	12%	4%	6%	7%	10%	3%	-5%	-23%

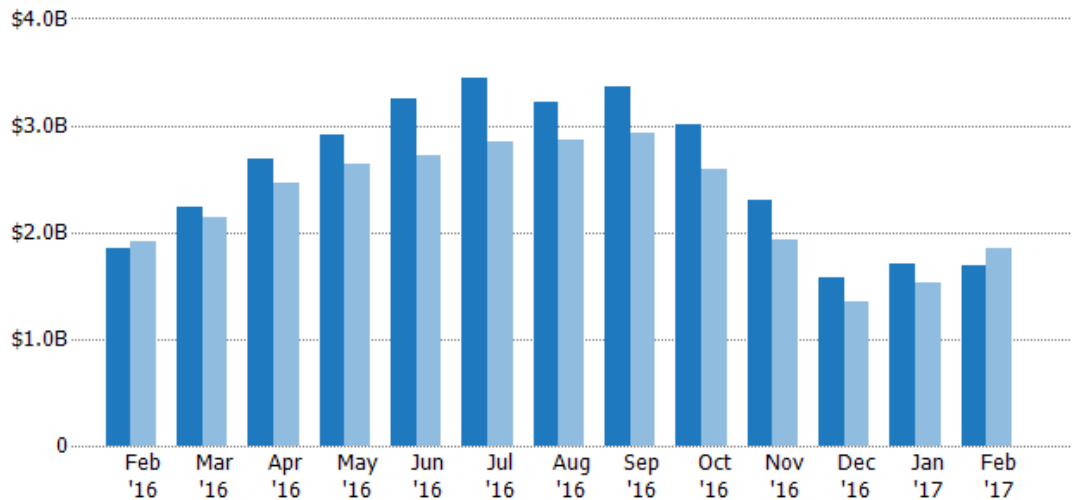
Active Listing Volume

The sum of the listing price of active single-family, condominium and townhome listings at the end of each month.

Filters Used

MLS: Contra Costa Association of REALTORS®, Bay East Association of REALTORS®, and EBRDi MLS
County: Alameda County, California, Contra Costa County, California

Month/Year	Volume	% Chg.
Feb '17	\$1.69B	-8.7%
Feb '16	\$1.85B	-3.2%
Feb '15	\$1.91B	0.9%



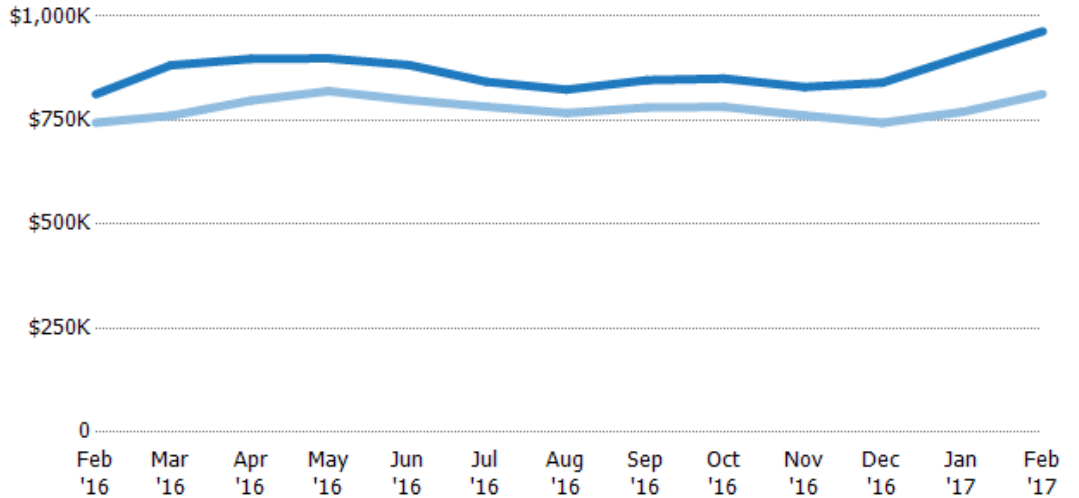
Current Year	\$1.85B	\$2.23B	\$2.69B	\$2.91B	\$3.25B	\$3.45B	\$3.21B	\$3.37B	\$3.01B	\$2.3B	\$1.57B	\$1.7B	\$1.69B
Prior Year	\$1.91B	\$2.13B	\$2.46B	\$2.64B	\$2.72B	\$2.85B	\$2.86B	\$2.92B	\$2.59B	\$1.93B	\$1.35B	\$1.53B	\$1.85B
Percent Change from Prior Year	-3%	5%	9%	10%	19%	21%	12%	15%	17%	19%	17%	11%	-9%

Average Listing Price

The average listing price of active single-family, condominium and townhome listings at the end of each month.

Filters Used

MLS: Contra Costa Association of REALTORS®, Bay East Association of REALTORS®, and EBRDi MLS
County: Alameda County, California, Contra Costa County, California



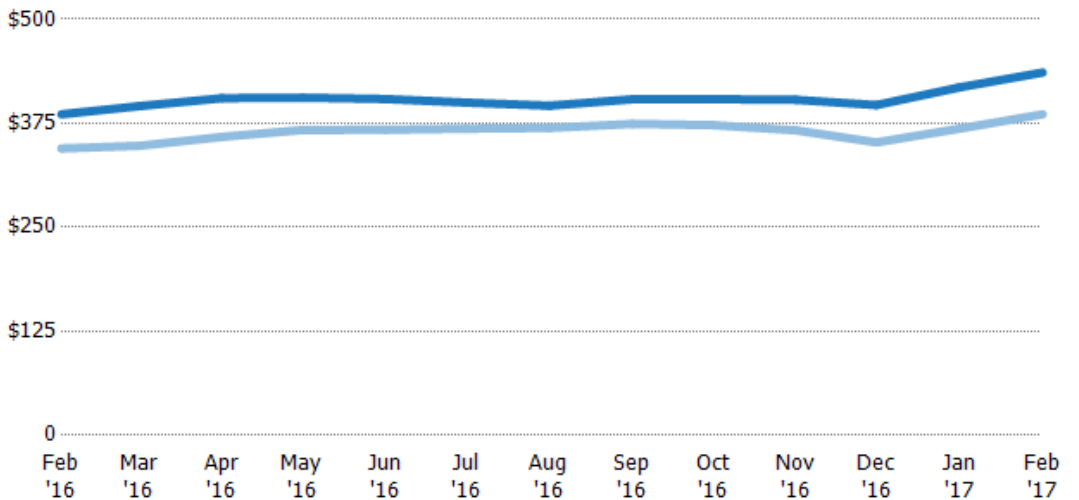
Month/Year	Current Year Price	Prior Year Price	Percent Change from Prior Year
Feb '16	\$813K	\$744K	9%
Mar '16	\$882K	\$761K	16%
Apr '16	\$898K	\$797K	13%
May '16	\$899K	\$820K	10%
Jun '16	\$883K	\$799K	11%
Jul '16	\$843K	\$783K	8%
Aug '16	\$824K	\$768K	7%
Sep '16	\$846K	\$781K	8%
Oct '16	\$850K	\$782K	9%
Nov '16	\$830K	\$762K	9%
Dec '16	\$840K	\$744K	13%
Jan '17	\$903K	\$770K	17%
Feb '17	\$964K	\$813K	19%

Average Listing Price per Sq Ft

The average of listing prices divided by the living area of homes on market at the end of each month.

Filters Used

MLS: Contra Costa Association of REALTORS®, Bay East Association of REALTORS®, and EBRDi MLS
County: Alameda County, California, Contra Costa County, California



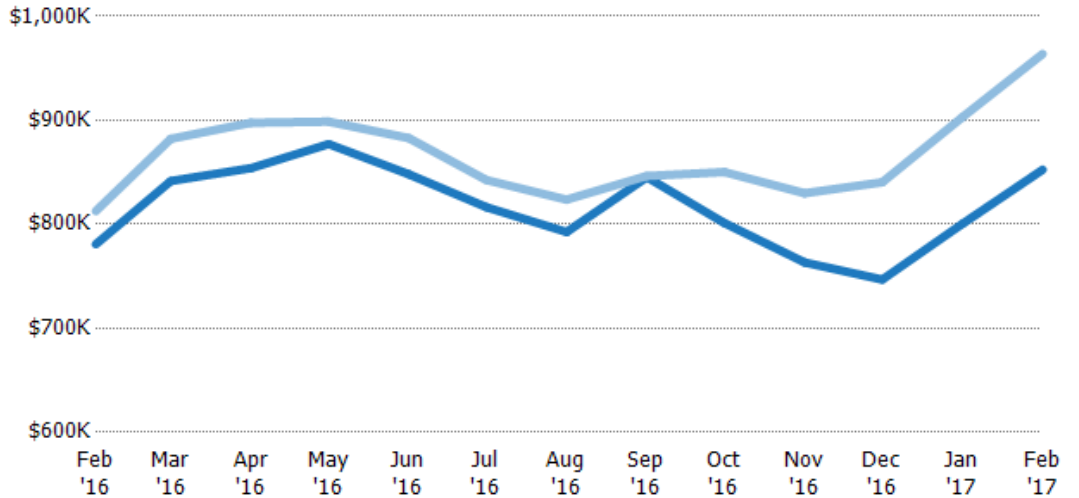
Month/Year	Current Year Price/sq ft	Prior Year Price/sq ft	Percent Change from Prior Year
Feb '16	\$386	\$345	12%
Mar '16	\$396	\$348	14%
Apr '16	\$405	\$359	13%
May '16	\$406	\$367	11%
Jun '16	\$404	\$367	10%
Jul '16	\$400	\$368	9%
Aug '16	\$396	\$369	7%
Sep '16	\$404	\$374	8%
Oct '16	\$404	\$373	8%
Nov '16	\$403	\$366	10%
Dec '16	\$397	\$352	13%
Jan '17	\$418	\$369	13%
Feb '17	\$436	\$386	13%

Average Listing Price vs Average Est Value

The average listing price as a percentage of the average AVM or RVM® valuation estimate for active listings each month.

Filters Used

MLS: Contra Costa Association of REALTORS®, Bay East Association of REALTORS®, and EBRDi MLS
County: Alameda County, California, Contra Costa County, California



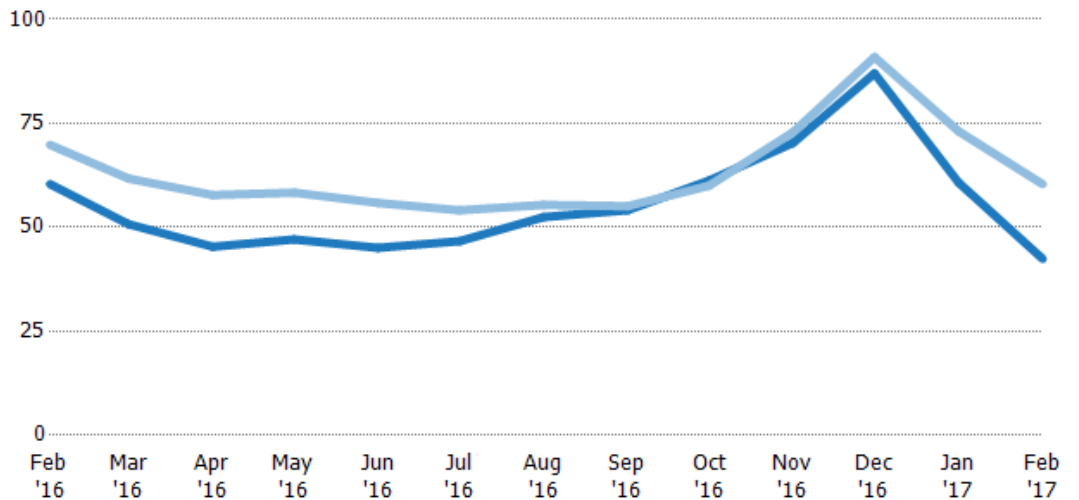
Avg Est Value	\$781K	\$842K	\$854K	\$877K	\$848K	\$816K	\$793K	\$845K	\$801K	\$763K	\$747K	\$800K	\$852K
Avg Listing Price	\$813K	\$882K	\$898K	\$899K	\$883K	\$843K	\$824K	\$846K	\$850K	\$830K	\$840K	\$903K	\$964K
Avg Listing Price as a % of Avg Est Value	104%	105%	105%	102%	104%	103%	104%	100%	106%	109%	113%	113%	113%

Average Days in RPR

The average number of days between when residential properties are first displayed as active listings in RPR and when accepted offers have been noted in RPR.

Filters Used

MLS: Contra Costa Association of REALTORS®, Bay East Association of REALTORS®, and EBRDi MLS
County: Alameda County, California, Contra Costa County, California



Month/Year	Days	% Chg.
Feb '17	42.4	-29.8%
Feb '16	60.4	-13.5%
Feb '15	69.8	4.9%

Current Year	60.4	50.7	45.3	47.1	45.1	46.7	52.5	54.1	61.2	70.3	87	60.7	42.4
Prior Year	69.8	61.7	57.7	58.3	55.8	54.1	55.4	55.1	60	72.9	90.9	73.1	60.4
Percent Change from Prior Year	-14%	-18%	-22%	-19%	-19%	-14%	-5%	-2%	2%	-4%	-4%	-17%	-30%

Average Days in RPR (By County)

The average number of days between when residential properties are first displayed as active listings in RPR and when accepted offers have been noted in RPR by county.

Filters Used: MLS: Contra Costa Association of REALTORS®, Bay East Association of REALTORS®, and EBRDi MLS; County: Alameda County, California, Contra Costa County, California



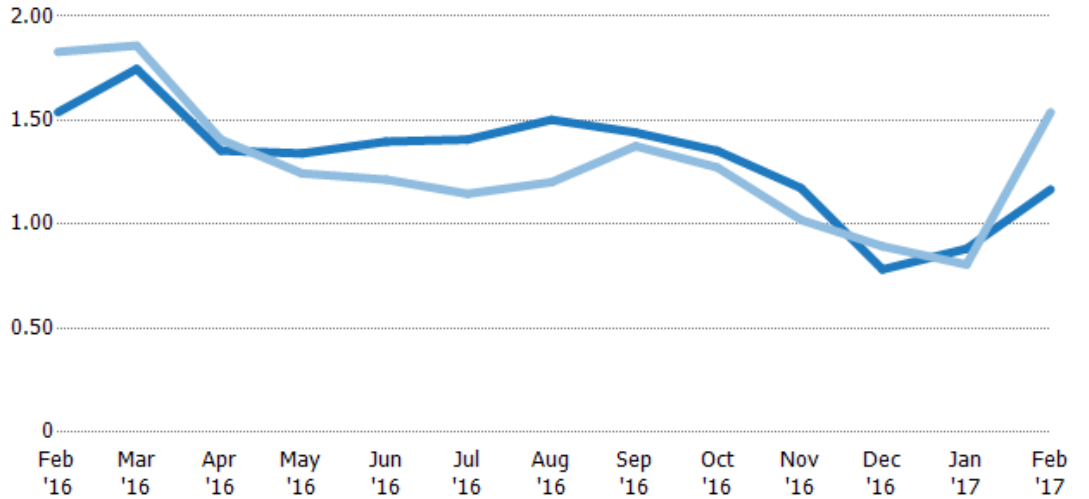
Months of Inventory

The number of months it would take to exhaust active listings at the current sales rate.

Filters Used

MLS: Contra Costa Association of REALTORS®, Bay East Association of REALTORS®, and EBRDi MLS
County: Alameda County, California, Contra Costa County, California

Month/Year	Months	% Chg.
Feb '17	1.17	-24.1%
Feb '16	1.54	-15.9%
Feb '15	1.83	6.9%



	Feb '16	Mar '16	Apr '16	May '16	Jun '16	Jul '16	Aug '16	Sep '16	Oct '16	Nov '16	Dec '16	Jan '17	Feb '17
Current Year	1.54	1.75	1.35	1.34	1.4	1.41	1.5	1.44	1.35	1.17	0.78	0.88	1.17
Prior Year	1.83	1.86	1.41	1.24	1.21	1.15	1.2	1.38	1.27	1.02	0.89	0.81	1.54
Percent Change from Prior Year	-16%	-6%	-4%	8%	15%	23%	25%	5%	6%	15%	-12%	9%	-24%

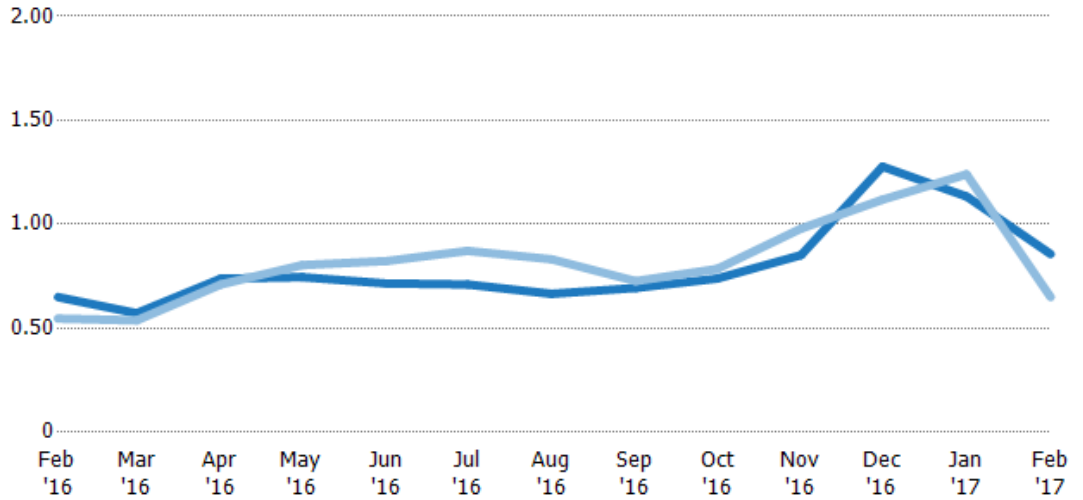
Absorption Rate

The percentage of inventory sold per month.

Filters Used

MLS: Contra Costa Association of REALTORS®, Bay East Association of REALTORS®, and EBRDi MLS
County: Alameda County, California, Contra Costa County, California

Month/Year	Rate	Chg.
Feb '17	86%	-20.7%
Feb '16	65%	-10.3%
Feb '15	55%	-6.4%

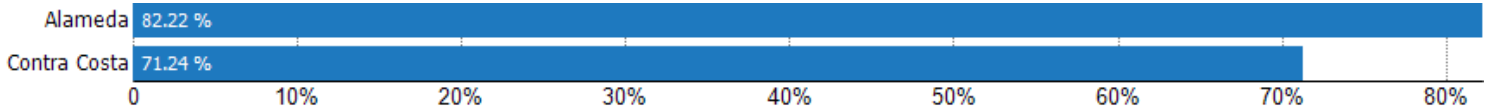


Current Year	65%	57%	74%	75%	72%	71%	67%	69%	74%	85%	128%	113%	86%
Prior Year	55%	54%	71%	80%	82%	87%	83%	73%	79%	98%	112%	124%	65%
Change from Prior Year	-10%	-3%	-3%	6%	11%	16%	17%	3%	5%	13%	-16%	11%	-21%

Absorption Rate (By County)

The percentage of the inventory sold during the last month by county.

Filters Used: MLS: Contra Costa Association of REALTORS®, Bay East Association of REALTORS®, and EBRDi MLS; County: Alameda County, California, Contra Costa County, California



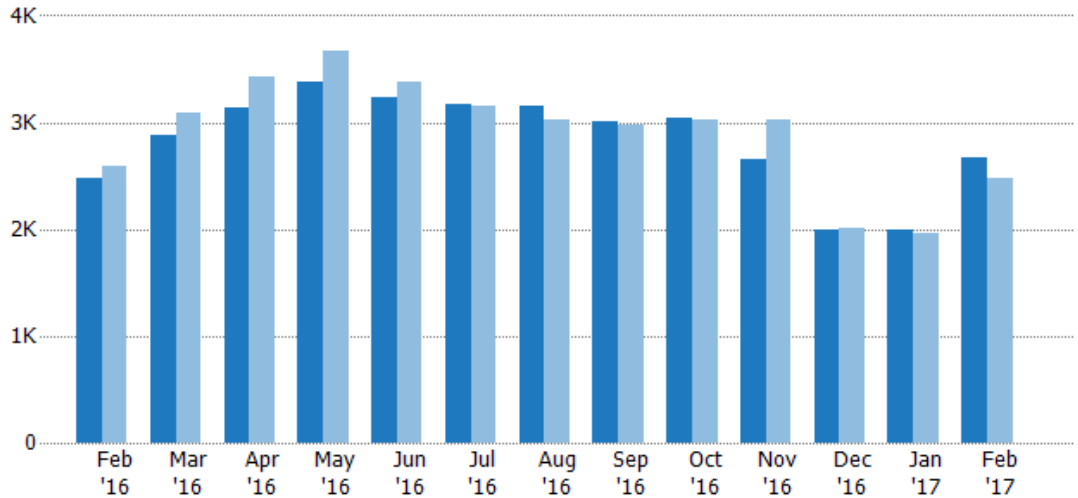
Pending Sales

The number of single-family, condominium and townhome properties with accepted offers that were available at the end each month.

Filters Used

MLS: Contra Costa Association of REALTORS®, Bay East Association of REALTORS®, and EBRDi MLS
County: Alameda County, California, Contra Costa County, California

Month/Year	Count	% Chg.
Feb '17	2.67K	8.2%
Feb '16	2.47K	-4.8%
Feb '15	2.59K	-7.5%



Current Year	2.47K	2.87K	3.14K	3.38K	3.24K	3.17K	3.16K	3.02K	3.04K	2.66K	2K	2K	2.67K
Prior Year	2.59K	3.09K	3.43K	3.67K	3.37K	3.15K	3.03K	2.97K	3.03K	3.02K	2.01K	1.96K	2.47K
Percent Change from Prior Year	-5%	-7%	-8%	-8%	-4%	0	4%	2%	0	-12%	0	2%	8%

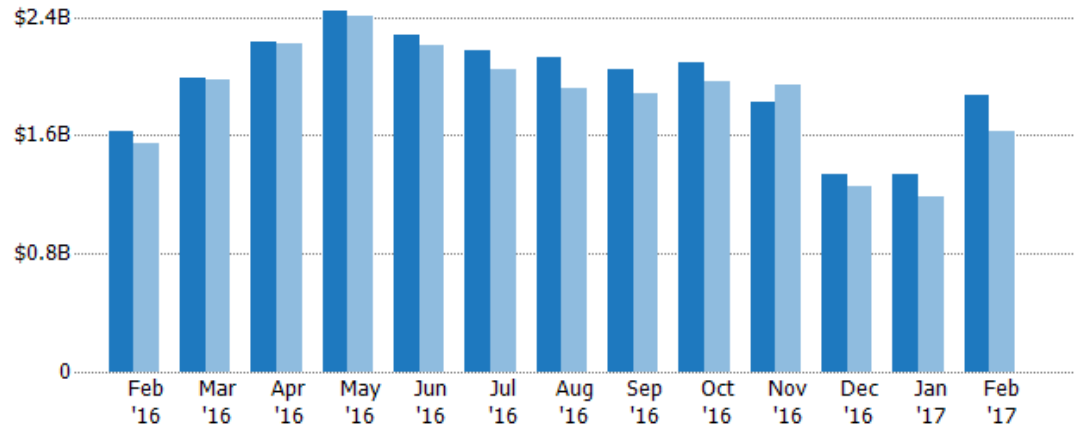
Pending Sales Volume

The sum of the sales price of single-family, condominium and townhome properties with accepted offers that were available at the end of each month.

Filters Used

MLS: Contra Costa Association of REALTORS®, Bay East Association of REALTORS®, and EBRDi MLS
County: Alameda County, California, Contra Costa County, California

Month/Year	Volume	% Chg.
Feb '17	\$1.87B	15.5%
Feb '16	\$1.62B	5%
Feb '15	\$1.55B	-14.9%



Current Year	\$1.62B	\$1.99B	\$2.23B	\$2.44B	\$2.28B	\$2.17B	\$2.12B	\$2.05B	\$2.09B	\$1.82B	\$1.34B	\$1.33B	\$1.87B
Prior Year	\$1.55B	\$1.97B	\$2.22B	\$2.41B	\$2.21B	\$2.04B	\$1.92B	\$1.88B	\$1.96B	\$1.94B	\$1.26B	\$1.18B	\$1.62B
Percent Change from Prior Year	5%	1%	1%	1%	3%	6%	11%	9%	7%	-6%	6%	13%	16%

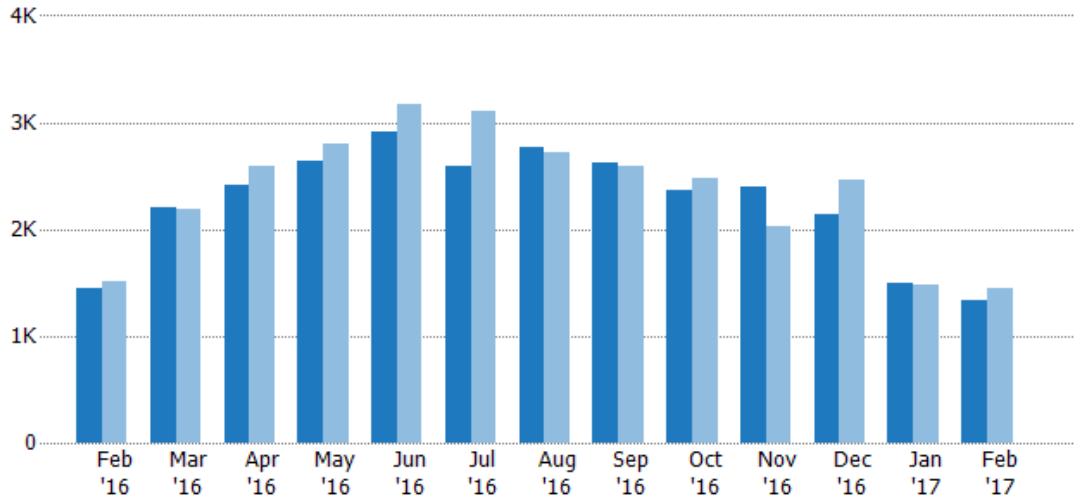
Closed Sales

The total number of single-family, condominium and townhome properties sold each month.

Filters Used

MLS: Contra Costa Association of REALTORS®, Bay East Association of REALTORS®, and EBRDi MLS
County: Alameda County, California, Contra Costa County, California

Month/Year	Count	% Chg.
Feb '17	1.34K	-7.9%
Feb '16	1.45K	-3.9%
Feb '15	1.51K	0.5%



Current Year	1.45K	2.21K	2.42K	2.63K	2.91K	2.59K	2.76K	2.62K	2.37K	2.39K	2.14K	1.5K	1.34K
Prior Year	1.51K	2.2K	2.58K	2.81K	3.18K	3.1K	2.72K	2.6K	2.48K	2.03K	2.46K	1.48K	1.45K
Percent Change from Prior Year	-4%	1%	-6%	-6%	-8%	-16%	2%	1%	-5%	18%	-13%	1%	-8%

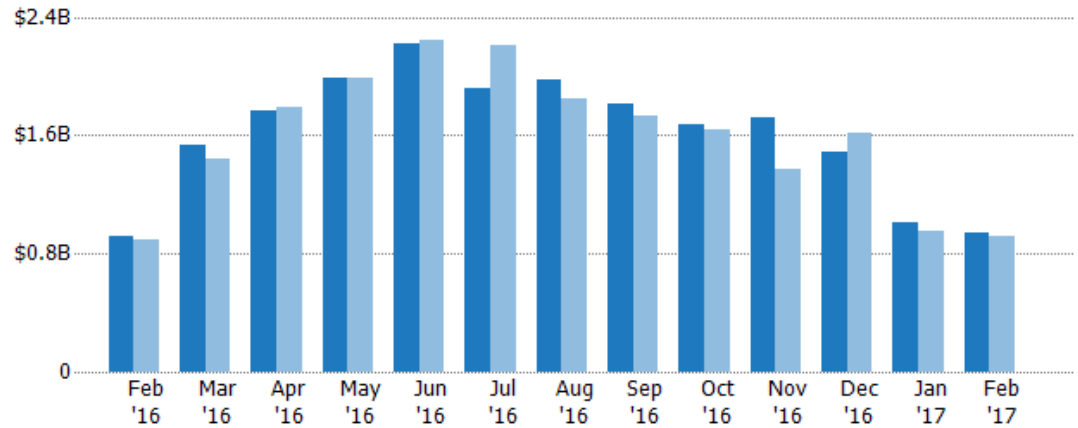
Closed Sales Volume

The sum of the sales price of single-family, condominium and townhome properties sold each month.

Filters Used

MLS: Contra Costa Association of REALTORS®, Bay East Association of REALTORS®, and EBRDi MLS
County: Alameda County, California, Contra Costa County, California

Month/Year	Volume	% Chg.
Feb '17	\$942M	2.3%
Feb '16	\$921M	2.5%
Feb '15	\$898M	-9.5%



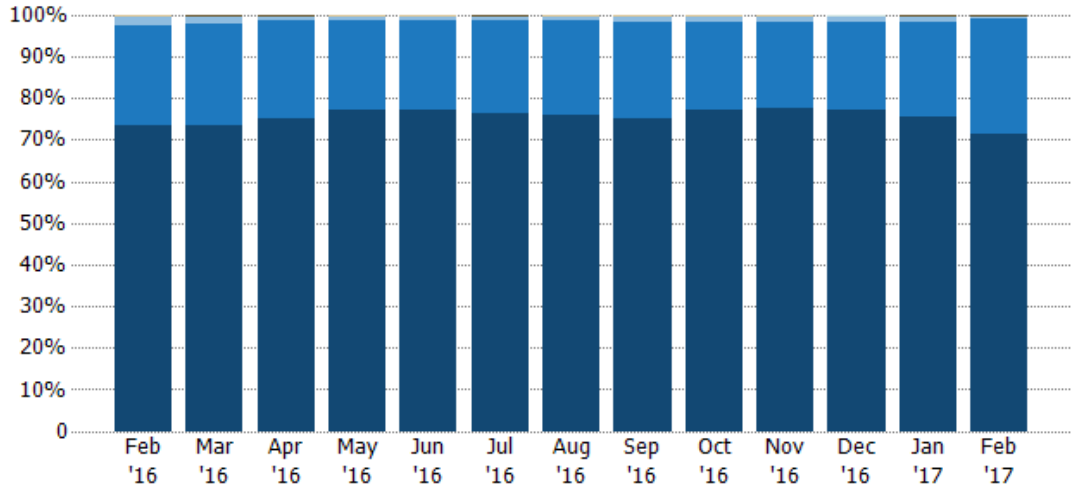
Current Year	\$921M	\$1.53B	\$1.77B	\$1.99B	\$2.22B	\$1.92B	\$1.97B	\$1.81B	\$1.68B	\$1.72B	\$1.49B	\$1.01B	\$942M
Prior Year	\$898M	\$1.44B	\$1.79B	\$1.99B	\$2.24B	\$2.21B	\$1.85B	\$1.73B	\$1.64B	\$1.37B	\$1.62B	\$957M	\$921M
Percent Change from Prior Year	2%	7%	-1%	0	-1%	-13%	7%	5%	2%	26%	-8%	6%	2%

Closed Sales by Property Type

The percentage of single-family, condominium and townhome properties sold each month by property type.

Filters Used

MLS: Contra Costa Association of REALTORS®, Bay East Association of REALTORS®, and EBRDi MLS
County: Alameda County, California, Contra Costa County, California

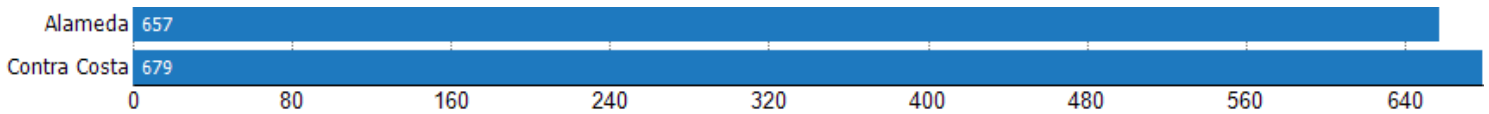


Property Type	Feb '16	Mar '16	Apr '16	May '16	Jun '16	Jul '16	Aug '16	Sep '16	Oct '16	Nov '16	Dec '16	Jan '17	Feb '17
Other	0	-	-	0	0	-	0	0	0	0	-	-	-
Farm/Ranch	-	-	-	-	-	-	-	-	-	0	-	-	-
Lot/Land	-	0	0	0	-	0	0	0	0	-	-	0	0
Multifamily/Multiplex	0	0	0	0	0	0	0	0	0	0	0	0	-
Mobile/Manufactured	2%	2%	1%	1%	1%	1%	1%	1%	1%	1%	1%	1%	1%
Condo/Townhouse	24%	24%	23%	21%	21%	22%	23%	23%	21%	21%	21%	23%	28%
Single Family Residence	73%	73%	75%	77%	77%	77%	76%	75%	77%	78%	77%	75%	71%

Closed Sales (By County)

The total number of single-family, condominium and townhome properties sold during the last month by county.

Filters Used: MLS: Contra Costa Association of REALTORS®, Bay East Association of REALTORS®, and EBRDi MLS; County: Alameda County, California, Contra Costa County, California

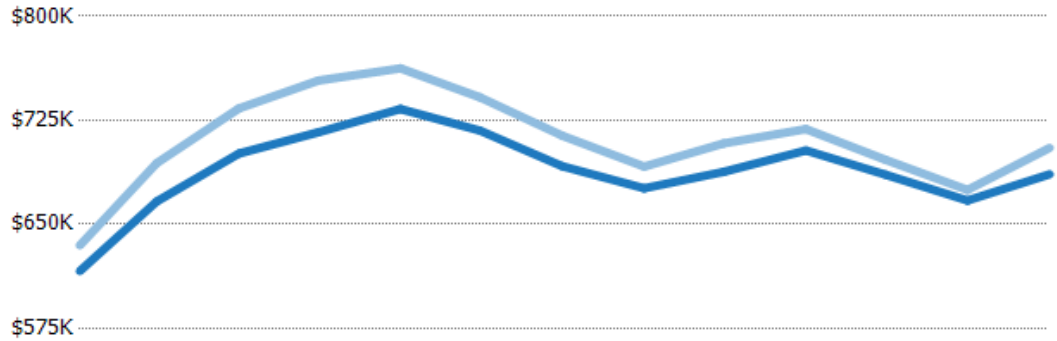


Average Sales Price vs Average Listing Price

The average sales price as a percentage of the average listing price for properties sold each month.

Filters Used

MLS: Contra Costa Association of REALTORS®, Bay East Association of REALTORS®, and EBRDi MLS
County: Alameda County, California, Contra Costa County, California



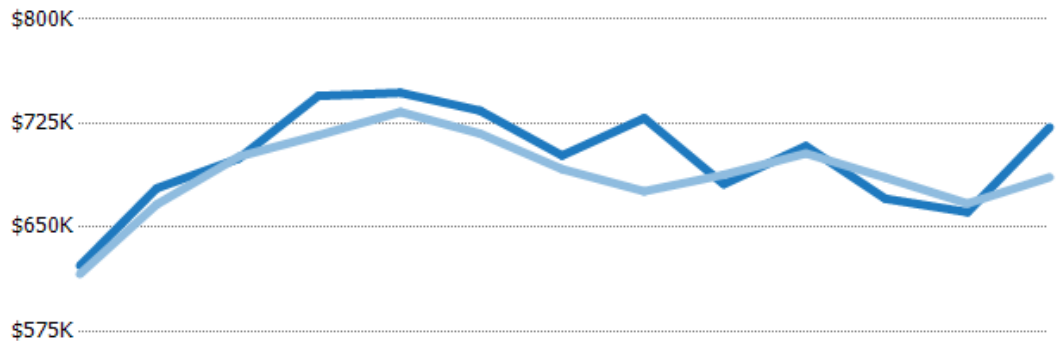
	Feb '16	Mar '16	Apr '16	May '16	Jun '16	Jul '16	Aug '16	Sep '16	Oct '16	Nov '16	Dec '16	Jan '17	Feb '17
Avg List Price	\$616K	\$666K	\$701K	\$716K	\$733K	\$718K	\$692K	\$676K	\$688K	\$703K	\$686K	\$667K	\$686K
Avg Sales Price	\$635K	\$694K	\$734K	\$754K	\$762K	\$742K	\$714K	\$692K	\$708K	\$719K	\$697K	\$675K	\$705K
Avg Sales Price as a % of Avg List Price	103%	104%	105%	105%	104%	103%	103%	102%	103%	102%	102%	101%	103%

Average Sales Price vs Average Est Value

The average sales price as a percentage of the average AVM or RVM® valuation estimate for properties sold each month.

Filters Used

MLS: Contra Costa Association of REALTORS®, Bay East Association of REALTORS®, and EBRDi MLS
County: Alameda County, California, Contra Costa County, California



	Feb '16	Mar '16	Apr '16	May '16	Jun '16	Jul '16	Aug '16	Sep '16	Oct '16	Nov '16	Dec '16	Jan '17	Feb '17
Avg Est Value	\$622K	\$678K	\$700K	\$745K	\$747K	\$734K	\$702K	\$729K	\$681K	\$709K	\$671K	\$661K	\$722K
Avg Sales Price	\$616K	\$666K	\$701K	\$716K	\$733K	\$718K	\$692K	\$676K	\$688K	\$703K	\$686K	\$667K	\$686K
Avg Sales Price as a % of Avg Est Value	99%	98%	100%	96%	98%	98%	99%	93%	101%	99%	102%	101%	95%

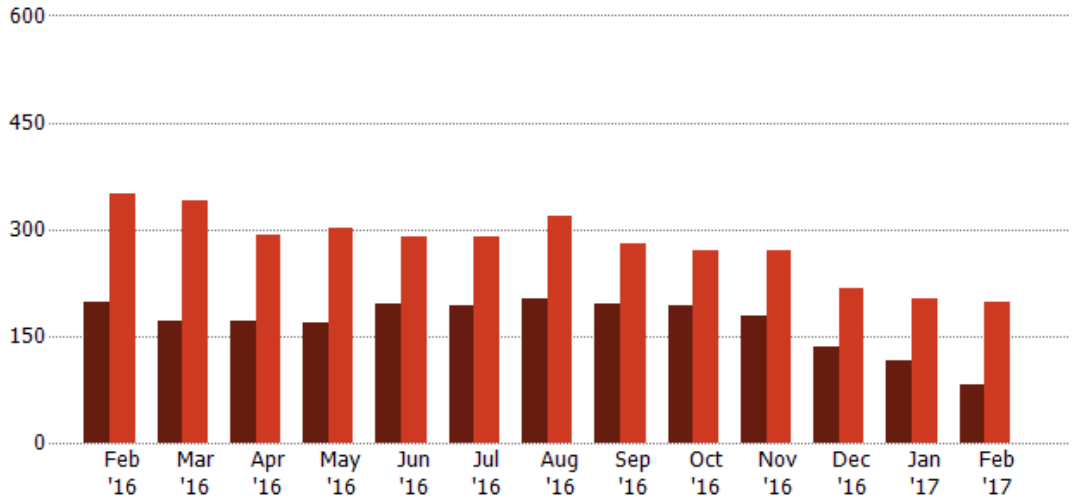
Distressed Listings

The number of distressed single-family, condominium and townhome properties that were for sale at the end of each month.

Filters Used

MLS: Contra Costa Association of REALTORS®, Bay East Association of REALTORS®, and EBRDi MLS
County: Alameda County, California, Contra Costa County, California

Month/Year	Count	% Chg.
Feb '17	82	-58.6%
Feb '16	198	-43.3%
Feb '15	349	46.1%



Current Year	198	172	171	169	195	192	202	195	192	178	134	115	82
Prior Year	349	339	291	301	289	290	318	279	270	271	216	202	198
Percent Change from Prior Year	-43%	-49%	-41%	-44%	-33%	-34%	-36%	-30%	-29%	-34%	-38%	-43%	-59%

Distressed Listings (By County)

The number of distressed single-family, condominium and townhome properties that were for sale at the end of the last month by county.

Filters Used: MLS: Contra Costa Association of REALTORS®, Bay East Association of REALTORS®, and EBRDi MLS; County: Alameda County, California, Contra Costa County, California



Appendix

The metrics that are calculated by RPR® may show the same general trends as those published by other sources (i.e. MLS, Associations or vendors), but because of our processes and parcel-centric approach, some variation may occur. Data sources include MLS's, where licensed, and public records for more in-depth metrics on distressed properties.

Report Details

Report Name: Monthly Market Data Report

Run Date: 03/08/2017

Scheduled: Yes

Report Date Range: From 2/2016 To: 2/2017

Information Included

- | | |
|--|--|
| <input checked="" type="checkbox"/> Include Cover Sheet | <input checked="" type="checkbox"/> Averages |
| <input type="checkbox"/> Include Key Metric Summary | <input checked="" type="checkbox"/> Include Appendix |
| <input checked="" type="checkbox"/> Include Metrics By: County | <input type="checkbox"/> Medians |

Listing Filters

Property Types: All

Sales Types: All

Price Range: None

Location Filters

State: All

County: Alameda County, California Contra Costa County, California

ZIP Code: All

Listing Activity Charts

- New Listings
- Active Listings
- Average Listing Price
- Average Listing Price per Sq Ft
- Average Listing Price vs Est Value
- Average Days in RPR
- Months of Inventory
- Absorption Rate

Sales Activity Charts

- Active/Pending/Sold
- New Pending Sales
- Pending Sales
- Closed Sales
- Average Sales Price
- Average Sales Price per Sq Ft
- Average Sales Price vs Listing Price
- Average Sales Price vs Est Value

Distressed Charts

- Distressed Listings
- Distressed Sales

Data Tables Using 2/2017 data

- Listing Activity by ZIP
- Listing Activity by Metro Area
- Sales Activity by ZIP
- Sales Activity by Metro Area